



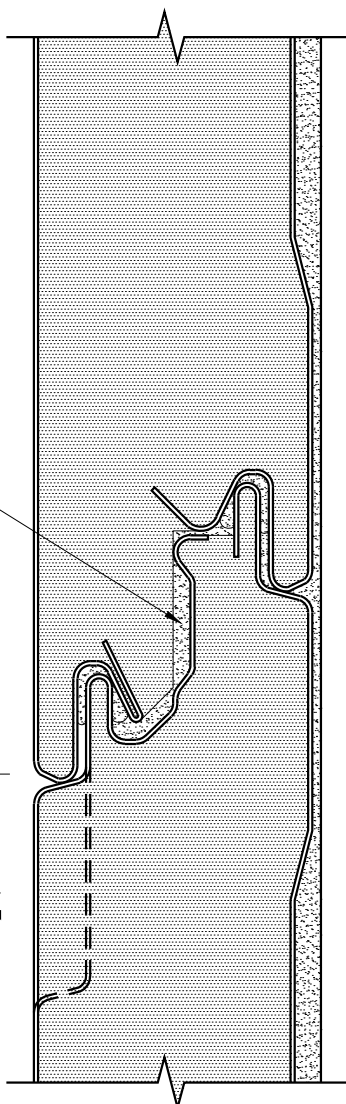
END-DAM SEALANT
URETHANE [7200UWH]



MODULE

REVEAL

1/4", 1/2", 3/4",
1", 1 1/2", 2",
2 1/2", 3"



REFER TO SHEET "CI-INFO" FOR ADDITIONAL INFORMATION REGARDING THE
APPLICATION OF SEALANTS, FASTENERS, AND CLOSURE MATERIALS.
CONSULT METL-SPAN TO DETERMINE ALLOWABLE LOAD AND SPACING OF ATTACHMENT FASTENERS.

COMMERCIAL AND
INDUSTRIAL

SIDE JOINT
END-DAM DETAIL

© 2016 Metl-Span, an NCI Building Systems company. All rights reserved.

2H-JT-02
DATE: Nov. 9, 2016