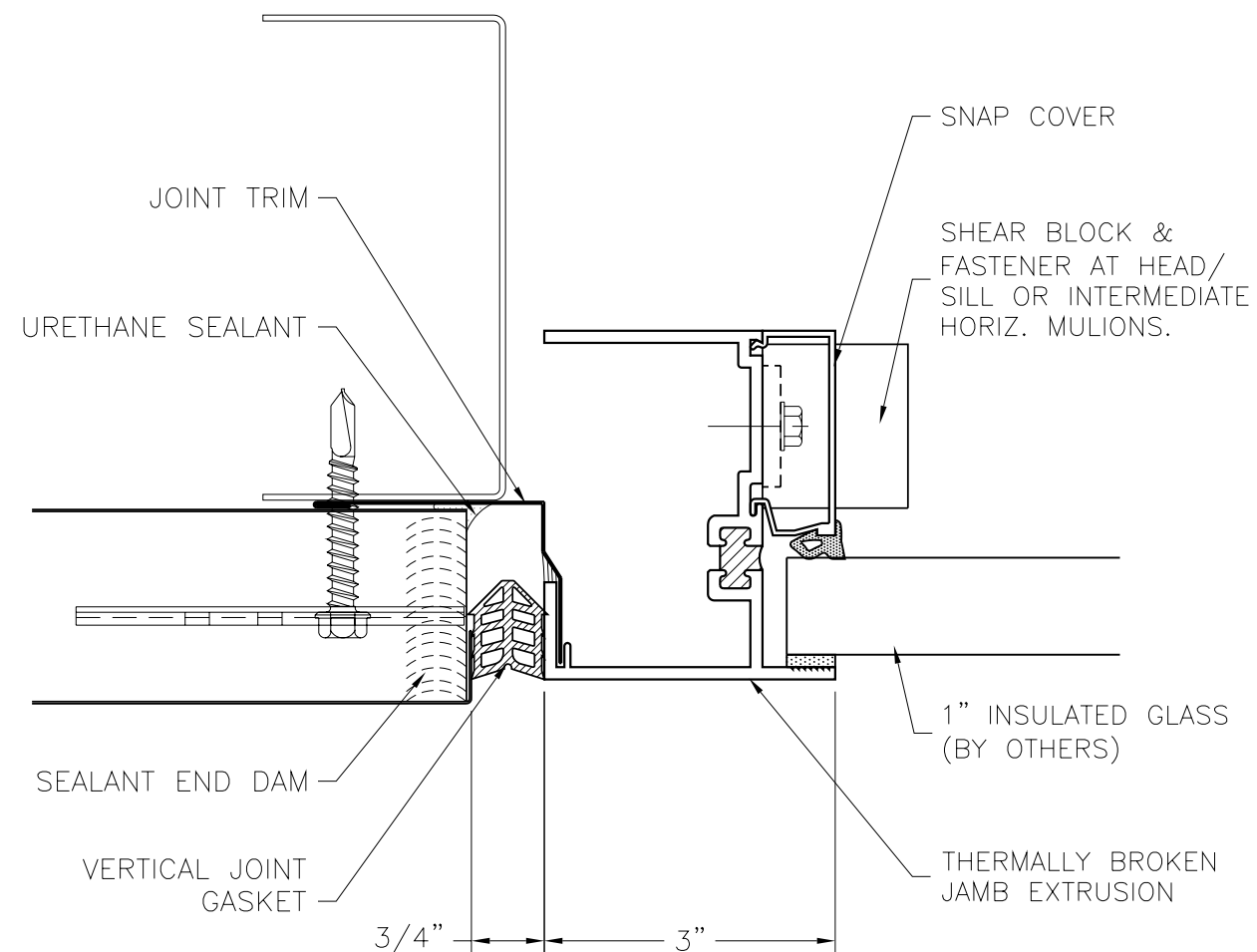


INTERMEDIATE HORIZ.  
MULLION FOR METL-VISION  
WINDOW

APPLICATION:  
COMMERCIAL & INDUSTRIAL

2-MV-03



REFER TO SHEET "CI-INFO" FOR ADDITIONAL INFORMATION, REGARDING THE APPLICATION OF SEALANTS, FASTENERS, AND CLOSURE MATERIALS.

CONSULT METL-SPAN TO DETERMINE ALLOWABLE LOAD AND SPACING OF ATTACHMENT FASTENERS

JAMB ATTACHMENT DETAIL  
FOR METL-VISION  
WINDOW

APPLICATION:  
COMMERCIAL & INDUSTRIAL

2-MV-04