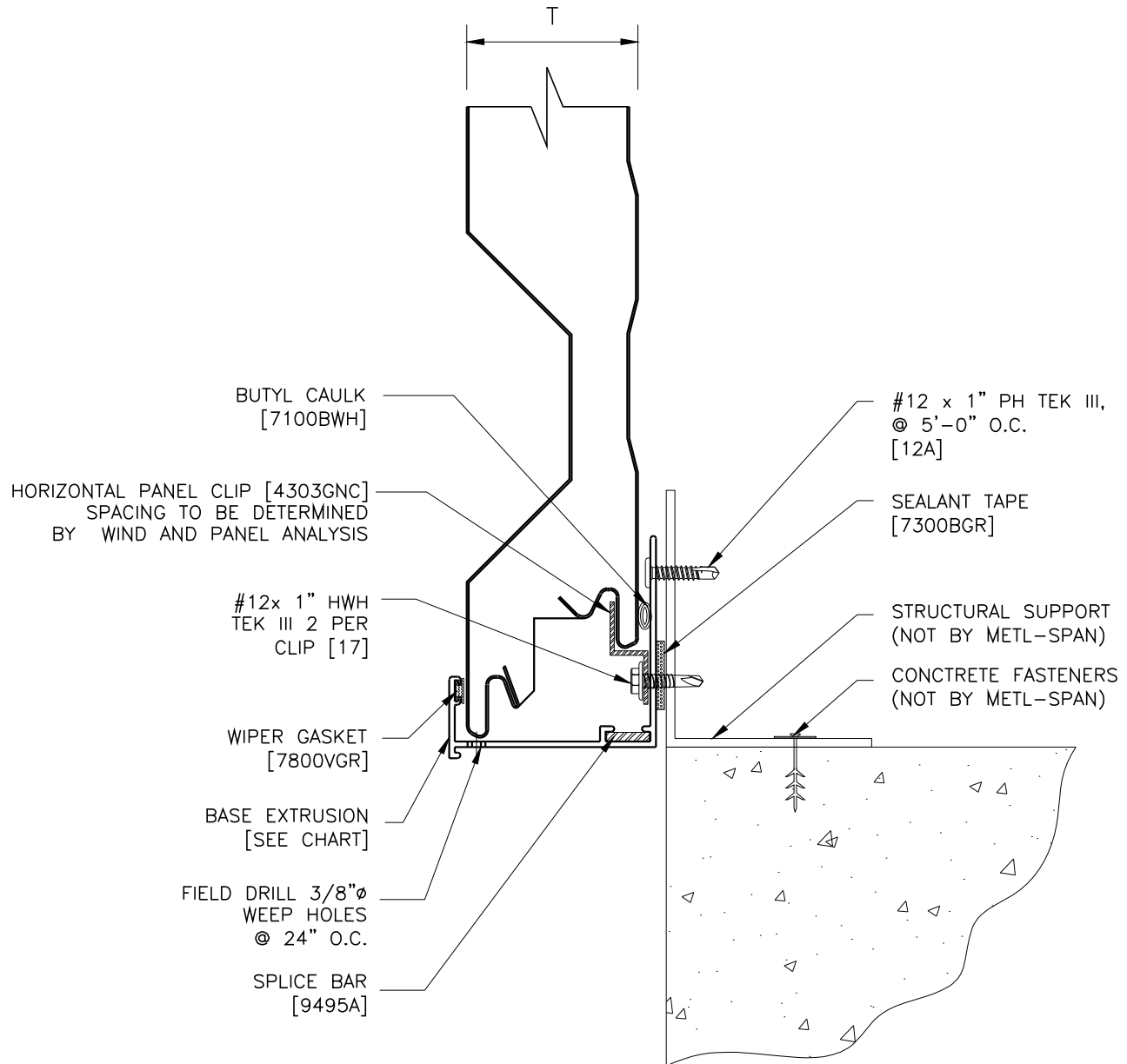


T = 3" & 4"



REFER TO SHEET "CI-INFO" FOR ADDITIONAL INFORMATION REGARDING THE APPLICATION OF SEALANTS, FASTENERS, AND CLOSURE MATERIALS. CONSULT METL-SPAN TO DETERMINE ALLOWABLE LOAD AND SPACING OF ATTACHMENT FASTENERS.

T	BASE/HEAD EXTRUSION
3"	9407ANC
4"	9404ANC

7.2 INSUL-RIB FLUSH
BASE DETAIL WITH EXTRUSION

HORIZONTAL APPLICATION:
COMMERCIAL & INDUSTRIAL

© 2016 Metl-Span, an NCI Building Systems company. All rights reserved.

7.2H-BE-03

DATE: Nov. 9, 2016