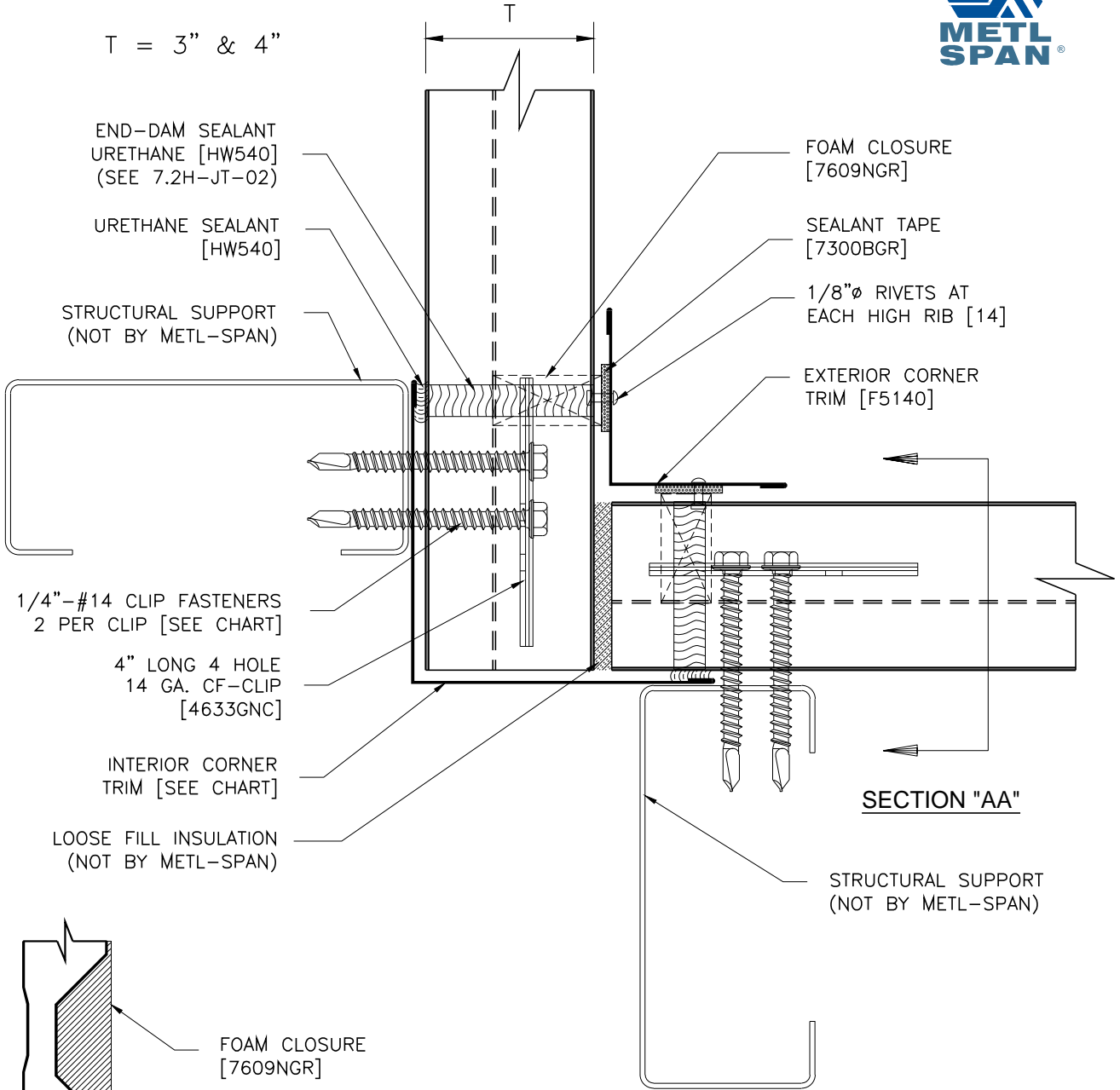


T = 3" & 4"



- END-DAM SEALANT URETHANE [HW540] (SEE 7.2H-JT-02)
- URETHANE SEALANT [HW540]
- STRUCTURAL SUPPORT (NOT BY METL-SPAN)
- 1/4"-#14 CLIP FASTENERS 2 PER CLIP [SEE CHART]
- 4" LONG 4 HOLE 14 GA. CF-CLIP [4633GNC]
- INTERIOR CORNER TRIM [SEE CHART]
- LOOSE FILL INSULATION (NOT BY METL-SPAN)

- FOAM CLOSURE [7609NGR]
- SEALANT TAPE [7300BGR]
- 1/8"Ø RIVETS AT EACH HIGH RIB [14]
- EXTERIOR CORNER TRIM [F5140]

SECTION "AA"

STRUCTURAL SUPPORT (NOT BY METL-SPAN)

REFER TO SHEET "CI-INFO" FOR ADDITIONAL INFORMATION REGARDING THE APPLICATION OF SEALANTS, FASTENERS, AND CLOSURE MATERIALS. CONSULT METL-SPAN TO DETERMINE LOWABLE LOAD AND SPACING OF ATTACHMENT FASTENERS.

SECTION "AA"

T	INTERIOR CORNER TRIM	TEK III CLIP FASTENER	TEK V CLIP FASTENER
3"	F5104	1624PNC	1732PNC
4"	F5101	1632PNC	1740PNC

7.2 INSUL-RIB INSIDE CORNER DETAIL WITH TRIM

HORIZONTAL APPLICATION: COMMERCIAL & INDUSTRIAL

7.2H-CE-02
DATE: Nov. 9, 2016