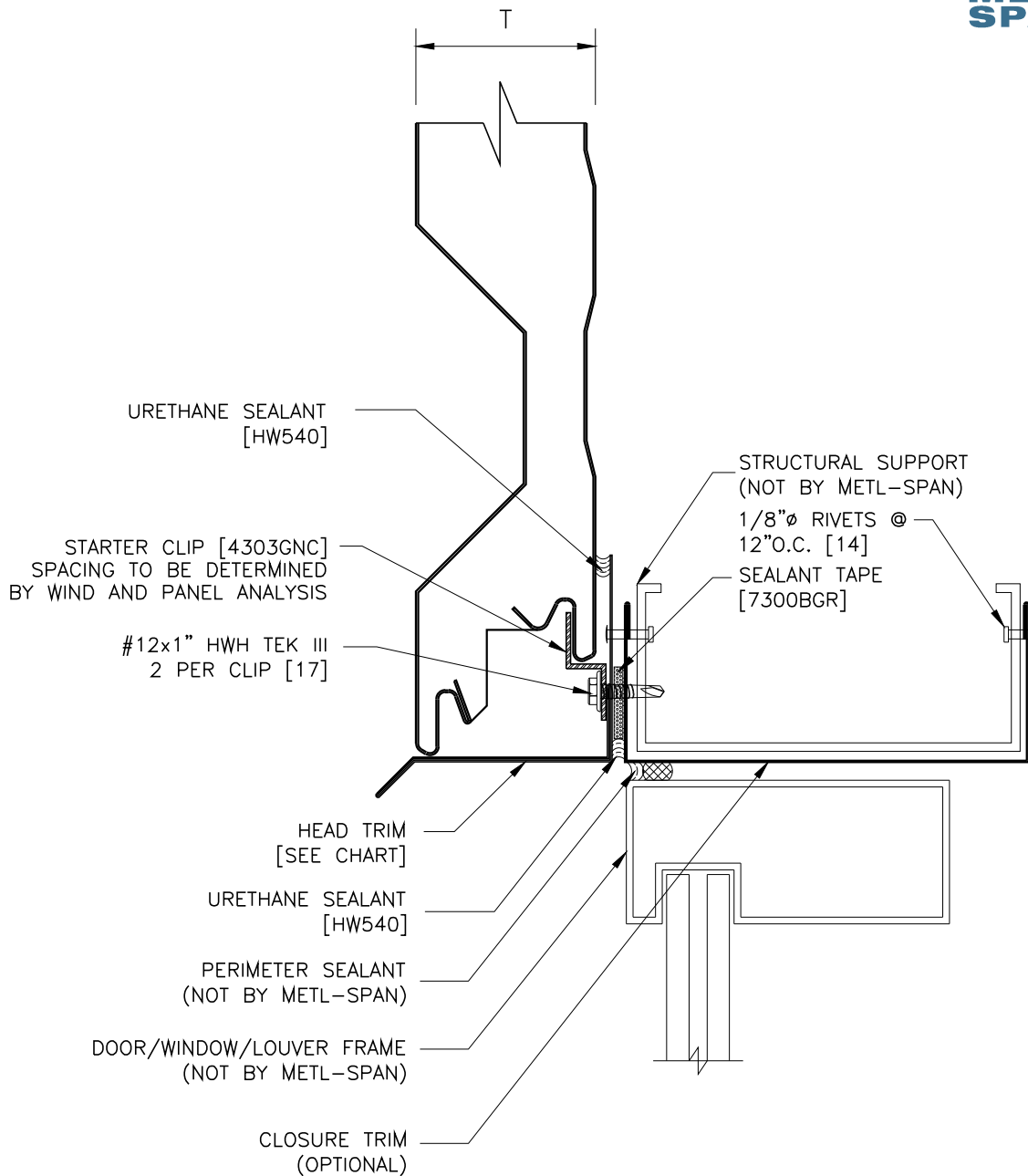


T = 3", 4", 5" & 6"



T	HEAD TRIM
3"	F3291
4"	F3293
5"	F3294
6"	F3295

REFER TO SHEET "CI-INFO" FOR ADDITIONAL INFORMATION REGARDING THE APPLICATION OF SEALANTS, FASTENERS, AND CLOSURE MATERIALS. CONSULT METL-SPAN TO DETERMINE ALLOWABLE LOAD AND SPACING OF ATTACHMENT FASTENERS.

**7.2 INSUL-RIB ON MODULE HEAD DETAIL WITH TRIM**

**HORIZONTAL APPLICATION:  
COMMERCIAL & INDUSTRIAL**

© 2016 Metl-Scan, an NCI Building Systems company. All rights reserved.

**7.2H-HD-01**

**DATE: Nov. 9, 2016**