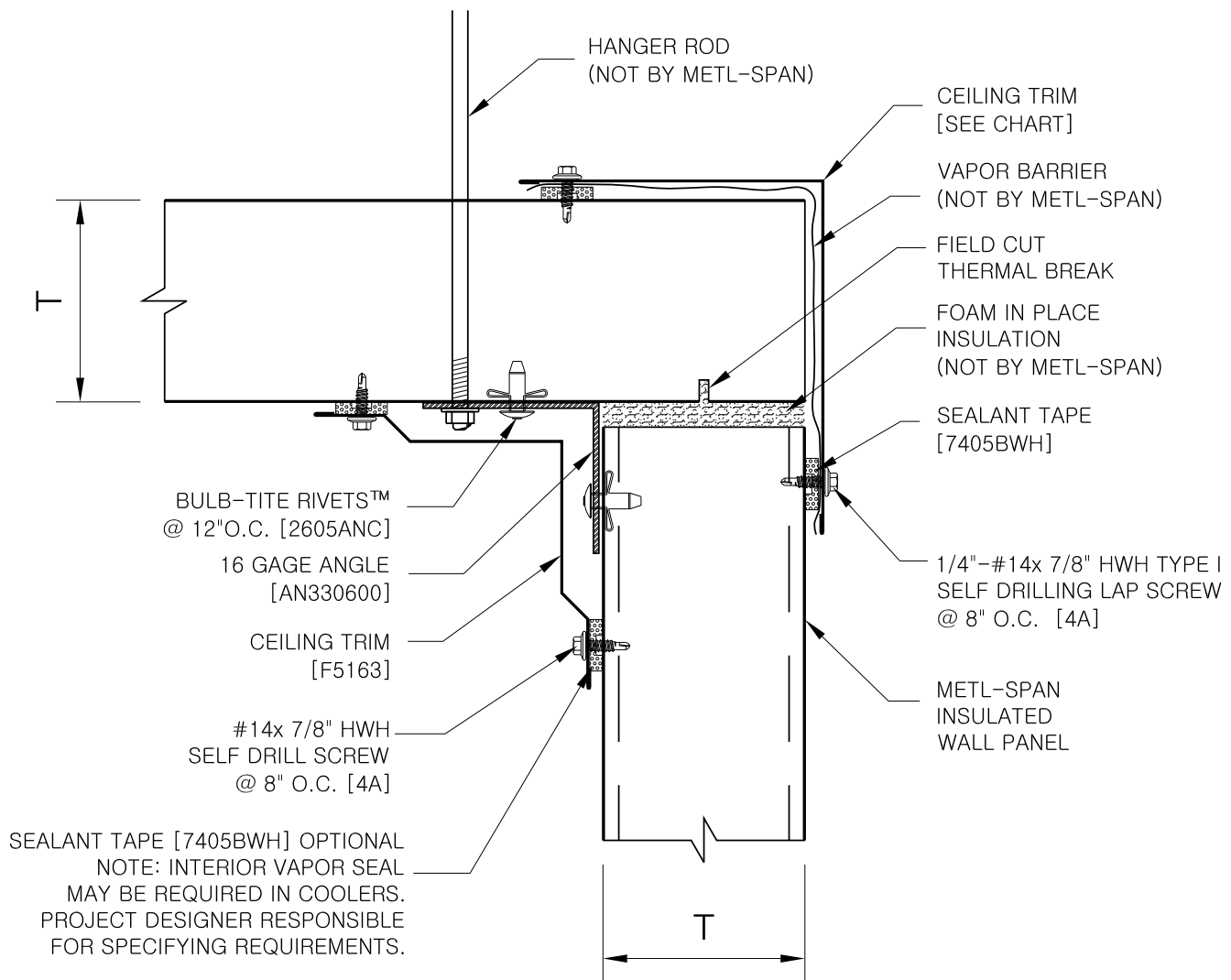


(SPACE ABOVE CEILING MUST BE VENTILATED.)



DEPENDING ON PANEL SPAN AND SUPPORT SYSTEM, 16 GA ANGLE MAY BE REQUIRED TO BE SUPPORTED BY ROOF STEEL, METHOD OF SUPPORT NOT BY METL-SPAN.

NOTE: BRACING OF ROD MAY BE REQUIRED. DESIGNED AND SUPPLIED BY OTHERS.

NOTE: ALL CEILING SUPPORT COMPONENTS AND PANELS MUST BE INSTALLED COMPLETE PRIOR TO ALLOWING ANY TRAFFIC ON CEILING.

NOTE: REFER TO SHEET "CS-INFO" FOR ADDITIONAL INFORMATION REGARDING THE APPLICATION OF SEALANTS, FASTENERS AND CLOSURE MATERIALS. CONSULT METL-SPAN TO DETERMINE ALLOWABLE LOAD AND SPACING OF ATTACHMENT.

T	CEILING TRIM
3"	F5104
4"	F5101
5"	F5124
6"	F5125

FREEZER OR COOLER

CEILING SUPPORT DETAIL

CS-CG-06

DATE: April 4, 2017