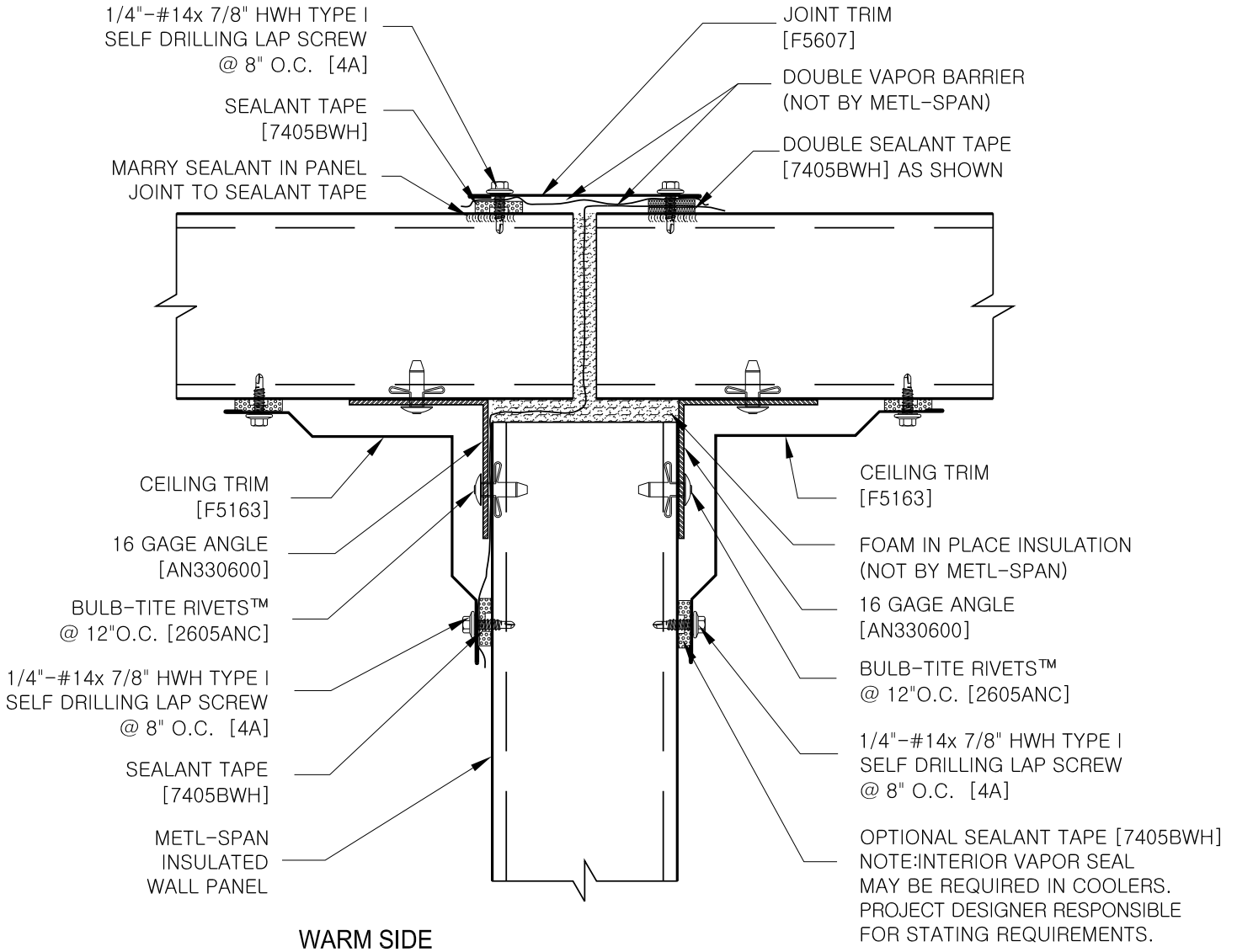




(SPACE ABOVE CEILING MUST BE VENTILATED.)



DEPENDING ON PANEL SPAN AND SUPPORT SYSTEM, 16 GA ANGLE MAY BE REQUIRED TO BE SUPPORTED BY ROOF STEEL, METHOD OF SUPPORT NOT BY METL-SPAN. PLEASE REFERENCE CS-CG-04

NOTE: BRACING OF ROD MAY BE REQUIRED. DESIGNED AND SUPPLIED BY OTHERS.

NOTE: ALL CEILING SUPPORT COMPONENTS AND PANELS MUST BE INSTALLED COMPLETE PRIOR TO ALLOWING ANY TRAFFIC ON CEILING.

NOTE: REFER TO SHEET "CS-INFO" FOR ADDITIONAL INFORMATION REGARDING THE APPLICATION OF SEALANTS, FASTENERS AND CLOSURE MATERIALS.

OPTIONAL SEALANT TAPE [7405BWH]  
NOTE: INTERIOR VAPOR SEAL MAY BE REQUIRED IN COOLERS. PROJECT DESIGNER RESPONSIBLE FOR STATING REQUIREMENTS.

<p><b>FREEZER OR COOLER</b></p>	<p><b>CEILING SUPPORT DETAIL</b></p> <p>© 2016 Metl-Scan, an NCI Building Systems company. All rights reserved.</p>	<p><b>CS-CG-07</b></p> <p>DATE: April 4, 2017</p>
---------------------------------	---	---