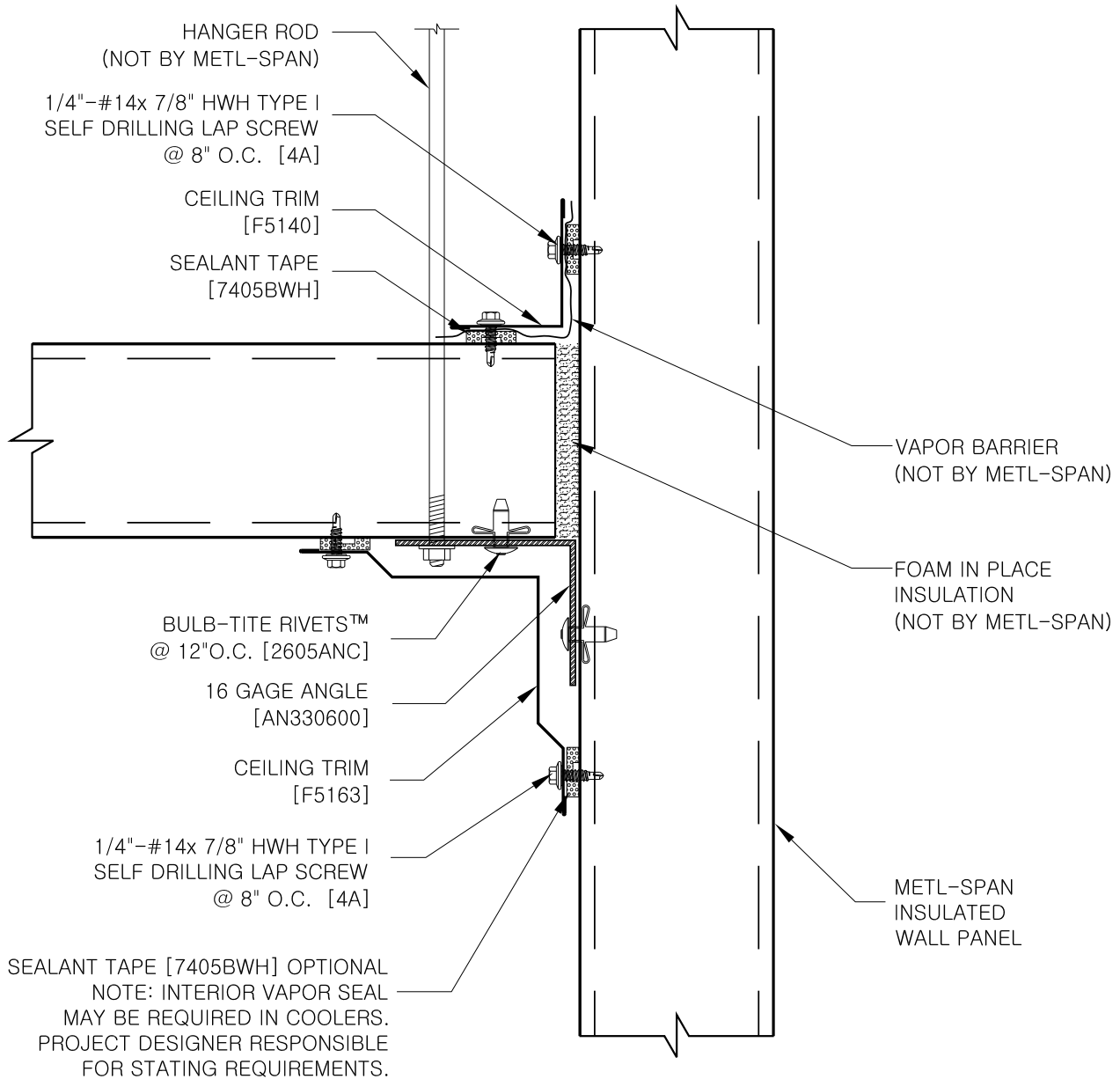


(SPACE ABOVE CEILING MUST BE VENTILATED.)



DEPENDING ON PANEL SPAN AND SUPPORT SYSTEM, 16 GA ANGLE
MAY BE REQUIRED TO BE SUPPORTED BY ROOF STEEL, METHOD
OF SUPPORT NOT BY METL-SPAN. PLEASE REFERENCE CS-CG-04
NOTE: ALL CEILING SUPPORT COMPONENTS AND PANELS MUST BE
INSTALLED COMPLETE PRIOR TO ALLOWING ANY TRAFFIC ON CEILING.

NOTE: REFER TO SHEET "CS-INFO" FOR ADDITIONAL INFORMATION
REGARDING THE APPLICATION OF SEALANTS, FASTENERS AND
CLOSURE MATERIALS.