



LISTING INFORMATION OF Metl-Span, LLC THERMALSAFE™ 4" Thick 1 Hour Fire Rated  
Wall Panels

SPEC ID: 29555

Metl-Span, A Division of NCI Group, Inc.  
1720 Lakepointe Drive, Suite 101  
Lewisville, TX 75057

This report is for the exclusive use of Intertek's Client and is provided pursuant to the agreement between Intertek and its Client. Intertek's responsibility and liability are limited to the terms and conditions of the agreement. Intertek assumes no liability to any party, other than to the Client in accordance with the agreement, for any loss, expense or damage occasioned by the use of this report. Only the Client is authorized to permit copying or distribution of this report and then only in its entirety. Any use of the Intertek name or one of its marks for the sale or advertisement of the tested material, product or service must first be approved in writing by Intertek. The observations and test results in this report are relevant only to the sample tested. This report by itself does not imply that the material, product, or service is or has ever been under an Intertek certification program.

**PRODUCT COVERED**

***THERMALSAFE™ Mineral Fiber Panels***

**PRODUCT DESCRIPTION**

The panels are fabricated by a continuous process at the Metl-Span Shelbyville, Indiana facility. THERMALSAFE™ panels are composite panel assemblies that sandwich a mineral fiber core between metal facers or “skins”. Panels are not fully encapsulated by the metal skin—the mineral fiber core is exposed around all edges. The mineral fiber core is adhered to the metal skins by a two-component polyurethane adhesive mixed with a wiping mechanism at the time of panel construction. See Appendix A for a cross-sectional view of a THERMALSAFE™ panel.

One edge has a square or “spline” groove cut into the mineral fiber core down the length of the panel. The opposite edge of the panel has a square shape protrusion or “spline tongue” extending from the mineral fiber core running down the length of the panel. This allows a tongue-and-groove fit of the mineral fiber cores between adjacent panels. The main connecting mechanism between two panels is a tongue-and-groove connection made at the edge of the panels by the metal skins. Panels are symmetric about their centerline.

**RATINGS**

Minimum Thickness: 4 inches  
 Nominal Density: 8.5 lb/ft<sup>3</sup> (pcf)

ASTM E 119-16, UL 263-11, CAN/ULC S101-07, NFPA 251-06

<b>Design No.</b>	<b>Rating</b>
MSN/IMWP 60-01	1 hour

<u>Attribute</u>	<u>Value</u>
Criteria	NFPA 251 (2006)
Criteria	CAN / ULC S101 (2007)
Criteria	ASTM E119 (2008a)
Criteria	ASTM E119 (2010b)
Criteria	UL 263 (2011)
Criteria	ASTM E119 (2015)
CSI Code	07 42 13 Metal Wall Panels

Fire Resistance	1 Hour Fire Rating
Intertek Services	Certification
Listed or Inspected	LISTED
Listing Section	WALL ASSEMBLIES
Report Number	16989-2, 3017560, 3086519, 3148793SAT-002B, G102549113
Spec ID	29555

# DRAWING INDEX

MSN/IMWP 60-01

# MSN/IMWP 60-01

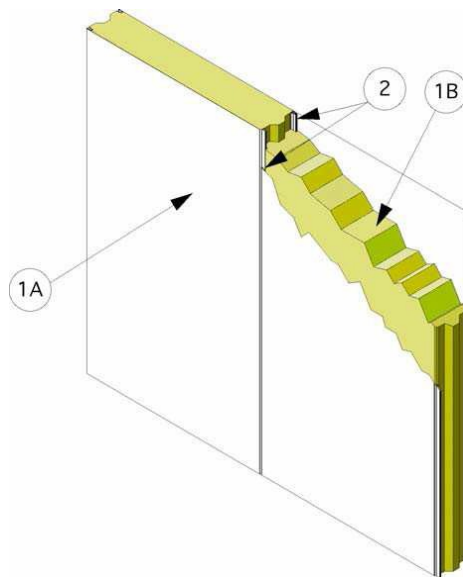
**Division 7 – Thermal and Moisture Protection**  
**07 42 00 Wall Panels**  
**07 42 13.19 Insulated Metal Wall Panels**

Page 1 of 2

---

**Metl-Span, A Division of NCI Group, Inc.**  
**Design Number MSN/IMWP 60-01**  
**Insulated Wall Panels**  
**Thermalsafe® Panels**  
**ASTM E119 (2016), UL 263 (2011), CAN/ULC-S101 (2007)**  
**Fire Resistance Rating: 1 Hour**

---



**1. CERTIFIED MANUFACTURER:** Metl-Span,  
 A Division of NCI Group, Inc.

**CERTIFIED PRODUCT:** Insulated Wall  
 Panels

**CERTIFIED MODEL:** Thermalsafe® Panels

Steel or stainless steel faced panels, with a core of mineral wool insulation. The panels are nominally 42 in. wide, having a max. length of 50 ft. and a min. thickness of 4 in. The panels are constructed with tongue and groove interfaces on the long dimension edges, which mate with adjacent panels. Panels may be installed with the long dimensions placed horizontally or vertically. When constructing a wall, the panel perimeter is secured with panel attachment angles or channel, as described in Item 3.

The wall panels are constructed of the following materials:

- A. **PANEL FACING** – The panel facing is constructed of min. 26 GA galvanized steel with painted or mill finish, or min. 26 GA stainless steel with mill finish. The panels are fashioned with tongue and groove mating edges located on the long dimension panel edges.
- B. **MINERAL WOOL INSULATION** – The panel core consists of nominal 8.5 pcf mineral wool batt that is sandwiched between the panel facing and adhered to the panel facing with a polyurethane adhesive. The long dimension edges of the panel core are constructed with a tongue and groove interface that mates with adjoining panels.

Date Revised: June 21, 2016  
 Project No. G102549113



Valued Quality. Delivered.

## MSN/IMWP 60-01 (page 2 of 2)

**Division 7 – Thermal and Moisture Protection**  
**07 42 00 Wall Panels**  
**07 42 13.19 Insulated Metal Wall Panels**

Page 2 of 2

- 2. SILICON SEALANT:** (Optional, Not Required for Fire Resistance) Install a nominal 3/16 in. bead of one-component, medium modulus, non-corrosive silicone sealant to the female side of the panel facing (Item 1A) joints prior to joining the panels.
- 3. PANEL SUPPORTS:** (Optional, Not Required for Fire Resistance) Panels are attached to side perimeter panel supports when installed horizontally, or top and bottom panel supports when installed vertically. Additionally, horizontally oriented wall panels will be supported on the bottom edge of the bottom panel with min. 18 GA steel channel that is secured to the foundation and engages the tongue and groove configuration of the panel edge. Secure the panel supports to the adjacent construction as required by Code. Any of the following methods of panel attachment is recognized in this Listing:
- A. **CHANNEL** – Min. 18 GA galvanized steel C-shaped channel or track, having a web width 1/8 in. larger than the wall thickness and min. flange length of 2 in. Secure panels to double supports with min. No. 12, self-drilling or self-tapping steel screws, having sufficient length to extend through the support flange and fully engage the panel face. Space the screws max. 12 in. on center (oc).
- B. **SINGLE SUPPORTS** – Min. 16 GA. steel sheeting angles having min. 2 in. flanges, or equivalent structural member providing equal or greater support. Secure panels to single supports with min. No. 14, self-drilling or self-tapping steel screws, with sufficient length to extend through the panel and completely into the steel support on the opposite side. Space the screws max. 18 in. oc and 3 in. from each joint.
- C. **DOUBLE SUPPORTS** – Min. 16 GA. steel sheeting angles having min. 2 in. flanges, or equivalent structural member providing equal or greater support. Secure panels to double supports with min. No. 12, self-drilling or self-tapping steel screws, having sufficient length to extend through the support flange and fully engage the panel face. Space the screws max. 12 in. oc.
- D. **INTERMEDIATE SUPPORTS** – (Optional, Not Required for Fire Resistance) Where panel walls require additional support for project specific reasons, intermediate steel supports may be installed, in accordance with manufacturer's instructions, on the panel span between the end panel support connections, using No. 14, self-drilling or self-tapping screws, having sufficient length to extend through the panel and completely into the steel support on the opposite side, or No. 10 FabLok rivets or 9/32 in. Bulb-Tite rivets installed through the support flange and fully engage the panel face. Spacing is determined by project requirements.

Date Revised: June 21, 2016  
Project No. G102549113



Valued Quality. Delivered.