



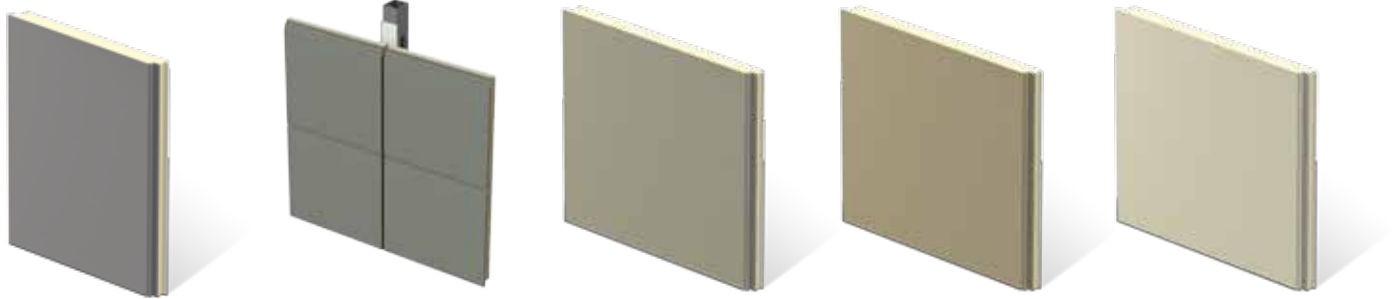
METL-SPAN DELIVERS HIGH-QUALITY, DURABLE AND ENERGY-EFFICIENT SOLUTIONS DESIGNED FOR UNPARALLELED PERFORMANCE TO STAND THE TEST OF TIME.

Metl-Span is a dynamic industry innovator dedicated to manufacturing and providing the highest quality insulated building panel products. Since our origination in 1968, we have been pioneers in research, design, production and sale of state-of-the-art insulated metal panels for institutional, commercial, industrial and cold storage buildings.

We are a championship team that creates great building solutions and achieves proven performance by delivering on our core values and demonstrating our key attributes. Metl-Span ensures you will remain on-time and on-budget with your building projects through our unmatched customer service. Because our employees understand your needs and are committed to your success, we provide you with the tools needed to incorporate our insulated panels into virtually any building design.

INSULATED METAL PANELS

FLAT WALL PANELS POLYURETHANE CORE



**CF ARCHITECTURAL
VERTICAL**

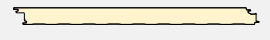
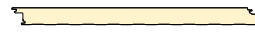
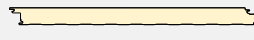
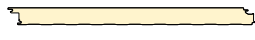
**CF ARCHITECTURAL
HORIZONTAL**

**CF TUFF-CAST™
PRECAST CONCRETE
FINISHED LOOK**

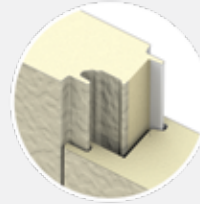
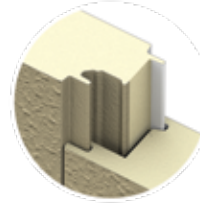
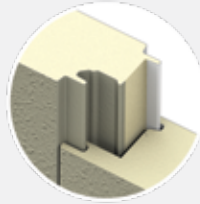
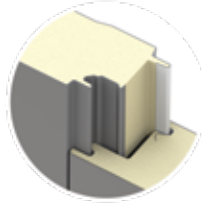
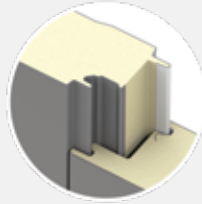
**CF TUFF WALL®
MASONRY LOOK
OF STUCCO**

CF SANTA FE®

**CROSS
SECTION**



**SIDE JOINT
DETAILS**



WIDTH

24", 30", 36"

24", 30", 36"

36", 42"

36", 42"

24", 30", 36", 42"

THICKNESS

2", 2½", 3", 4"

2", 2½", 3", 4"

2", 2½", 3", 4", 5", 6"

2", 2½", 3", 4", 5", 6"

2", 2½", 2¾", 3", 4"

LENGTH

8'-0" to 32'-0"
embossed

8'-0" to 32'-0"
embossed

8'-0" to 32'-0"
horizontal textured

8'-0" to 32'-0"
horizontal textured

8'-0" to 32'-0"
Santa Fe horizontal embossed

8'-0" to 16'-0"
unembossed

8'-0" to 16'-0"
unembossed

8'-0" to 40'-0"
vertical textured

8'-0" to 40'-0"
vertical textured

8'-0" to 40'-0"
Santa Fe vertical embossed

**75° CORE
MEAN TEMP
U-FACTOR
(BTU/h-ft²·°F)**

PANEL WIDTH: 36"

75°	
2"	0.0669
2½"	0.0500
3"	0.0400
4"	0.0307

PANEL WIDTH: 36"

75°	
2"	0.0669
2½"	0.0500
3"	0.0400
4"	0.0307

PANEL WIDTH: 42"

75°	
2"	0.0669
2½"	0.0500
3"	0.0400
4"	0.0307
5"	0.0264
6"	0.0224

PANEL WIDTH: 42"

75°	
2"	0.0669
2½"	0.0500
3"	0.0400
4"	0.0307
5"	0.0264
6"	0.0224

PANEL WIDTH: 42"

75°	
2"	0.0669
2½"	0.0500
2¾"	0.0450
3"	0.0400
4"	0.0307

**75° CORE
MEAN TEMP
R-VALUE
(h-ft²·°F/BTU)**

PANEL WIDTH: 36"

75°	
2"	14.95
2½"	20.00
3"	25.00
4"	32.57

PANEL WIDTH: 36"

75°	
2"	14.95
2½"	20.00
3"	25.00
4"	32.57

PANEL WIDTH: 42"

75°	
2"	14.95
2½"	20.00
3"	25.00
4"	32.57
5"	37.88
6"	44.64

PANEL WIDTH: 42"

75°	
2"	14.95
2½"	20.00
3"	25.00
4"	32.57
5"	37.88
6"	44.64

PANEL WIDTH: 42"

75°	
2"	14.95
2½"	20.00
2¾"	22.50
3"	25.00
4"	32.57

NOTES:

Based on ASTM C518, ASTM C1363 and thermal modeling, 75° F core mean temp. | *Available only from Nevada plant. | *Available only from Texas plant.
 °5" and 6" CF Tuff-Cast and Tuff Wall available with Mesa, nominal 1/8" deep profile only. | **No hourly rating available. | †Interior panels only. | Contact Metl-Span for custom length availability.

PROFILED WALL PANELS
POLYURETHANE CORE



CF 7.2 INSUL-RIB™



CF MESA



CF LIGHT MESA



CF FLUTE



CF STRIATED



Nominal 36"

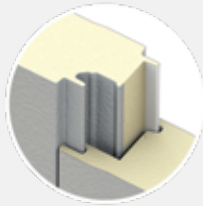
3", 4", 5", 6"
Thickness measured at height of rib
8'-0" to 36'-0"
horizontal embossed or unembossed
8'-0" to 40'-0"
vertical embossed or unembossed

PANEL WIDTH: 36"

	75°
3"	0.0814
4"	0.0537
5"	0.0395
6"	0.0314

PANEL WIDTH: 36"

	75°
3"	12.29
4"	18.62
5"	25.32
6"	31.85



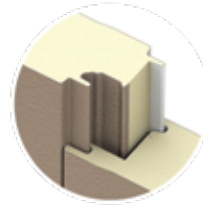
30", 36", 42"
2", 2½", 3", 4", 5", 6"
8'-0" to 32'-0"
horizontal embossed
8'-0" to 16'-0"
horizontal unembossed
8'-0" to 52'-0"
vertical embossed
8'-0" to 40'-0"
vertical unembossed

PANEL WIDTH: 42"

	75°
2"	0.0706
2½"	0.0516
2¾"	0.0470
3"	0.0424
4"	0.0324
5"	0.0264
6"	0.0224

PANEL WIDTH: 42"

	75°
2"	14.16
2½"	19.38
2¾"	21.28
3"	23.58
4"	30.86
5"	37.88
6"	44.64



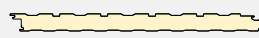
30", 36", 42"
2", 2½", 3", 4"
8'-0" to 32'-0"
horizontal embossed
8'-0" to 16'-0"
horizontal unembossed
8'-0" to 52'-0"
vertical embossed
8'-0" to 16'-0"
vertical unembossed

PANEL WIDTH: 42"

	75°
2"	0.0706
2½"	0.0516
2¾"	0.0470
3"	0.0424
4"	0.0324

PANEL WIDTH: 42"

	75°
2"	14.16
2½"	19.38
2¾"	21.28
3"	23.58
4"	30.86



42"
2", 2½", 2¾", 3", 4", 5", 6"
8'-0" to 32'-0"
horizontal embossed
8'-0" to 52'-0"
vertical embossed

PANEL WIDTH: 42"

	75°
2"	0.0721
2½"	0.0523
2¾"	0.0477
3"	0.0432
4"	0.0328
5"	0.0267
6"	0.0226

PANEL WIDTH: 42"

	75°
2"	13.87
2½"	19.12
2¾"	21.13
3"	23.15
4"	30.49
5"	37.45
6"	44.25



24**, 30", 36", 42"
2", 2½", 2¾", 3", 4"
8'-0" to 32'-0"
horizontal embossed
8'-0" to 16'-0"
horizontal unembossed
8'-0" to 40'-0"
24", 30" & 36" vertical embossed
8'-0" to 32'-0"
42" vertical embossed
8'-0" to 16'-0"
vertical unembossed

PANEL WIDTH: 42"

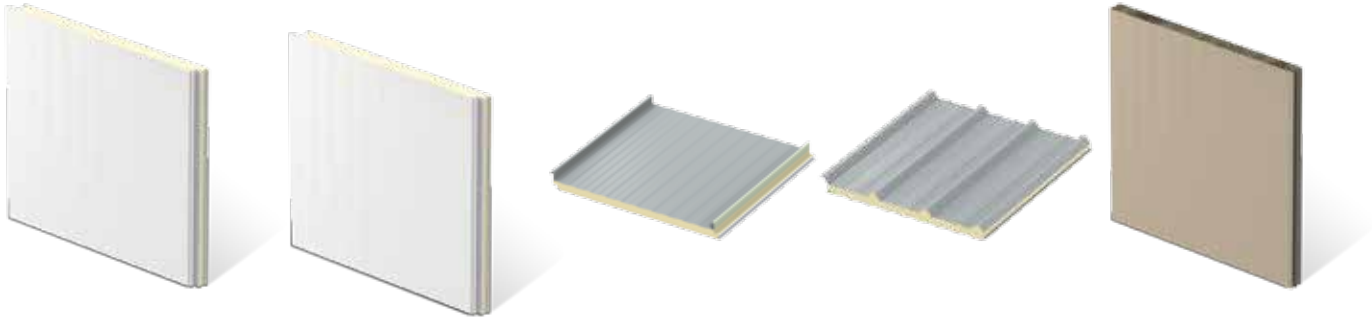
	75°
2"	0.0706
2½"	0.0516
2¾"	0.0470
3"	0.0424
4"	0.0324

PANEL WIDTH: 42"

	75°
2"	14.16
2½"	19.38
2¾"	21.28
3"	23.58
4"	30.86

SPECIALIZED PANELS
POLYURETHANE CORE

FIRE-RESISTANT PANEL
MINERAL WOOL CORE



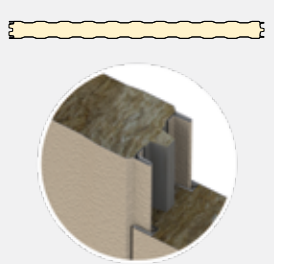
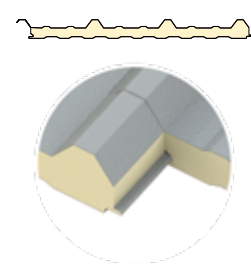
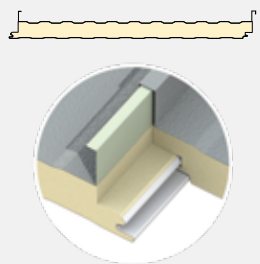
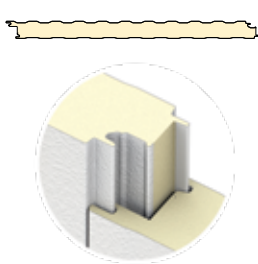
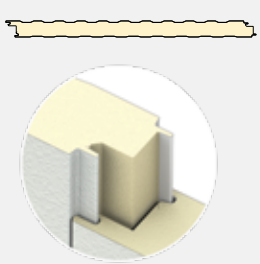
CF PARTITION
CF-45

HPCI BARRIER™

CFR INSULATED
METAL ROOF

LS-36™ INSULATED
METAL ROOF & WALL
EXPOSED FASTENERS

THERMALSAFE®



44½"
2", 2½", 2¾", 3", 4", 5", 6"
8'-0" to 52'-0"
vertical embossed
8'-0" to 40'-0"
vertical unembossed

42"
2", 2½", 3", 4", 5", 6"
8'-0" to 32'-0"
horizontal
8'-0" to 52'-0"
vertical

30", 36", 42"
2", 2½", 3", 4", 5", 6"
9'-6" to 53'-0"
embossed only

36"
1½", 2", 2½", 3", 4", 5", 6"
Rib height not included in thickness
8'-0" to 50'-0"

42"
Nominal 3***, 4", 5", 6", 7", 8"
8'-0" to 40'-0"
Variable by thickness
embossed only

PANEL WIDTH: 44 ½"

	75°
2"	0.0706
2½"	0.0516
2¾**	0.0470
3"	0.0424
4"	0.0324
5"	0.0264
6"	0.0224

PANEL WIDTH: 44 ½"

	75°
2"	14.16
2½"	19.38
2¾**	21.28
3"	23.58
4"	30.86
5"	37.88
6"	44.64

PANEL WIDTH: 42"

	75°
2"	0.0706
2½"	0.0516
2¾"	0.0470
3"	0.0424
4"	0.0324
5"	0.0264
6"	0.0224

PANEL WIDTH: 42"

	75°
2"	14.16
2½"	19.38
2¾"	21.28
3"	23.58
4"	30.86
5"	37.88
6"	44.64

PANEL WIDTH: 42"

	75°
2"	0.0600
2½"	0.0490
3"	0.0414
4"	0.0318
5"	0.0257
6"	0.0217

PANEL WIDTH: 42"

	75°
2"	16.67
2½"	20.41
3"	24.15
4"	31.45
5"	38.91
6"	46.08

PANEL WIDTH: 36"

	75°
1½"	0.0788
2"	0.0603
2½"	0.0492
3"	0.0416
4"	0.0327
5"	0.0267
6"	0.0223

PANEL WIDTH: 36"

	75°
1½"	12.69
2"	16.58
2½"	20.33
3"	24.04
4"	30.58
5"	37.45
6"	44.84

PANEL WIDTH: 42"

	75°
3"	0.0856
4"	0.0654
5"	0.0529
6"	0.0444
7"	0.0383
8"	0.0336

PANEL WIDTH: 42"

	75°
3"	11.68
4"	15.29
5"	18.90
6"	22.51
7"	26.12
8"	29.73