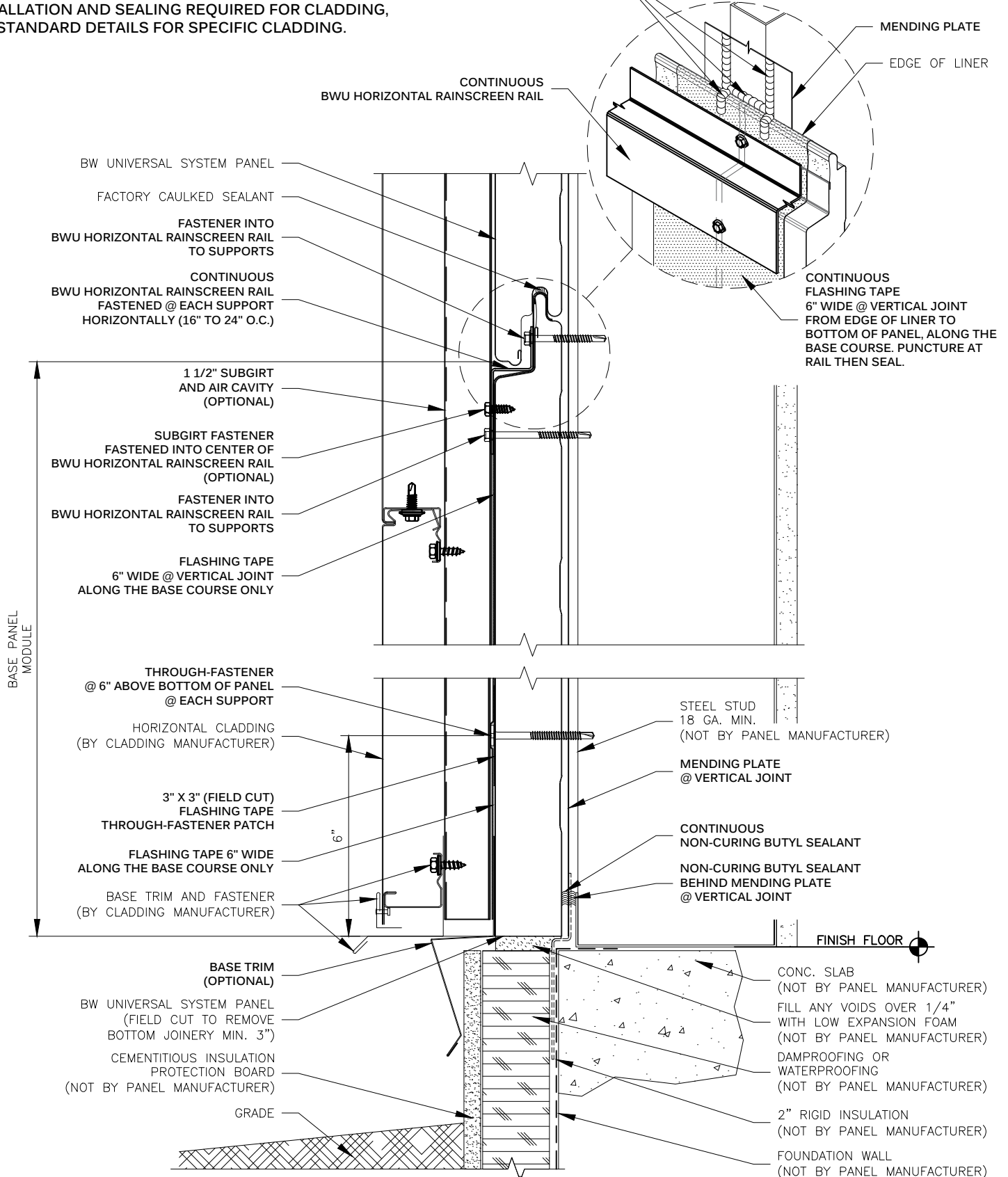




**METL SPAN®**  
INSULATED METAL PANELS

**NOTE:**  
THESE DETAILS ARE FOR INSTALLATION AND SEALING OF BW UNIVERSAL SYSTEM PANELS ONLY. FOR INSTALLATION AND SEALING REQUIRED FOR CLADDING, SEE STANDARD DETAILS FOR SPECIFIC CLADDING.

APPLY CONTINUOUS NON-CURING BUTYL SEALANT W/MARRIAGE BEAD TO PANEL JOINT SEALANT



**HORIZONTAL RAINSCREEN RAIL  
BASE AT FOUNDATION @ VERTICAL JOINT  
BW UNIVERSAL SYSTEM™**

DRAWING NO:  
**BWU-HRAIL-BE-01A**

DATE: Feb '20

REV: 00