

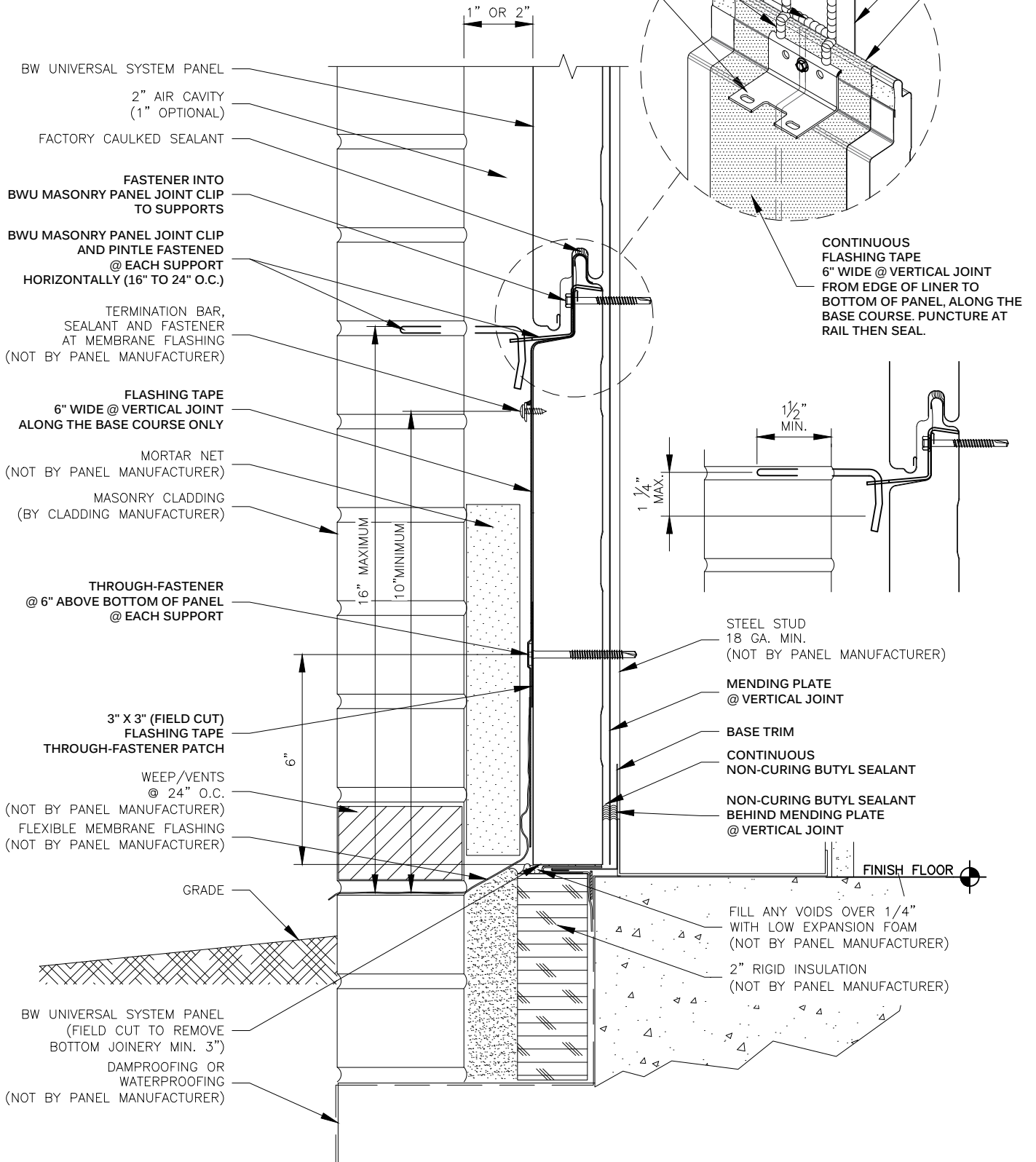


METL SPAN
INSULATED METAL PANELS

NOTE:
THESE DETAILS ARE FOR INSTALLATION AND SEALING OF BW UNIVERSAL SYSTEM PANELS ONLY. FOR INSTALLATION AND SEALING REQUIRED FOR CLADDING, SEE STANDARD DETAILS FOR SPECIFIC CLADDING.

APPLY CONTINUOUS NON-CURING BUTYL SEALANT W/MARRIAGE BEAD TO PANEL JOINT SEALANT
MASONRY PANEL JOINT CLIP

MENDING PLATE
EDGE OF LINER



**MASONRY PANEL JOINT CLIP
BASE @ VERTICAL JOINT
BW UNIVERSAL SYSTEM™**

DRAWING NO: BWU-MAS-BE-01	
DATE: Feb '20	REV: 00