

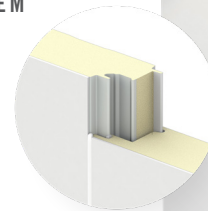


FRP CLEANSEAM™

INSULATED METAL WALL PANEL

The FRP CleanSeam™ insulated metal panel is designed to create a virtually seamless joint between wall panels to prevent water intrusion and bacterial growth. This panel is a perfect solution for commissaries, processing rooms, clean rooms or pharmaceutical manufacturing facilities where frequent wash downs may occur. The reduced maintenance seal system creates a durable bond—unlike silicone sealants, which can deteriorate under frequent cleanings.

LOCK & GROOVE SYSTEM



PANEL



PANEL PROFILE



PRODUCT SPECIFICATIONS

WIDTH • 42", 44.4"

THICKNESS • 2", 3", 4", 5", 6"

LENGTH • 8'-0" to 20'-0"

FRP FACE PROFILE • No profile, 0.075" thick, Class A, unembossed FRP

NON FRP FACE PROFILE • Mesa, nominal 1/8" deep, embossed or Light Mesa, nominal 1/16" deep, embossed

SUBSTRATE • G-90 galvanized or AZ-50 aluminum-zinc coated steel or 304 or 316 stainless steel in 26, 24 and 22[^] Ga.

FINISH OPTION • Non-FRP faces available with USDA-compliant polyester coating, igloo white color

CLEANSEAM SEALANT • Two-part compound which seals the panel surfaces for a smooth, durable finish—virtually impervious seal to prevent water penetration

CORE • Foamed-in-place, zero ozone depleting (zero ODP) Class 1 foam

THERMAL VALUE • k-Factor* @ 75° F (24° C) is 0.140, @ 40° F (4.4° C) is 0.126

u-factor** (BTU/h-ft²·°F)

PANEL WIDTH: 42"

	75°
2"	0.0706
3"	0.0424
4"	0.0324
5"	0.0264
6"	0.0224

PANEL WIDTH: 42"

	40°
2"	0.0669
3"	0.0491
4"	0.0401
5"	0.0248
6"	0.0210

R-value** (h-ft²·°F/BTU)

PANEL WIDTH: 42"

	75°
2"	14.16
3"	23.58
4"	30.86
5"	37.88
6"	44.64

PANEL WIDTH: 42"

	40°
2"	14.95
3"	20.37
4"	24.94
5"	32.79
6"	47.62

*k-Factor calculations: BTU in/ft²·hr. °F

** Based on ASTM C518 and ASTM C1363

[^]22 Ga not available for stainless steel

DESIGN FEATURES & BENEFITS

- Seamless FRP wall system
- Superior hygiene
- Durable finish
- Meets USDA and FSIS requirements
- Withstands aggressive wash-downs
- Prevents moisture intrusion
- Reduced maintenance requirements

Metl-Span: All-In-One Performance
1720 Lakepointe Drive, Suite 101, Lewisville, Texas 75057 (p) 877.585.9969 (w) metlspan.com

©2020 Metl-Span®, part of the Cornerstone Building Brands family. All rights reserved. Printed in the U.S.A.

PART# CSDS0220

TESTING: FRP CLEANSEAM™ INSULATED METAL PANEL

TEST/APPROVAL	TEST METHOD	TEST TITLE	RESULTS
Fire US	ASTM E84	Surface Burning Characteristics of Building Materials	Flame spread <25, smoke developed <450 Class A materials
	NFPA 286	Fire Tests for Evaluating Contribution of Wall and Ceiling Finish to Roof Fire Growth	Test specimen met the criteria of IBC Section 803.11
Fire Canada	CAN/ULC S102	Surface Burning Characteristics of Building Materials and Assemblies	Meets the National Building Code of Canada requirements
	CAN/ULC S138	Fire Growth of Insulated Building Panels in a Full-Scale Room Configuration	Meets the National Building Code of Canada requirements
Structural	ASTM E72	Strength Tests of Panels for Building Construction	See Load Chart
Thermal Performance	ASTM C518	Steady-State Thermal Transmission Properties by Means of the Heat-Flow Meter Apparatus	K-Factor of 0.126 BTU.in/hr.ft ² .°F at 40° F mean core K-Factor of 0.14 BTU.in/hr.ft ² .°F at 75° F mean core

Descriptions and specifications contained herein were in effect at the time this publication was approved for printing. In a continuing effort to refine and improve products, Metl-Span reserves the right to discontinue products at any time or change specifications and/or designs without incurring obligation. To ensure you have the latest information available, please inquire or visit our website at metlspan.com.