

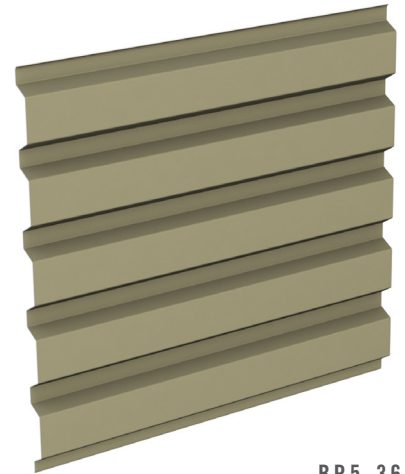
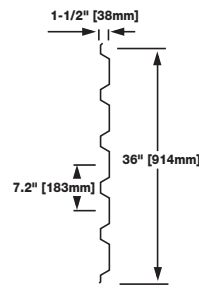


EXPOSED FASTENER

BR5-36 SINGLE-SKIN WALL PANEL

All Exposed Fastener metal wall panels may be installed in a variety of rainscreen applications to form a complete wall system. Systems may vary from an uninsulated screen wall to BW Systems, an insulated composite backup panel system with Advanced Thermal and Moisture Protection (ATMP®).

Exposed fastener metal panels are available in a variety of rib heights, rib spacings, panel widths and slopes. BR5-36 is a sturdy panel with 36" coverage, and uniformly spaced ribs at 7.2" o.c. As a wall panel BR5-36 laps in the low cell.



BR5-36

PRODUCT SPECIFICATIONS

WIDTH • 36"

HEIGHT • 1 1/2"

LENGTH • 5'-0" to 40'-0"

EXTERIOR PROFILE • 1 1/2" rib height on center with staggered patterns

EXTERIOR FACE • G90 galvanized steel 24, 22, 20, and 18 Ga. in unembossed or non-directional embossed (18 Ga. not available)

JOINT • Overlapping

FASTENING • Exposed Through Fasteners

COLORS • Standard I, Standard II, Premium I, and Premium II color options

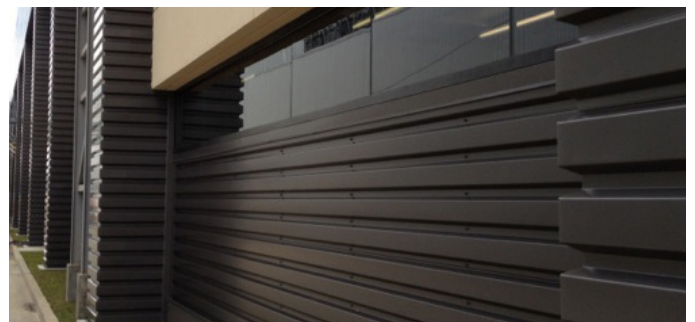
BR5-36 SINGLE-SKIN WALL PANEL

DESIGN FEATURES & BENEFITS

- Extremely versatile panels can be used as exterior or interior walls
- All-weather installation capability, installation time is shortened, permitting fast-track scheduling
- May be used with a variety of insulated or non-insulated back-up systems in a wide range of designs and colors
- Ribs can be run either horizontally or vertically curved to extreme degrees
- Exceptional negative wind load properties
- Excellent option for both new construction and retrofit projects
- Panels are available in embossed or unembossed finishes

TESTING: BR5-36

TEST/APPROVAL	TEST METHOD	TEST TITLE	RESULTS
Acoustical	ASTM E90/E413	Sound transmission	STC = 33-55 when assembled with mineral wool insulation and perforated liner panel.
	ASTM C423/E795	Noise reduction	NRC = 0.75-1.05 when assembled with mineral wool insulation and perforated liner panel.
Environmental		Air leakage	BR5-36 is intended to be used only as a rainscreen; an approved air/water barrier must be installed behind the product to comply with code requirements.
		Water penetration	
Structural		Impact resistance	Approved for non-HVHZ only; see FL1754.
	See load-span tables.	Wind loads	See load-span tables.



Descriptions and specifications contained herein were in effect at the time this publication was approved for printing. In a continuing effort to refine and improve products, Metl-Span reserves the right to discontinue products at any time or change specifications and/or designs without incurring obligation. To ensure you have the latest information available, please inquire or visit our website at metlspan.com.