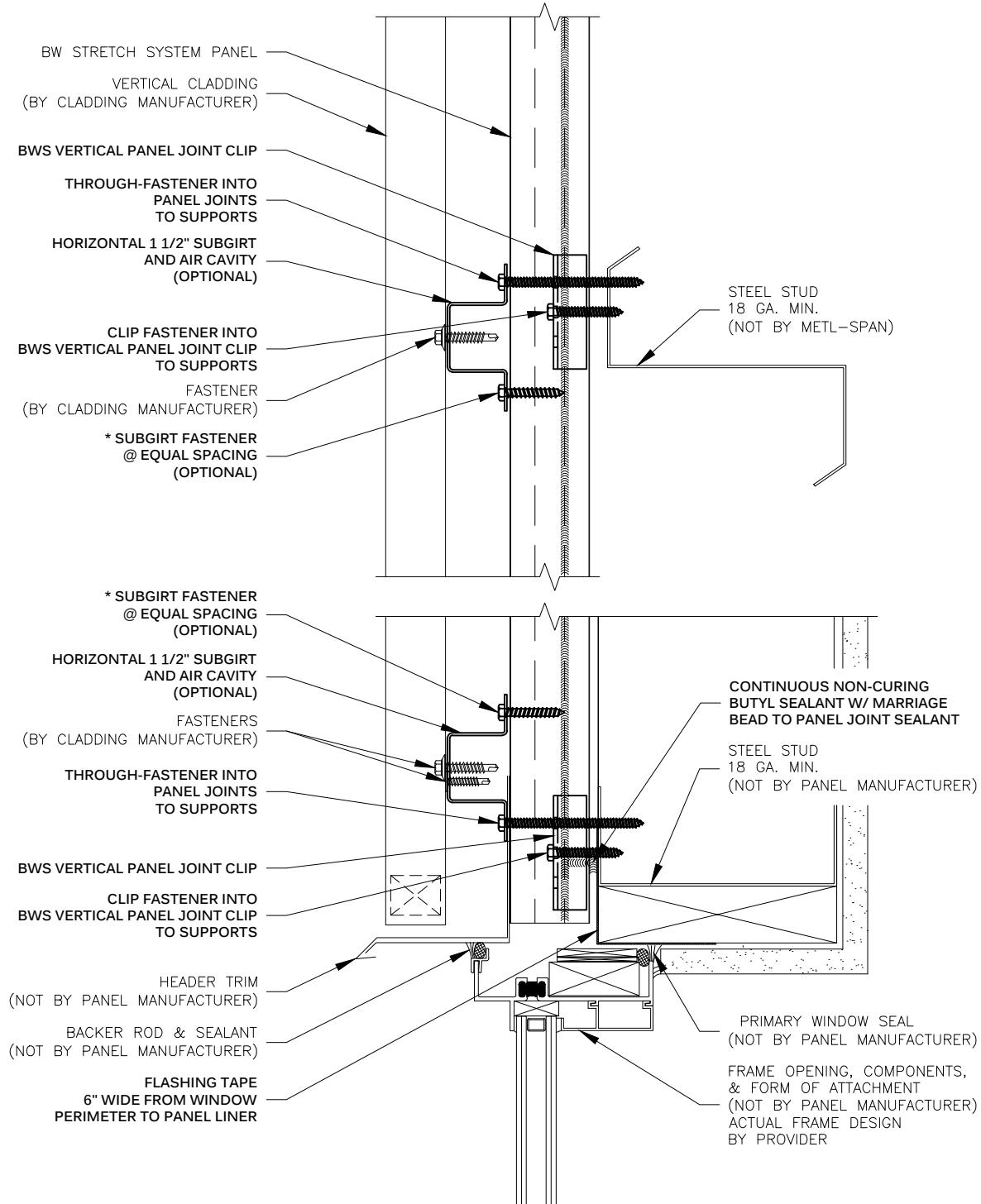




METL-SPAN®
INSULATED METAL PANELS

OF BW UNIVERSAL SYSTEM PANELS ONLY. FOR
INSTALLATION AND SEALING REQUIRED FOR CLADDING,
SEE STANDARD DETAILS FOR SPECIFIC CLADDING.

EQUAL SPACINGS TO BE 12" MIN./24" MAX. FINAL
SPACINGS PER WIND LOAD REQUIREMENTS. CONTACT
METL-SPAN'S ENGINEERING DEPARTMENT.



**VERTICAL PANEL JOINT CLIP
HEADER - w/ HORIZONTAL SUBGIRT
BW STRETCH SYSTEM™**

DRAWING NO:

BWS-VPJC-HS-HD-01

DATE:

Mar '20

REV:

00