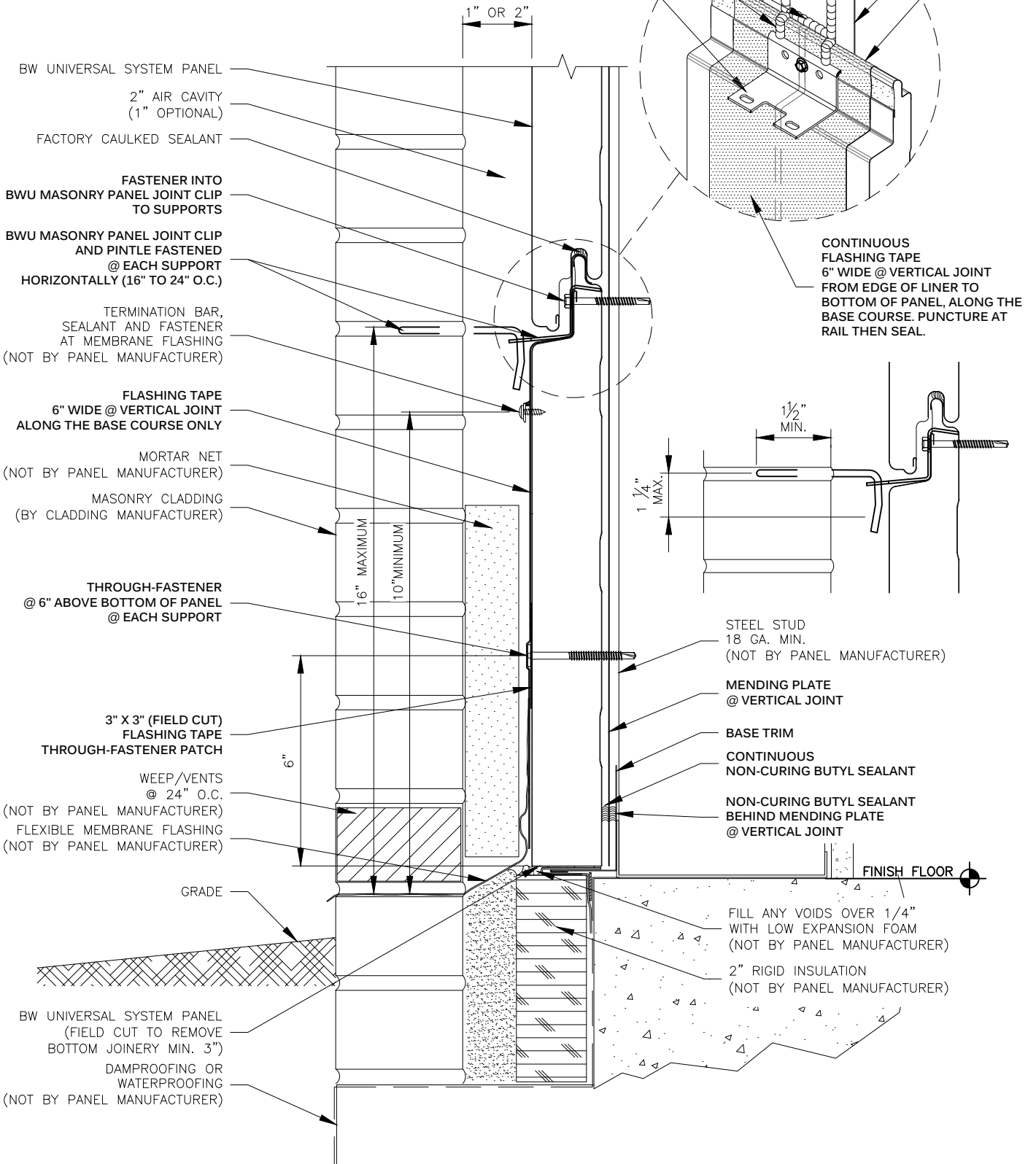




**METL SPAN**  
INSULATED METAL PANELS

**NOTE:**  
THESE DETAILS ARE FOR INSTALLATION AND SEALING OF BW UNIVERSAL SYSTEM PANELS ONLY. FOR INSTALLATION AND SEALING REQUIRED FOR CLADDING, SEE STANDARD DETAILS FOR SPECIFIC CLADDING.

APPLY CONTINUOUS NON-CURING BUTYL SEALANT W/MARRIAGE BEAD TO PANEL JOINT SEALANT  
MASONRY PANEL JOINT CLIP



**MASONRY PANEL JOINT CLIP  
BASE @ VERTICAL JOINT  
BW UNIVERSAL SYSTEM™**

|                                     |                   |
|-------------------------------------|-------------------|
| DRAWING NO:<br><b>BWU-MAS-BE-01</b> |                   |
| DATE:<br><b>Feb '20</b>             | REV:<br><b>00</b> |