

CONCEPT SERIES - HORIZONTAL

APPLICATION

SINGLE SKINE WALL PANEL

APPLICATION:
ARCHITECTURAL

COVER

DRAWING NO:

DATE:

JUN '21

REV:

00

INDEX:

PAGE

3	HEAD OPENING
4-5	BASE AT SLAB
6	JAMB OPENING
7	BASE AT CURB
8	VERTICAL JOINT

APPLICATION:
ARCHITECTURAL

INDEX SHEET

DRAWING NO.

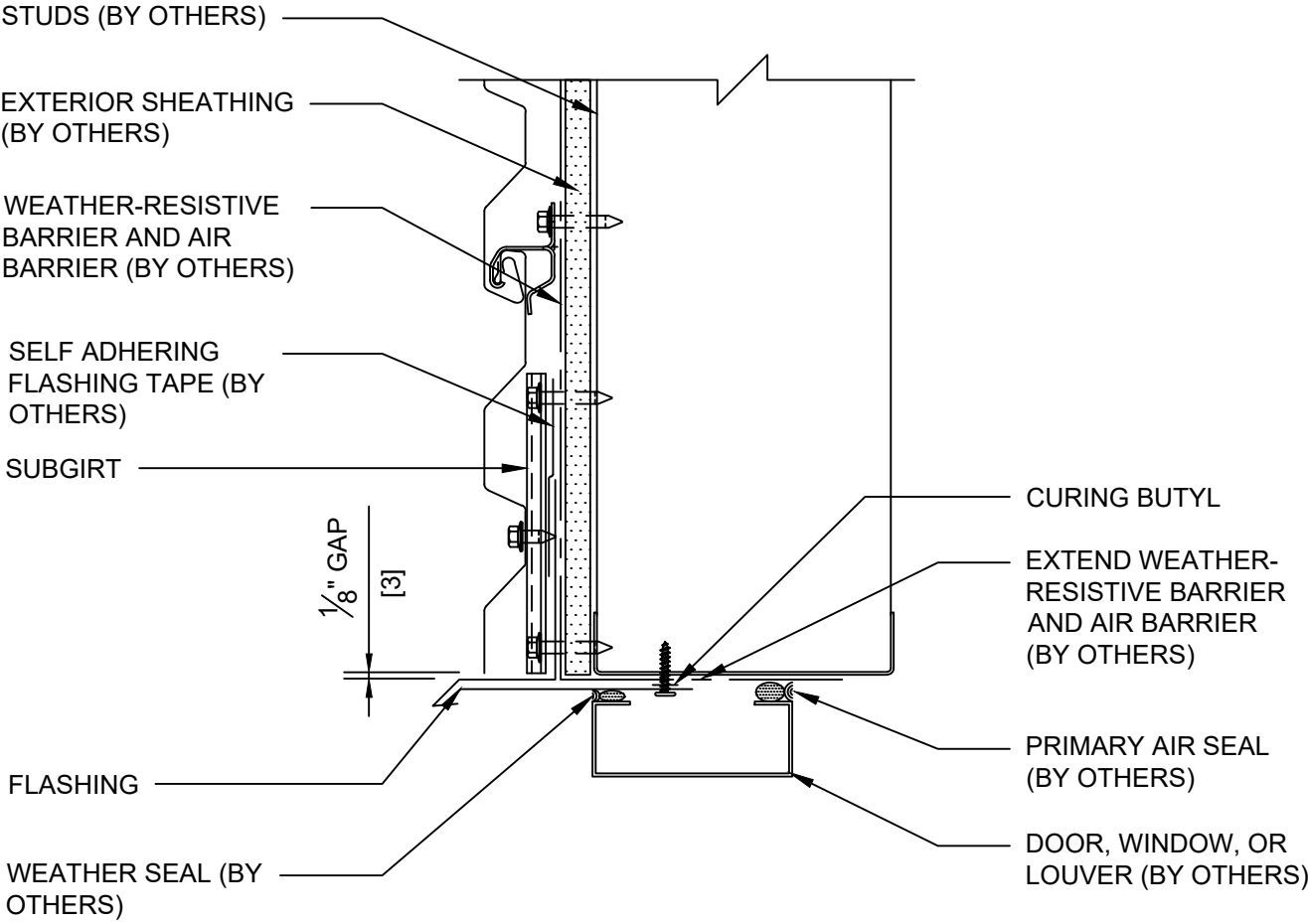
CS-INDEX-01

DATE

JUN '21

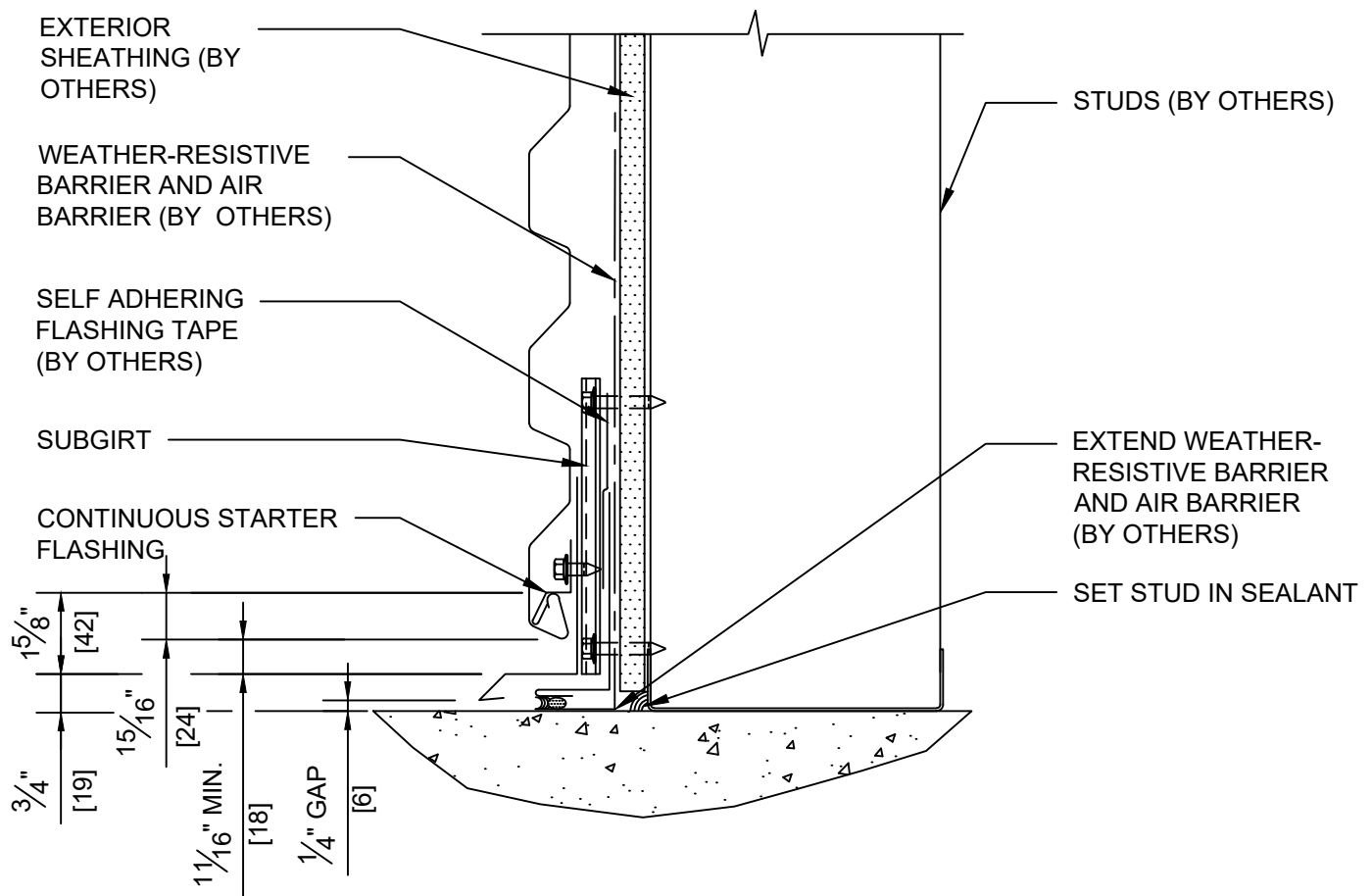
ISSUE

1 00



DETAIL 4
HEAD OPENING

*DETAILS SHOWN ARE FOR PROMOTIONAL USE ONLY. THESE DETAILS SHOULD NOT FOR ANY REASON BE USED FOR CONSTRUCTION PURPOSES.



DETAIL 3
BASE @ SLAB

*DETAILS SHOWN ARE FOR PROMOTIONAL USE ONLY.
THESE DETAILS SHOULD NOT FOR ANY REASON BE
USED FOR CONSTRUCTION PURPOSES.

DRAWING NO:

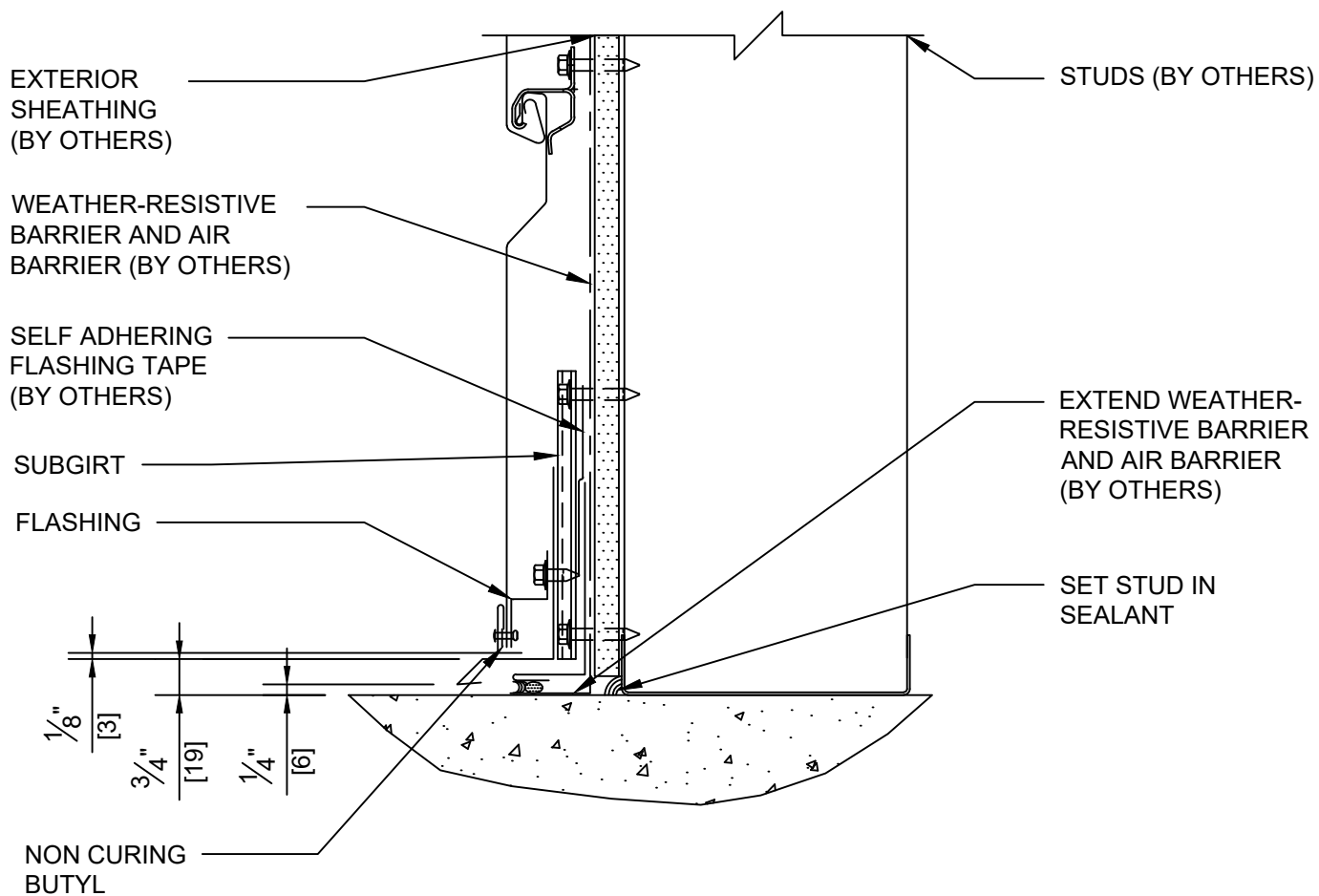
XX

DATE:

OCT20

REV:

0



DETAIL 3A
 BASE @ SLAB (ALTERNATE)

*DETAILS SHOWN ARE FOR PROMOTIONAL USE ONLY.
 THESE DETAILS SHOULD NOT FOR ANY REASON BE
 USED FOR CONSTRUCTION PURPOSES.

DRAWING NO:

XX

DATE:

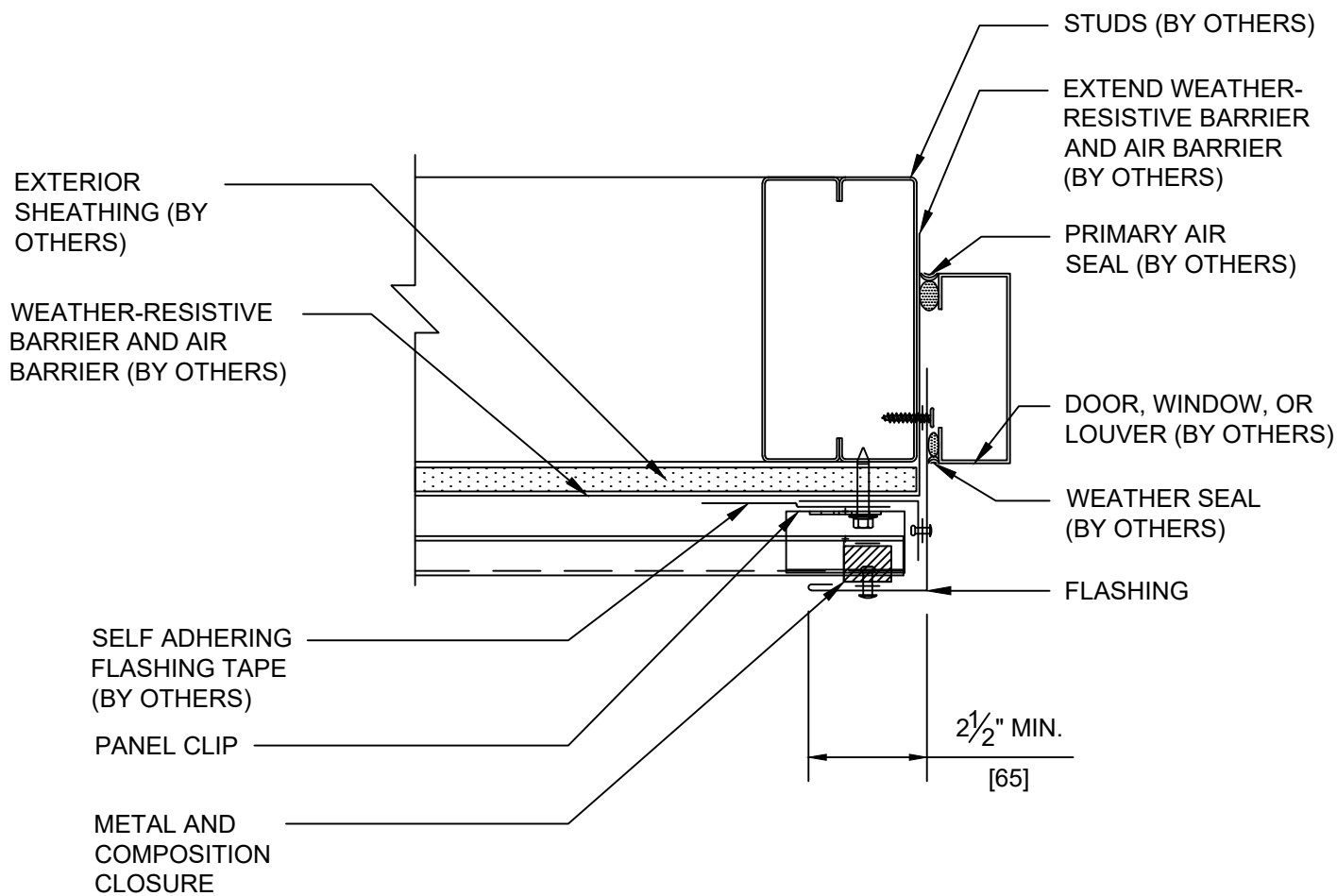
OCT20

REV:

0

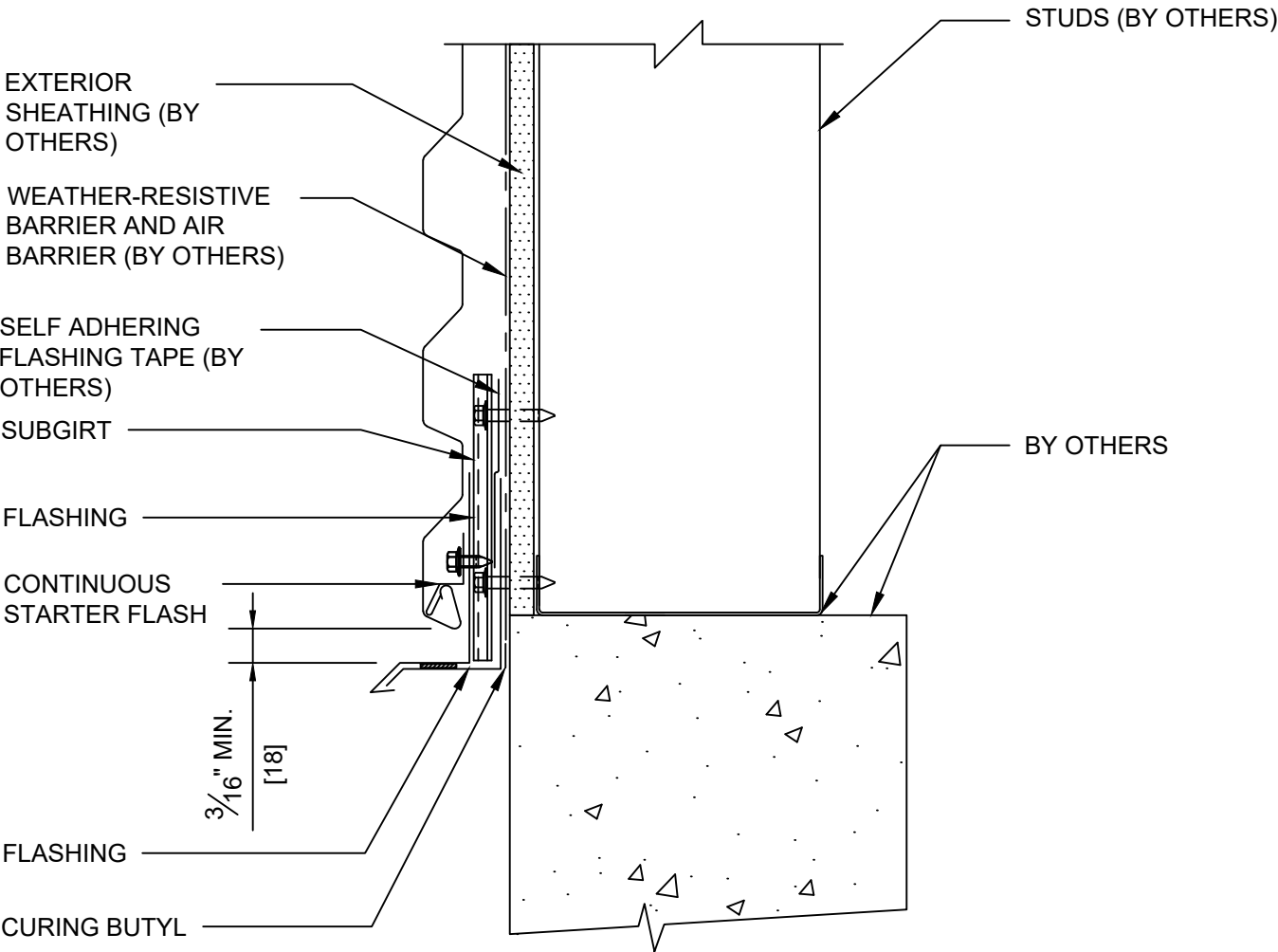
ARCHITECTURAL

BASE AT SLAB



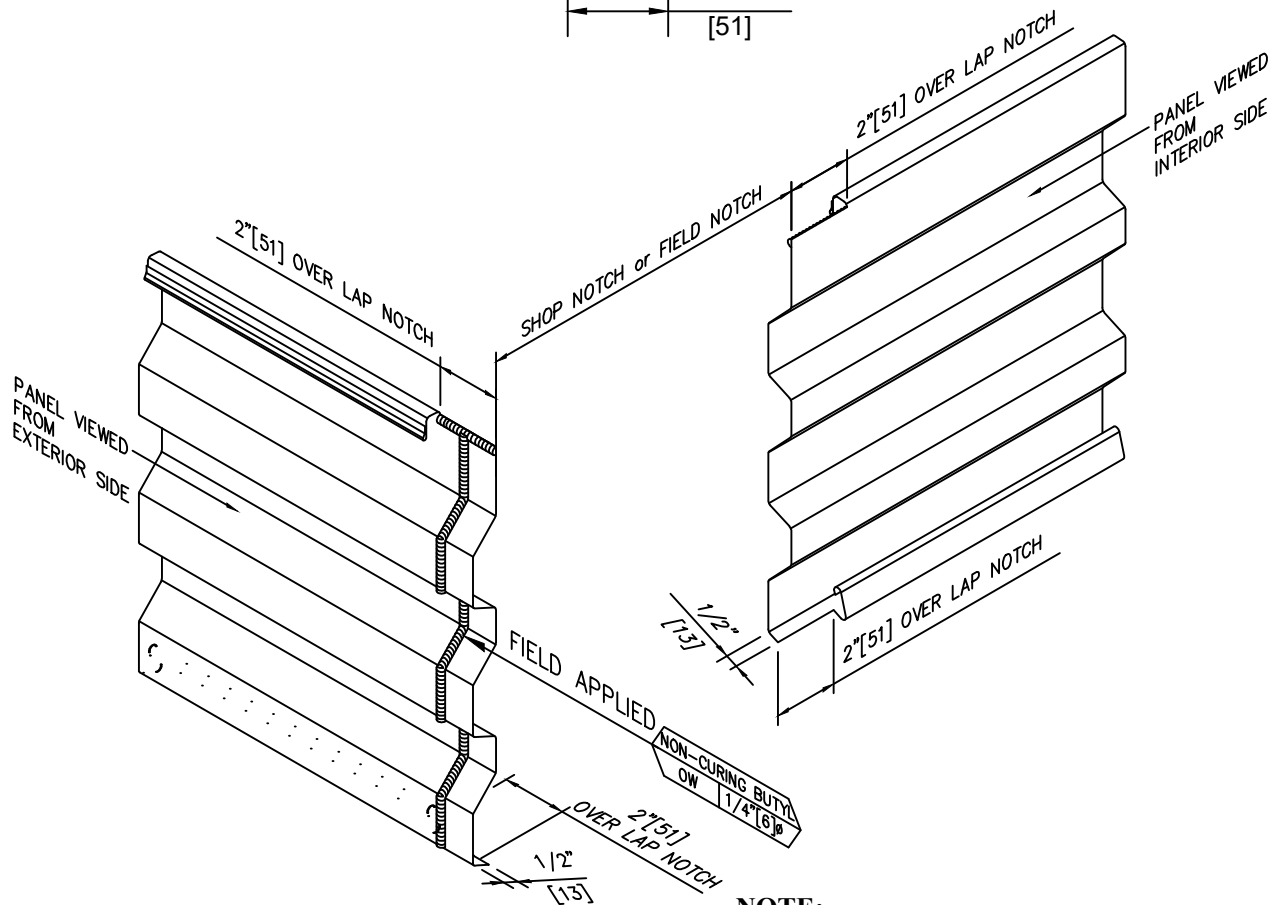
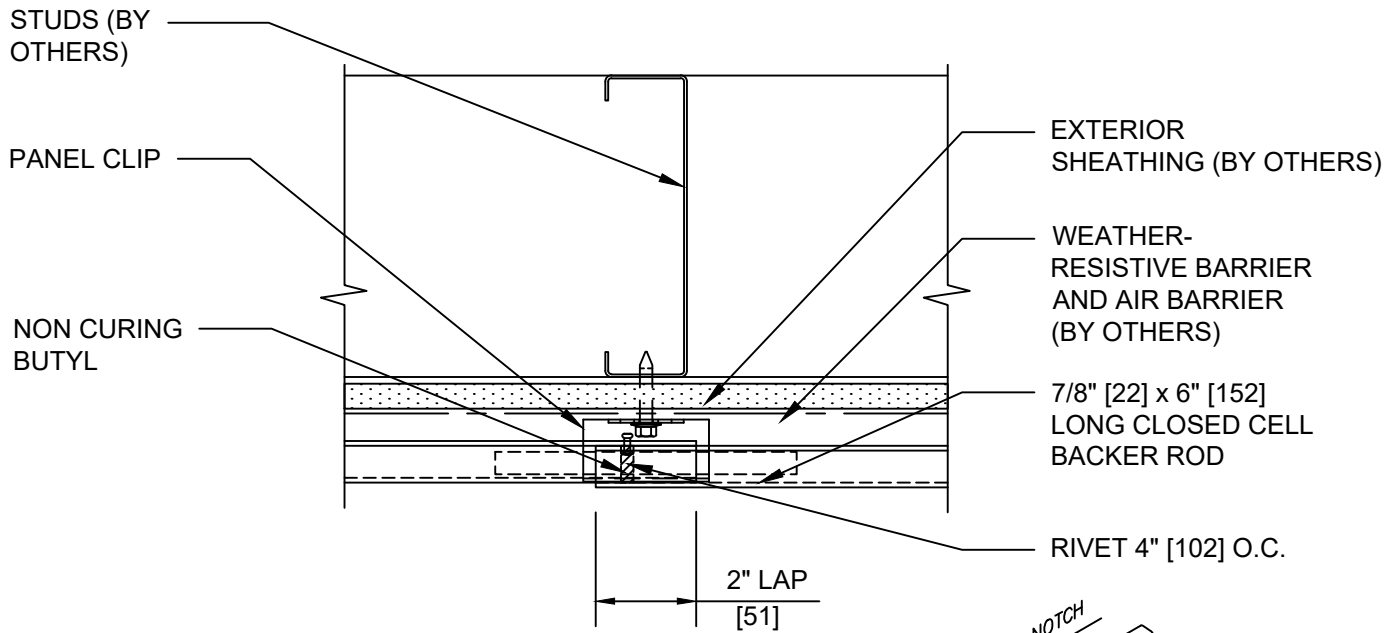
DETAIL 5
JAMB OPENING

*DETAILS SHOWN ARE FOR PROMOTIONAL USE ONLY.
 THESE DETAILS SHOULD NOT FOR ANY REASON BE
 USED FOR CONSTRUCTION PURPOSES.



DETAIL 3B
 BASE @ CURB

*DETAILS SHOWN ARE FOR PROMOTIONAL USE ONLY.
 THESE DETAILS SHOULD NOT FOR ANY REASON BE
 USED FOR CONSTRUCTION PURPOSES.



DETAIL 2
ENDLAP (22 & 24 GAUGE ONLY)

NOTE:
THE MAXIMUM CUMULATIVE LENGTH OF LAPPED PANELS IS 60'-0" FOR STEEL AND 30'-0" FOR ALUMINUM PANELS. SPECIFIC DETAILS MUST BE USED THAT WILL ACCOMMODATE THERMAL MOVEMENT. FOR PANEL RUNS WITH MULTIPLE PANELS, PROVIDE A FIXING POINT AT THE CENTER OF EACH PANEL RUN PER DETAIL CS-6027.

*DETAILS SHOWN ARE FOR PROMOTIONAL USE ONLY. THESE DETAILS SHOULD NOT FOR ANY REASON BE USED FOR CONSTRUCTION PURPOSES.

DRAWING NO:

XX

DATE:

OCT20

REV:

0