



SINGLE SKIN PANEL BROCHURE





PROJECT: TUPELO AQUATIC CENTER
PANEL TYPE: ECOSCREEN ECONOLAP 3/4",
ECONOLAP 3/4"
LOCATION: TUPELO, MS

Cover Photo
PROJECT: SALLY RIDE ELEMENTARY SCHOOL
PANEL TYPE: CS660, ECONOLAP 3/4",
ECOSCREEN ECONOLAP 3/4"
LOCATION: LOS ANGELES, CA

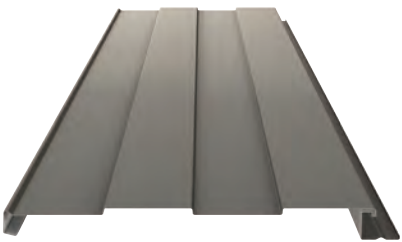
TABLE OF CONTENTS

CONCEALED FASTENING SYSTEMS	4
EXPOSED FASTENING SYSTEMS	12
PERFORATED SCREENWALL SYSTEMS	18
SOFFITS	21
BENEFITS & INFORMATION	22

OUR PRODUCTS

CONCEALED FASTENING SYSTEMS

Metal roofs and walls that use concealed fastener panels combine an elegant design with the toughness of steel. These panels are primarily used in architectural applications, but are also an appealing option for residential and commercial applications. Concealed fastener panels provide excellent weather resistance and increased durability. These panels can be applied over conventional or wood-framed structures and are usually narrower than exposed fastener panels and are offered in a variety of unique reveals.

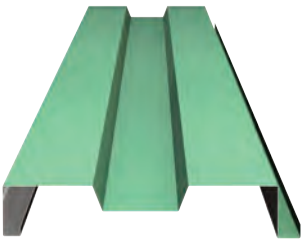


WALL

DESIGNER™ SERIES 16" FLUTED WALL PANEL

PANEL SPECIFICATIONS

- Profile:** 4" wide Flutes, nominal 3/8" deep with a 1¼" deep leg
- Width:** 16"
- Length:** 5'-0" to 35'-0"
- Exterior Face:** Unembossed as standard G-90 galvanized or AZ-50 aluminum-zinc coated steel in 24 and 22 Ga.
- Standard Exterior:** Full-strength 70% PVDF fluoropolymer or siliconized polyester coating
- Fastening:** Concealed fastening system
- Colors:** Standard 1, Standard II, Premium I and Premium II color options



SHADOWRIB® METAL PANEL

PANEL SPECIFICATIONS

- Profile:** 3" deep panel with 1½" deep by 5¼" wide fluting
- Width:** 16"
- Length:** 5'-0" to 40'-0"
- Exterior Face:** Unembossed as standard G-90 galvanized or AZ-50 aluminum-zinc coated steel in 24 and 22 Ga.
- Standard Exterior:** Full-strength 70% PVDF fluoropolymer coating or siliconized polyester coating
- Fastening:** Concealed fastening system
- Colors:** Standard 1, Standard II, Premium I and Premium II color options



WALL

NUWALL® METAL PANEL

PANEL SPECIFICATIONS

Profile: 2½" deep panel with ½" deep fluting

Width: 12"

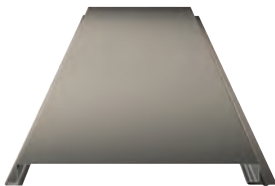
Length: 5'-0" to 40'-0"

Exterior Face: Unembossed as standard G-90 galvanized or AZ-50 aluminum-zinc coated steel in 24 and 22 Ga.

Standard Exterior: Full-strength 70% PVDF fluoropolymer coating or siliconized polyester coating

Fastening: Concealed fastening system

Colors: Standard 1, Standard II, Premium I and Premium II color options



FW-120

PANEL SPECIFICATIONS

Profile: Flat with options of one bead at 6" on center or two beads, 4" apart

Width: 12"

Length: 5'-0" to 30'-0"

Exterior Face: Unembossed as standard G-90 galvanized or AZ-50 aluminum-zinc coated steel in 24, 22 and 20 Ga.

Standard Exterior: Full-strength 70% PVDF fluoropolymer coating

Fastening: Concealed fastening system

Colors: Standard 1, Standard II, Premium I and Premium II color options



CONCEPT SERIES CS-200

PANEL SPECIFICATIONS

Profile: ⅝" rib height on center with staggered patterns

Width: 12"

Height: ⅝"

Length: 5'-0" to 30'-0"

Exterior Face: G90 galvanized steel 22, 20, and 18 Ga. in unembossed or 22 and 20 Ga. in non-directional embossed

Joint: Interlocking

Fastening: Concealed fastening system

Colors: Standard 1, Standard II, Premium I and Premium II color options



CONCEPT SERIES CS-260

PANEL SPECIFICATIONS

Profile: ⅝" rib height on center with staggered patterns

Width: 12"

Height: ⅝"

Length: 5'-0" to 30'-0"

Exterior Face: G90 galvanized steel 24, 22, 20, and 18 Ga. in unembossed or non-directional embossed (18 Ga. not available).

Joint: Interlocking

Fastening: Concealed fastening system

Colors: Standard 1, Standard II, Premium I and Premium II color options

CONCEALED FASTENING SYSTEMS

PROJECT: GOLDEN STATE LUMBER
PANEL TYPE: CS-620, CS-660
LOCATION: CONCORD, CA



WALL

CONCEPT SERIES CS-620

PANEL SPECIFICATIONS

Profile: 7/8" rib height on center with staggered patterns

Width: 16"

Height: 7/8"

Length: 5'-0" to 30'-0"

Exterior Face: G90 galvanized steel 22, 20, and 18 Ga. in unembossed or 22 and 20 Ga. in non-directional embossed

Joint: Interlocking

Fastening: Concealed fastening system

Colors: Standard 1, Standard II, Premium I and Premium II color options

CONCEPT SERIES CS-660

PANEL SPECIFICATIONS

Profile: 7/8" rib height on center with staggered patterns

Width: 16"

Height: 7/8"

Length: 5'-0" to 30'-0"

Exterior Face: G90 galvanized steel 24, 22, 20, and 18 Ga. in unembossed or non-directional embossed (18 Ga. not available)

Joint: Interlocking

Fastening: Concealed fastening system

Colors: Standard 1, Standard II, Premium I and Premium II color options



WALL

IW SERIES IW-10A*

PANEL SPECIFICATIONS
Profile: 1 1/2" rib height on center with staggered patterns
Width: 12"
Height: 1 1/2"
Length: 5'-0" to 25'-0"
Exterior Face: G90 galvanized steel 22, and 20 Ga. in non-directional embossed or 22, 20, and 18 Ga. in unembossed
Joint: Interlocking
Fastening: Concealed fastening system
Colors: Standard 1, Standard II, Premium I and Premium II color options



IW SERIES IW-13A

PANEL SPECIFICATIONS
Profile: 1 1/2" rib height on center with staggered patterns
Width: 12"
Height: 1 1/2"
Length: 5'-0" to 25'-0"
Exterior Face: G90 galvanized steel 22, and 20 Ga. in non-directional embossed or 22, 20, and 18 Ga. in unembossed
Joint: Interlocking
Fastening: Concealed fastening system
Colors: Standard 1, Standard II, Premium I and Premium II color options



IW SERIES IW-20A

PANEL SPECIFICATIONS
Profile: 1 1/2" rib height on center with staggered patterns
Width: 12"
Height: 1 1/2"
Length: 5'-0" to 25'-0"
Exterior Face: G90 galvanized steel 22, and 20 Ga. in non-directional embossed or 22, 20, and 18 Ga. in unembossed
Joint: Interlocking
Fastening: Concealed fastening system
Colors: Standard 1, Standard II, Premium I and Premium II color options



IW SERIES IW-40A*

PANEL SPECIFICATIONS
Profile: 1 1/2" rib height on center with staggered patterns
Width: 12"
Height: 1 1/2"
Length: 5'-0" to 25'-0"
Exterior Face: G90 galvanized steel 22, and 20 Ga. in non-directional embossed or 22, 20, and 18 Ga. in unembossed
Joint: Interlocking
Fastening: Concealed fastening system
Colors: Standard 1, Standard II, Premium I and Premium II color options

*Oil canning" is an inherent part of light-gauge cold-formed metal products, particularly those with broad flat areas. Metl-Span takes every precaution, as defined by MCA, to minimize the effects of oil canning. Lack of flatness or waviness due to oil canning is not sufficient cause for rejection of material.

OUR PRODUCTS

EXPOSED FASTENING SYSTEMS

Metl-Span exposed fastening systems help provide contemporary and environmentally-friendly aesthetics. Oftentimes these panels can be installed both vertically and horizontally, giving you numerous options for your design. To see all of our exposed-fastening options, visit us online at www.metlspan.com



PROJECT: WESTIN HOTEL
PANEL TYPE: IW-10A, IW-13A, IW-20A
LOCATION: BIRMINGHAM, AL



WALL

7.2 METAL WALL PANEL

PANEL SPECIFICATIONS

Profile: Traditional 1½" high-rib height at 7.2" on center

Width: 36"

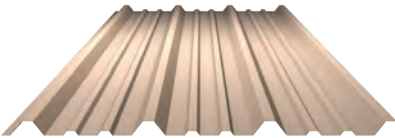
Length: 5'-0" to 50'-0"

Exterior Face: Unembossed as standard G-90 galvanized or AZ-50 aluminum-zinc coated steel in 26, 24 and 22 Ga.

Standard Exterior: Full-strength 70% PVDF fluoropolymer coating or siliconized polyester coating

Fastening: Exposed Through Fasteners

Colors: Standard 1, Standard II, Premium I and Premium II color options



PBR METAL WALL PANEL

PANEL SPECIFICATIONS

Profile: 1¼" rib height at 12" on center

Width: 36"

Length: 5'-0" to 50'-0"

Exterior Face: Unembossed as standard G-90 galvanized or AZ-50 aluminum-zinc coated steel in 26, 24 and 22 Ga.

Standard Exterior: Full-strength 70% PVDF fluoropolymer coating or siliconized polyester coating

Fastening: Exposed Through Fasteners

Colors: Standard 1, Standard II, Premium I and Premium II color options

EXPOSED FASTENING SYSTEMS



WALL

PBC METAL WALL PANEL

PANEL SPECIFICATIONS

Profile: 7/8" rib height at 2 2/3" on center

Width: 32"

Length: 5'-0" to 50'-0"

Exterior Face: Unembossed as standard G-90 galvanized or AZ-50 aluminum-zinc coated steel in 26, 24 and 22 Ga.

Standard Exterior: Full-strength 70% PVDF fluoropolymer coating or siliconized polyester coating

Fastening: Exposed Through Fasteners

Colors: Standard 1, Standard II, Premium I and Premium II color options

PBD METAL WALL PANEL

PANEL SPECIFICATIONS

Profile: 5/8" rib height at 2 2/3" on center

Width: 32"

Length: 5'-0" to 50'-0"

Exterior Face: Unembossed as standard G-90 galvanized or AZ-50 aluminum-zinc coated steel in 26, 24 and 22 Ga.

Standard Exterior: Full-strength 70% PVDF fluoropolymer coating or siliconized polyester coating

Fastening: Exposed Through Fasteners

Colors: Standard 1, Standard II, Premium I and Premium II color options

PBU METAL WALL PANEL

PANEL SPECIFICATIONS

Profile: 3/4" rib height at 6" on center

Width: 36"

Length: 5'-0" to 50'-0"

Exterior Face: Unembossed as standard G-90 galvanized or AZ-50 aluminum-zinc coated steel in 26, 24 and 22 Ga.

Standard Exterior: Full-strength 70% PVDF fluoropolymer coating or siliconized polyester coating

Fastening: Exposed Through Fasteners

Colors: Standard 1, Standard II, Premium I and Premium II color options



ECONOLAP 3/4"

PANEL SPECIFICATIONS

Profile: 3/4" rib height on center with staggered patterns

Width: 34 2/3"

Height: 3/4"

Length: 5'-0" to 40'-0"

Exterior Face: G90 galvanized steel 24, 22, 20, and 18 Ga. in unembossed or non-directional embossed (18 Ga. not available)

Joint: Overlapping

Fastening: Exposed Through Fasteners

Colors: Standard 1, Standard II, Premium I and Premium II color options

BR5-36

PANEL SPECIFICATIONS

Profile: 1 1/2" rib height on center with staggered patterns

Width: 36"

Height: 1 1/2"

Length: 5'-0" to 40'-0"

Exterior Face: G90 galvanized steel 24, 22, 20, and 18 Ga. in unembossed or non-directional embossed (18 Ga. not available)

Joint: Overlapping

Fastening: Exposed Through Fasteners

Colors: Standard 1, Standard II, Premium I and Premium II color options

MR3-36

PANEL SPECIFICATIONS

Profile: 3" rib height on center with staggered patterns

Width: 36"

Height: 3"

Length: 5'-0" to 40'-0"

Exterior Face: G90 galvanized steel 24, 22, 20, and 18 Ga. in unembossed or non-directional embossed (18 Ga. not available)

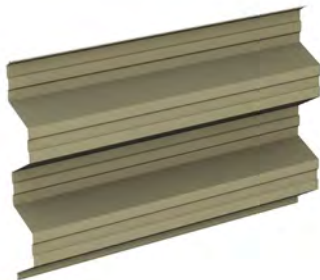
Joint: Overlapping

Fastening: Exposed Through Fasteners

Colors: Standard 1, Standard II, Premium I and Premium II color options

EXPOSED FASTENING SYSTEMS

PROJECT: MEDICAL CENTER OF THE ROCKIES AND MOBS
PANEL TYPE: BR5-36, IW-10A
LOCATION: LOVELAND, CO



WALL

TR4-36

PANEL SPECIFICATIONS

Profile: 1 ½" rib height on center with staggered patterns

Width: 36"

Height: 1 ½"

Length: 5'-0" to 40'-0"

Exterior Face: G90 galvanized steel 24, 22, 20, and 18 Ga. in unembossed or non-directional embossed (18 Ga. not available)

Joint: Overlapping

Fastening: Exposed Through Fasteners

Colors: Standard 1, Standard II, Premium I and Premium II color options

STYLE-RIB

PANEL SPECIFICATIONS

Profile: Nominal 1 ½" rib height on center with staggered patterns

Width: 36"

Height: Nominal 1 ½"

Length: 5'-0" to 40'-0"

Exterior Face: G90 galvanized steel 24, 22, 20, and 18 Ga. in unembossed or non-directional embossed (18 Ga. not available)

Joint: Overlapping

Fastening: Exposed Through Fasteners

Colors: Standard 1, Standard II, Premium I and Premium II color options

SUPER-RIB

PANEL SPECIFICATIONS

Profile: 4" rib height on center with staggered patterns

Width: 24"

Height: 4"

Length: 5'-0" to 40'-0"

Exterior Face: G90 galvanized steel 22, 20, and 18 Ga. in unembossed or 22 and 20 Ga. in non-directional embossed

Joint: Overlapping

Fastening: Exposed Through Fasteners

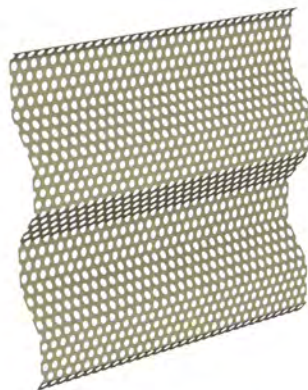
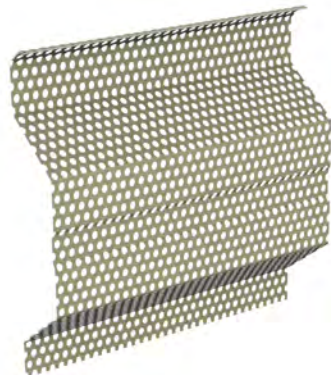
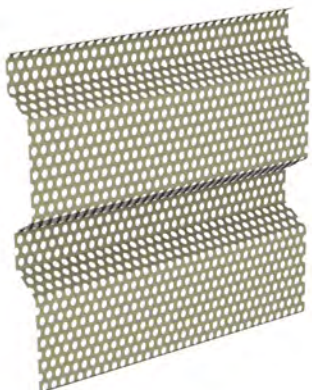
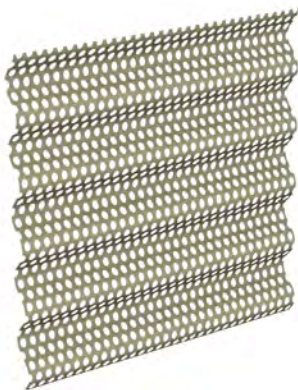
Colors: Standard 1, Standard II, Premium I and Premium II color options



OUR PRODUCTS

PERFORATED SCREENWALL SYSTEMS

EcoScreen Perforated panels create a screen wall using either 20-gauge stainless steel or 0.04" painted aluminum using our unique fabrication process. Our perforated metal panels combine an airy aesthetic with outstanding performance, blending industrial and other applications with their surroundings. The perforation pattern is available in a wide variety of options, and allows for air circulation and natural light to pass through, while providing additional security and unique aesthetic appeal. EcoScreen Perforated Screenwall can be integrated with non-perforated exposed panels and installed vertically or horizontally.



WALL

ECOSCREEN ECONOLAP 3/4"

PANEL SPECIFICATIONS

- Width:** 34 2/3"
- Height:** 3/4"
- Length:** 5'-0" to 30'-0" (Stainless Steel) or 5'-0" to 20'-0" (Aluminum)
- Exterior Profile:** 3/4" rib height on center with reversed or staggered pattern unembossed
- Exterior Face:** Unembossed Stainless Steel (304) in 20 Ga. Or Aluminum (3003-H14) in 0.040"
- Joint:** Overlapping
- Fastening:** Exposed Through Fasteners
- Colors:** Stainless Steel: 2B, Aluminum: Standard I, Standard II, Premium I and Premium II color options*

ECOSCREEN BR5-36

PANEL SPECIFICATIONS

- Width:** 36"
- Height:** 1 1/2"
- Length:** 5'-0" to 30'-0" (Stainless Steel) or 5'-0" to 20'-0" (Aluminum)
- Exterior Profile:** 1 1/2" rib height on center with reversed or staggered pattern unembossed
- Exterior Face:** Unembossed Stainless Steel (304) in 20 Ga. Or Aluminum (3003-H14) in 0.040"
- Joint:** Overlapping
- Fastening:** Exposed Through Fasteners
- Colors:** Stainless Steel: 2B, Aluminum: Standard I, Standard II, Premium I and Premium II color options*

ECOSCREEN MR3-36

PANEL SPECIFICATIONS

- Width:** 36"
- Height:** 3"
- Length:** 5'-0" to 30'-0" (Stainless Steel) or 5'-0" to 20'-0" (Aluminum)
- Exterior Profile:** 3" rib height on center with reversed or staggered pattern unembossed
- Exterior Face:** Unembossed Stainless Steel (304) in 20 Ga. Or Aluminum (3003-H14) in 0.040"
- Joint:** Overlapping
- Fastening:** Exposed Through Fasteners
- Colors:** Stainless Steel: 2B, Aluminum: Standard I, Standard II, Premium I and Premium II color options*

PERFORATION PATTERN OPTIONS

OPEN / FREE AREA PERCENTAGE	PATTERN	DIAMETER	SPACING
10%	Reverse	1/8"	3/8"
23%	Reverse	1/8"	1/4"
23%	Reverse	1/4"	1/2"
30%	Staggered	1/8"	7/32"
33%	Staggered	3/16"	5/16"
40%°	Staggered	1/8"	3/16"
40%	Staggered	3/8"	9/16"

* Pre-painted coils. No finish warranty available.
° Pattern is not available in stainless steel for Style-Rib, BR5-36 or MR3-36

ECOSCREEN STYLE-RIB

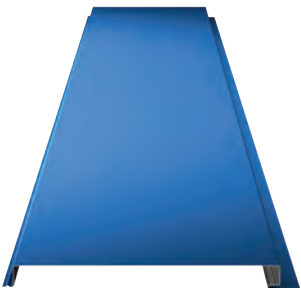
PANEL SPECIFICATIONS

- Width:** 36"
- Height:** 1 1/2"
- Length:** 5'-0" to 30'-0" (Stainless Steel) or 5'-0" to 20'-0" (Aluminum)
- Exterior Profile:** 1 1/2" rib height on center with reversed or staggered pattern unembossed
- Exterior Face:** Unembossed Stainless Steel (304) in 20 Ga. Or Aluminum (3003-H14) in 0.040"
- Joint:** Overlapping
- Fastening:** Exposed Through Fasteners
- Colors:** Stainless Steel: 2B, Aluminum: Standard I, Standard II, Premium I and Premium II color options*



OUR PRODUCTS

SOFFITS



SOFFIT

ARTISAN® SERIES METAL SOFFIT PANEL

PANEL SPECIFICATIONS

Profile: Flat panel

Width: 12"

Length: 12" panel: 4'-0"; inquire about longer lengths

Exterior Face: Unembossed as standard G-90 galvanized or AZ-50 aluminum-zinc coated steel in 26, 24 and 22 Ga.

Standard Exterior: Full-strength 70% PVDF fluoropolymer coating or siliconized polyester coating

Fastening: Concealed fastening system

BENEFITS & INFORMATION



ENVIRONMENTALLY CONNECTED

Given today’s emphasis on performance-driven building design and construction, Metl-Span’s products offer the best solution to help optimize building efficiency for architects, contractors and owners.

Metl-Span, as part of the Cornerstone Building Brands family, leads the industry in the development of energy-efficient and cost-effective insulated metal panel systems, through UL-certified and ISO-compliant products. Our company has been dedicated to a cleaner, safer environment since our origination in 1968. As evidence of our leadership in this role, we offer an Environmental Product Declaration (EPD), which provides a detailed analysis of our products’ environmental manufacturing footprint, based on an ISO-compliant Life Cycle Assessment (LCA).

Metl-Span’s LCA measures the impact of our products on the environment during all phases of their life, from supply chain through the manufacturing process to product use and end of life. ISO LCA standards are applied to accurately report the products’ impact on the environment.

See metlspan.com for published EPD and LCA.

MATERIALS & COATINGS

The base metal is 18-, 20-, 22-, 24- or 26-gauge steel manufactured from either high-strength Galvalume® produced to ASTM A792/A792M-AZ50 or AZ55, Grade 50 or HDG produced to ASTM A653/A653M-G90 structural aluminum. Finishes include baked enamel, urethane and Plastisol. All materials are available smooth or stucco-embossed.

All metal architectural panels have wide, flat surfaces to meet the demands of today’s design. While Metl-Span has recognized and responded to this requirement, we have a responsibility to advise that a wide and perfectly flat appearance is not always possible. In some wide products, panel distortion—called oil canning—may occur and require additional aesthetic tolerance and/or additional support behind the panel face. Heavier gauges, narrower widths, striations and embossing minimize oil canning.

PAINT FINISHES

To ensure a lasting, quality appearance, the exterior face sheet of all Metl-Span single skin metal wall panels are treated with a base primer, followed by a premium, full-strength 70% PVDF fluoropolymer coating as standard. A siliconized polyester coating is available in a limited palette of standard colors for projects where economy is the primary consideration. A wide variety of finishes are available. For more information, see color chart or visit metlspan.com.

COLORS

Single Skin metal panels come in variety of standard colors to meet solar reflective requirements. For a complete list of our standard colors, please review our color chart. WE also do custom colors and color matching. For more information regarding specific colors, please contact a local representative.

PAINT WARRANTIES

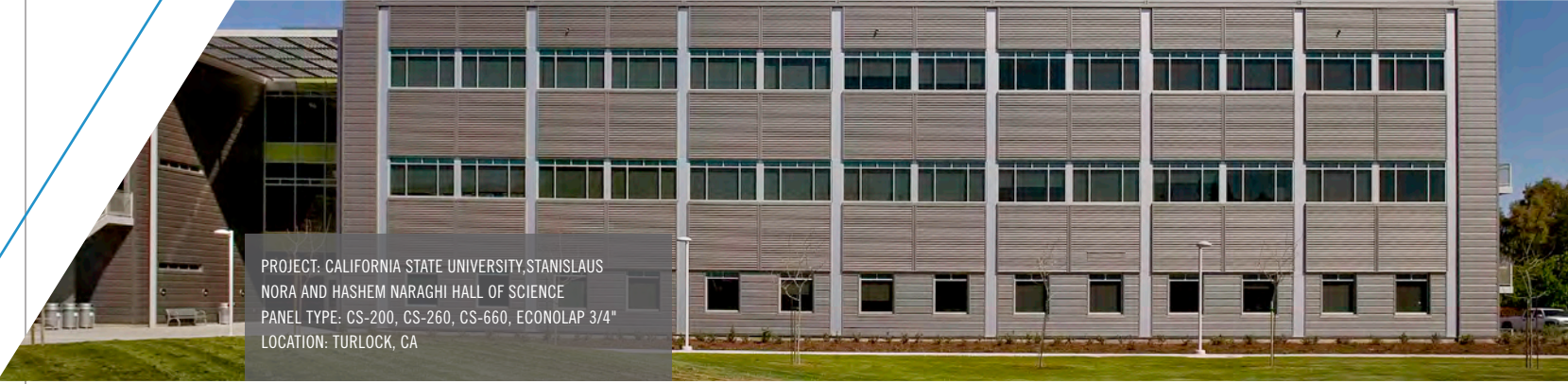
Forty-year limited paint warranties are available upon written request and project qualification for all paint colors except Brite Red, which has a 25-year warranty. A 10-year warranty is available for applied finishes. (Outside the continental United States, please inquire.)



PROJECT: PIER 27 - PORT OF SAN FRANCISCO
PANEL TYPE: CS-200, CS-260
LOCATION: SAN FRANCISCO, CA



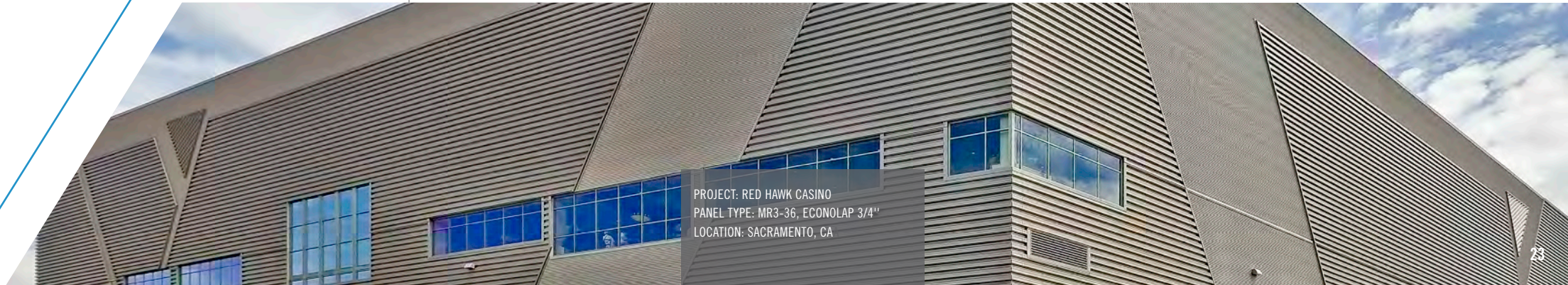
PROJECT: LUMBERTON MUNICIPAL UTILITY
DISTRICT OFFICE FACILITY
PANEL TYPE: CS-200
LOCATION: LUMBERTON, TX



PROJECT: CALIFORNIA STATE UNIVERSITY, STANISLAUS
NORA AND HASHEM NARAGHI HALL OF SCIENCE
PANEL TYPE: CS-200, CS-260, CS-660, ECONOLAP 3/4"
LOCATION: TURLOCK, CA



PROJECT: WESTERN MENTAL HEALTH INSTITUTE
PANEL TYPE: CS-200, CS-260
LOCATION: BOLIVAR, TN



PROJECT: RED HAWK CASINO
PANEL TYPE: MR3-36, ECONOLAP 3/4"
LOCATION: SACRAMENTO, CA



Metl-Span: All-In-One Performance
1720 Lakepointe Drive, Suite 101, Lewisville, Texas 75057 (p) 877.585.9969 metlspan.com

© Metl-Span 2021, part of the **Cornerstone Building Brands** family. All Rights Reserved. Printed in the U.S.A.
PART NUMBER ICIPS0416 Revised NJ/4_21