



Metl-Span IMPs Make the Grade

A school building's exterior can speak volumes about the educational excellence on the inside – and K-12 schools across the country are taking note.

In fact, **construction costs for educational projects recently reached record highs of over \$100 billion.** With so much invested in creating an efficient space for the future of our country to learn, it's important to specify the right building products for the job.

Metl-Span® insulated metal panels (IMPs) feature both the adaptability to modify and match the unique needs of all educational building projects, along with the versatility required to fast-track a building's transformation. Metl-Span IMPs provide educational facilities with impermeable faces and built-in thermal breaks to ensure the highest insulating values are maintained for the entire lifecycle of the building.

Metl-Span IMP Benefits:

Accelerated Installation – IMPs cater to rapid construction, an important factor considering the need for a greater number of schools to accommodate a surge of up to 100,000 school-aged children over the next few years. With a single-source enclosure and all-weather installation, Metl-Span IMPs enable faster building completion and reduced construction costs to get a school up and running on time and on budget for a new academic year.

A+ Insulation – Technology is enhancing the way students learn inside the classroom – and building products need to provide the protective covering to do the same. Metl-Span IMPs are equipped with a class 1 polyurethane foam core to provide enhanced insulation values and the highest R-value per inch of any commercial product.

Aesthetic Advantages – Schools are a source of pride for their local community, so a school building's façade should showcase the best that region has to offer. Metl-Span IMPs come in an evolving array of color palettes and finishes to make your next educational project something students, faculty and parents alike can be excited about.

For more information on how Metl-Span insulated metal wall systems can impact your next educational project, visit www.metlspan.com/markets/education. To discuss requirements and options for your next project, call **877.585.9969**.



CF Architectural Horizontal

JOINT INTERSECTION



INTEGRATED WINDOW



REVEALS



PANEL PROFILE



PRODUCT SPECIFICATIONS

WIDTH: 24", 30", 36"

THICKNESS: 2", 2.5", 3", 4"

LENGTH: 8'-0" TO 32'-0" for embossed
8'-0" TO 16'-0" or unembossed

EXTERIOR PROFILE: Flat appearance providing a monolithic look, embossed or unembossed

U-FACTOR¹ (BTU/h·ft²·F°)

PANEL WIDTH: 36"

	75°
2"	0.0669
2.5"	0.0500
3"	0.0400
4"	0.0307

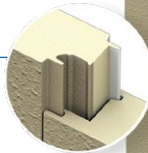
R-VALUE¹ (h·ft²·F°/BTU)

PANEL WIDTH: 36"

	75°
2"	14.95
2.5"	20.00
3"	25.00
4"	32.57

Tuff-Cast

LOCK & GROOVE SYSTEM



PANEL

PANEL PROFILE



PRODUCT SPECIFICATIONS

WIDTH: 36", 42"

THICKNESS: 2", 2.5", 3", 4", 5"², 6"²

LENGTH: 8'-0" TO 32'-0" for horizontal textured
8'-0" TO 40'-0" for vertical textured

EXTERIOR PROFILE: Factory-applied Tuff Cote[®] system textured finish similar to precast concrete.

U-FACTOR¹ (BTU/h·ft²·F°)

PANEL WIDTH: 42"

	75°
2"	0.0669
2.5"	0.0500
3"	0.0400
4"	0.0307
5"	0.0264
6"	0.0224

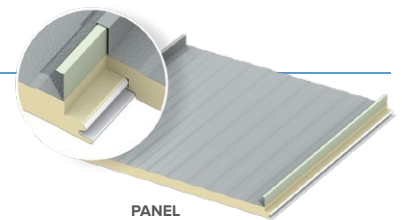
R-VALUE¹ (h·ft²·F°/BTU)

PANEL WIDTH: 42"

	75°
2"	14.95
2.5"	20.00
3"	25.00
4"	32.57
5"	37.88
6"	44.64

CFR

LOCK & GROOVE SYSTEM



PANEL

PANEL PROFILE



PRODUCT SPECIFICATIONS

WIDTH: 30"³, 36", 42"

THICKNESS: 2", 2.5", 3", 4", 5", 6"

LENGTH: 9'-6" TO 53'-0"; contact Metl-Span for custom length availability

EXTERIOR PROFILE: 2" high standing seam with a Mesa profile between the seams, embossed

U-FACTOR¹ (BTU/h·ft²·F°)

PANEL WIDTH: 42"

	75°
2"	0.0600
2.5"	0.0490
3"	0.0414
4"	0.0318
5"	0.0257
6"	0.0217

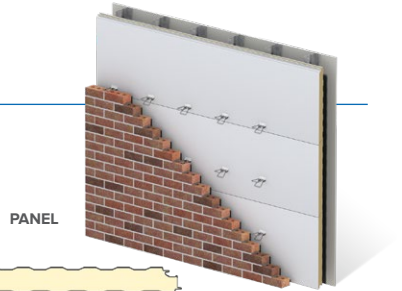
R-VALUE¹ (h·ft²·F°/BTU)

PANEL WIDTH: 42"

	75°
2"	16.67
2.5"	20.41
3"	24.15
4"	31.45
5"	38.91
6"	46.08

HPCI Barrier

PANEL



PANEL PROFILE

PRODUCT SPECIFICATIONS

WIDTH: 42"

THICKNESS: 2", 2.5", 3", 4", 5", 6"

LENGTH: 8'-0" to 32'-0" for horizontal
8'-0" to 52'-0" for vertical

EXTERIOR PROFILE: Longitudinal ribs, spaced at nominal 4" on center, nominal 1/16", embossed

U-FACTOR¹ (BTU/h·ft²·F°)

PANEL WIDTH: 42"

	75°
2"	0.0706
2.5"	0.0516
3"	0.0424
4"	0.0324
5"	0.0264
6"	0.0224

R-VALUE¹ (h·ft²·F°/BTU)

PANEL WIDTH: 42"

	75°
2"	14.16
2.5"	19.38
3"	23.58
4"	30.86
5"	37.88
6"	44.64

¹Based on ASTM C518, ASTM C1363 and thermal modeling, 75° F core mean temp. ²5" and 6" CF Tuff-Cast and Tuff Wall available with Mesa, nominal 1/8" deep profile only.

³Available only from Texas plant.