



PRODUCT SHOWCASE



TABLE OF CONTENTS

INDUSTRY LEADER	2
WHY INSULATED METAL PANELS	3
WHAT WE'VE DONE	6
RETROFIT	10
OUR PRODUCTS	
INSULATED METAL PANELS	13
SPECIALTY PANELS	18
BACKUP WALL PANELS	22
ROOF	25
CASE STUDY	26
METL-VISION®	27
TESTING & CERTIFICATIONS	28
DESIGN OPTIONS	29
OUR PRODUCTS	
SINGLE SKIN PANELS:	
CONCEALED FASTENING SYSTEMS	30
EXPOSED FASTENING SYSTEMS	36
PERFORATED SCREENWALL SYSTEMS	40



PROJECT: UNIVERSITY OF HOUSTON -
BASEBALL CLUBHOUSE
PANEL TYPE: TUFF-CAST
LOCATION: HOUSTON, TEXAS

INDUSTRY LEADER

INSULATED METAL PANELS

METL-SPAN DELIVERS HIGH-QUALITY, DURABLE AND ENERGY-EFFICIENT SOLUTIONS DESIGNED FOR UNPARALLELED PERFORMANCE TO STAND THE TEST OF TIME.

Metl-Span is a dynamic industry innovator dedicated to manufacturing and providing the highest quality insulated building panel products. Since our origination in 1968, we have been pioneers in research, design, production and sale of state-of-the-art insulated metal panels for institutional, commercial, industrial and cold storage buildings.

Through our unparalleled customer service, Metl-Span ensures a timely and cost effective building project. Since our teammates understand your needs and are committed to your success, we provide the tools needed to incorporate our insulated panels into any building design



PROJECT: ZIALENA WINERY & HOSPITALITY BUILDING
PANEL TYPE: CF ARCHITECTURAL, CFR ROOF, LIGHT MESA
LOCATION: GEYSERVILLE, CALIFORNIA

WHY INSULATED METAL PANELS (IMPs)

FEATURES & BENEFITS



ALL-IN-ONE BARRIER

Metl-Span panels are comprised of an advanced urethane core* that is injected between two pre-finished steel facings, forming a single, all-in-one unit. The result is the most thermally efficient panel available. Wall panels also have a specially formed side joint that permits the hidden application of sealant within recessed grooves, creating an impenetrable water and vapor seal that protects your building against extreme weather.



TIME

Metl-Span panels are pre-fabricated units, shipped to the jobsite ready-to-install in nearly all types of weather.



LABOR COSTS

Insulated metal panels are designed for easy and efficient installation to keep your project on schedule. The concealed fastener side joint allows for quick installation, reducing construction time and getting closed in sooner.

IMPs reduce the amount of labor trades associated with conventional multi-component wall and roof assemblies. IMPs all-in-one construction provides all the necessary thermal, air, vapor and water barriers in a single product.



ENERGY EFFICIENCY

Each insulated metal panel contains an advanced urethane core* that provides highly efficient insulation to drive down building energy usage and overall costs.



PRESENCE

Metl-Span strives to offer production dates determined by customer needs, not manufacturer convenience. With manufacturing locations across the United States and Canada, Metl-Span offers faster service to our customers and reduced transportation costs.



GREEN STANDARDS/SUSTAINABLE

Metl-Span panels are sustainably constructed, qualifying many buildings for credits in the Leadership in Energy and Environmental Design (LEED®) Rating System.



FIRE-RESISTANT SOLUTIONS

Composite IMPs are available, using non-structural mineral wool insulation fabricated and tested to achieve the needed fire ratings.



DESIGN FLEXIBILITY

Metl-Span panels are available in a variety of flat and corrugated surfaces suitable for exterior walls, interior walls and roofs. They come in multiple profiles that can be used in either horizontal or vertical designs with custom modular widths and corners. With a full range of colors, reveals, and detail accessories that can support or enhance any design.

* ThermalSafe panels contain a fire-resistive mineral wool core.

ALL-IN-ONE SOLUTION

IMPs create the perfect envelope solution in one easy step compared to traditional multi-component built-up systems.

INSULATED METAL PANELS



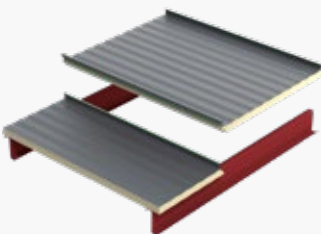
INSULATED METAL PANEL WALL

- Double joint system provides redundancy against leakage.
- Rigid, continuous insulation, no loss of R-value due to compression.
- Meets or exceeds energy code requirements in ALL climate zones.
- FM 4880 Class 1 approved. Suitable for use in combustible and non-combustible construction per IBC chapter 26.



BACKUP WALL WITH BRICK OVERLAY

- All-in-one barrier component wall simplifies design and installation.
- Eliminates condensation risks associated with cavity walls.
- Meets energy code requirements in all climate zones.
- Single step installation provides savings when labor costs are high.



INSULATED METAL PANEL ROOF

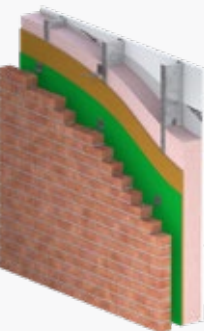
- IMPs are rigid, no loss of R-value due to compression.
- Weathertight seams ensure proper performance against leakage.
- Panels are factory notched and swaged for ease of installation.
- Panels contain all necessary control layers (air, water, vapor and thermal)

TRADITIONAL BUILT-UP METHODS



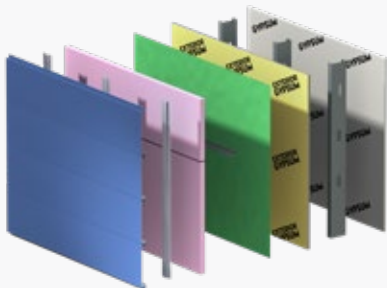
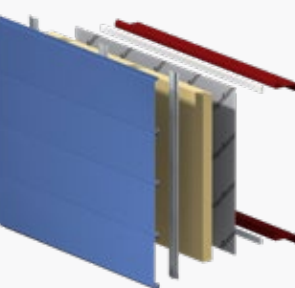
Single Layer Wall

- No redundancy as failures in barrier walls result in uncontrolled leakage.
- Compressed insulation can reduce in-place R-values by as much as 40%.
- Vapor barrier facing subject to wear and tear, damaging air/vapor barrier integrity.



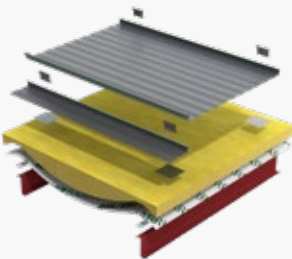
BRICK & MASONRY WALL

- Cavity wall design is complex and varies with climate zone.
- Multiple component walls require different trades, increasing construction time and risk.
- Cavity based insulation can reduce rated R-values by up to 40%.



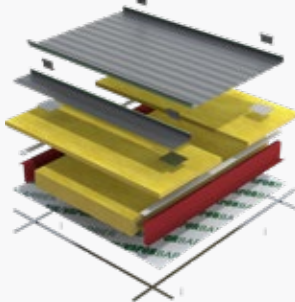
MULTI-COMPONENT WALLS

- Increases wall design complexity.
- Multiple components lead to multiple trades, which lead to increased labor cost and risk.
- Barrier wall design may vary with climate zone.



SINGLE LAYER ROOF

- Compression of insulation results in R-value drops of as much as 40%.
- No longer possible to meet energy codes in many areas with this system.



CAVITY FILLED ROOF

- Multiple components increase installation time.
- Installation requires working over and under roof.
- Air/vapor barrier is punctured by purlin bracing.
- Air/vapor barrier difficult to install in wind, hard to keep smooth and flat.

WHAT WE'VE DONE

A LOOK AT OUR WORK

Our panels are ideally suited for cold storage, commercial and industrial buildings - such as, education, warehouses, healthcare, offices and many more. In addition, retrofit renovations are a great option for upgrading appearances and adding insulation values to existing structures. Metl-Span insulated metal panels can help make your dream building become a reality and add to LEED certification.



PROJECT: THE PABLO CENTER AT THE CONFLUENCE
PANEL TYPE: 7.2 INSUL-RIB
LOCATION: EAU CLAIRE, WISCONSIN



PROJECT: THE CANNON
PANEL TYPE: 7.2 INSUL-RIB, CFR ROOF
LOCATION: HOUSTON, TEXAS



PROJECT: FRESH DIRECT
PANEL TYPE: LIGHT MESA, MESA
LOCATION: BRONX, NEW YORK



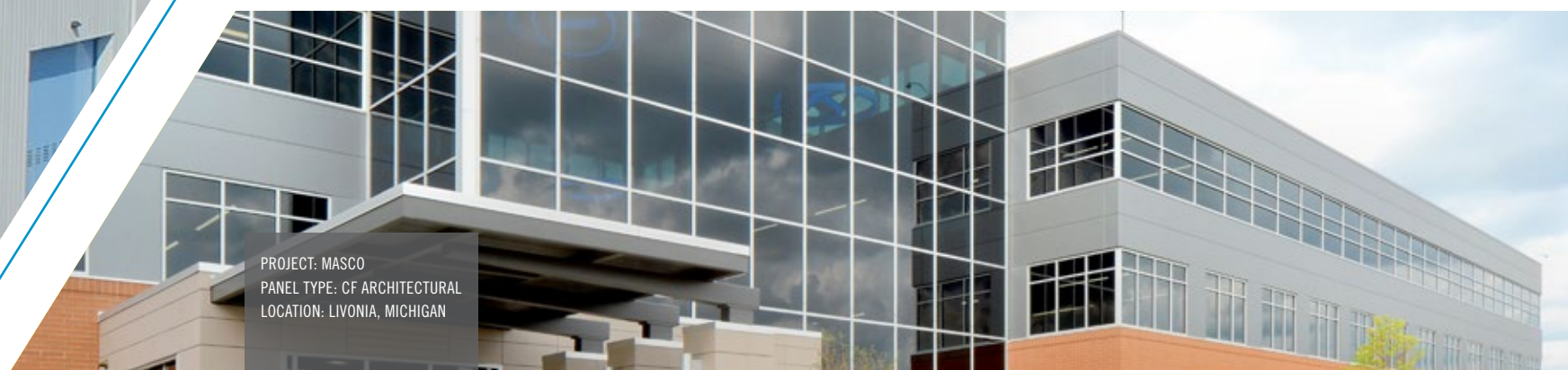
PROJECT: BEACON MAINTENANCE FACILITY
PANEL TYPE: CFR ROOF, FLUTE
LOCATION: BEACON, NEW YORK



PROJECT: THE FINLEY CENTER SPORTS COMPLEX
PANEL TYPE: CFR ROOF, MESA
LOCATION: HOOVER, ALABAMA



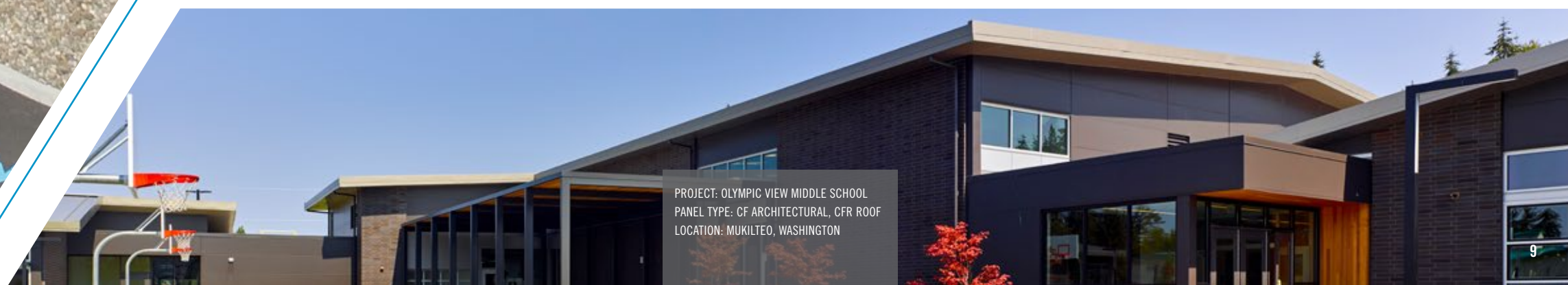
PROJECT: GREENVILLE PUBLIC WORKS
PANEL TYPE: 7.2 INSUL-RIB, CFR ROOF, STRIATED
LOCATION: GREENVILLE, SOUTH CAROLINA



PROJECT: MASCO
PANEL TYPE: CF ARCHITECTURAL
LOCATION: LIVONIA, MICHIGAN



PROJECT: VALE CHURCH
PANEL TYPE: IBL, STRIATED
LOCATION: BLOOMINGTON, ILLINOIS



PROJECT: OLYMPIC VIEW MIDDLE SCHOOL
PANEL TYPE: CF ARCHITECTURAL, CFR ROOF
LOCATION: MUKILTEO, WASHINGTON

RETROFITS

APPLICATIONS

Metl-Span IMPs are an ideal solution for retrofit construction including: walls, ceilings and roofs. Retrofitting is the most efficient and cost-effective way to get your building up to code while maintaining business operations inside.



BEFORE



AFTER

PROJECT: 54 MIDDLESEX
PANEL TYPE: CF ARCHITECTURAL
LOCATION: BEDFORD, MASSACHUSETTS

WATCH VIDEO



OUR PRODUCTS

PRODUCT SPECIFICATIONS

Due to their excellent insulating and weatherproofing characteristics, as well as their very competitive installation cost, Metl-Span panels are ideally suited for use as walls, ceilings and roofs for commercial, industrial and institutional buildings of virtually any scale, in both new and retrofit construction.



FLAT

CF ARCHITECTURAL VERTICAL ▣ •



PANEL SPECIFICATIONS

- Width:** 24", 30", 36"
- Thickness:** 2", 2½", 3", 4"
- Length:** NON-DIRECTIONAL EMBOSSED
8'-0" to 32'-0"
UNEMBOSSED
8'-0" to 16'-0"

- Exterior Profile:** Flat appearance providing a monolithic look, embossed or unembossed
- Exterior Face:** G-90 galvanized or AZ-50 aluminum-zinc coated steel in 22 Ga.
- Interior Profile:** Light Mesa, nominal 1/16" deep, embossed or unembossed
- Interior Face:** G-90 galvanized, or AZ-50 aluminum-zinc coated steel in 26, 24 and 22 Ga.
- Joint:** Offset double tongue-and-groove with extended metal shelf for positive face fastening
- Reveal:** Up to 1" reveal options in ¼" increments or up to 3" reveal options in ½" increments

CF ARCHITECTURAL HORIZONTAL ▣ •



PANEL SPECIFICATIONS

- Width:** 24", 30", 36"
- Thickness:** 2", 2½", 3", 4"
- Length:** NON-DIRECTIONAL EMBOSSED
8'-0" to 32'-0"
UNEMBOSSED
8'-0" to 16'-0"

- Exterior Profile:** Flat appearance providing a monolithic look, embossed or unembossed
- Exterior Face:** G-90 galvanized or AZ-50 aluminum-zinc coated steel in 22 Ga.
- Interior Profile:** Light Mesa, nominal 1/16" deep, embossed or unembossed
- Interior Face:** G-90 galvanized, or AZ-50 aluminum-zinc coated steel in 26, 24 and 22 Ga.
- Joint:** Offset double tongue-and-groove with extended metal shelf for positive face fastening
- Reveal:** Up to 1" reveal options in ¼" increments or up to 3" reveal options in ½" increments

CF SANTA FE ▣ •



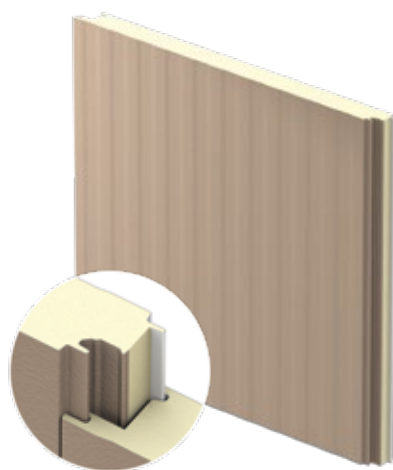
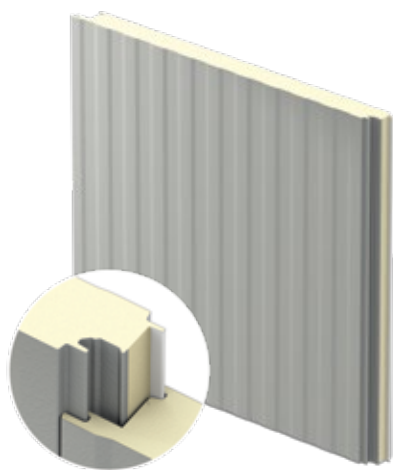
PANEL SPECIFICATIONS

- Width:** 24"* , 30"* , 36", 42"
- Thickness:** 2", 2½", 2¾"*, 3", 4"
- Length:** 8'-0" to 32'-0" Horizontal
8'-0" to 40'-0" Vertical

- Exterior Profile:** Flat profile with heavy embossing simulates a desert southwestern appearance
- Exterior Face:** G-90 galvanized or AZ-50 aluminum-zinc coated steel in 24 and 22 Ga.
- Interior Profile:** Light Mesa, nominal 1/16" deep, embossed or unembossed
- Interior Face:** G-90 galvanized or AZ-50 aluminum-zinc coated steel in 26, 24 and 22 Ga.
- Joint:** Offset double tongue-and-groove with extended metal shelf for positive face fastening
- Reveal:** Up to 1" reveal options in ¼", ½", ¾" and 1" increments

PROJECT: SOUTH CAROLINA AERONAUTICAL
TRAINING CENTER
PANEL TYPE: 7.2 INSUL-RIB, CF ARCHITECTURAL
LOCATION: NORTH CHARLESTON, SOUTH CAROLINA

▣ Contact Metl-Span for reveal options. | • Endfolds, factory pre-formed corners and trimless ends available. | *Available only from Nevada plant.
+ Not available as an exterior application. | Contact Metl-Span for custom length availability.



PROFILE

CF STRIATED ▣ •



PANEL SPECIFICATIONS

Width: 24", 30", 36", 42"

Thickness: 2", 2½", 2¾", 3", 4"

Length: NON-DIRECTIONAL EMBOSSED
8'-0" to 32'-0" Horizontal
8'-0" to 40'-0" for 24", 30", 36" Vertical
8'-0" to 32'-0" for 42" Vertical
UNEMBOSSED
8'-0" to 16'-0" Horizontal
8'-0" to 16'-0" Vertical

Exterior Profile: Longitudinal striations, nominal 1/32" deep, embossed or unembossed

Exterior Face: G-90 galvanized or AZ-50 aluminum-zinc coated steel in 24 and 22 Ga.

Interior Profile: Light Mesa, nominal 1/16" deep, embossed or unembossed

Interior Face: G-90 galvanized or AZ-50 aluminum-zinc coated steel in 26, 24 and 22 Ga.

Joint: Offset double tongue-and-groove with extended metal shelf for positive face fastening

CF MESA ▣



PANEL SPECIFICATIONS

Width: 30", 36", 42", 44"

Thickness: 2", 2½", 3", 4", 5", 6"

Length: NON-DIRECTIONAL EMBOSSED
8'-0" to 32'-0" Horizontal
8'-0" to 52'-0" Vertical
UNEMBOSSED
8'-0" to 16'-0" Horizontal
8'-0" to 40'-0" Vertical

Exterior Profile: Longitudinal corrugations spaced at nominal 4" on center, nominal 1/8" deep, embossed or unembossed

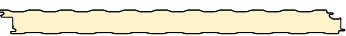
Exterior Face: G-90 galvanized or AZ-50 aluminum-zinc coated steel in 26, 24 and **22 Ga.

Interior Profile: Mesa, nominal 1/8" deep or Light Mesa, nominal 1/16" deep, embossed or unembossed

Interior Face: G-90 galvanized or AZ-50 aluminum-zinc coated steel in 26, 24 and **22 Ga.

Joint: Offset double tongue-and-groove with extended metal shelf for positive face fastening

CF LIGHT MESA ▣ •



PANEL SPECIFICATIONS

Width: 30", 36", 42", 44"

Thickness: 2", 2½", 3", 4", 5", 6"

Length: NON-DIRECTIONAL EMBOSSED
8'-0" to 32'-0" Horizontal
8'-0" to 52'-0" Vertical
UNEMBOSSED
8'-0" to 16'-0" Horizontal
8'-0" to 40'-0" Vertical

Exterior Profile: Lightly profiled 1/16" deep, longitudinal corrugations spaced at nominal 4" on center, embossed or unembossed

Exterior Face: G-90 galvanized or AZ-50 aluminum-zinc coated steel in 26, 24 and 22 Ga.

Interior Profile: Light Mesa, nominal 1/16" deep, embossed or unembossed

Interior Face: G-90 galvanized or AZ-50 aluminum-zinc coated steel in 26, 24 and 22 Ga.

Joint: Offset double tongue-and-groove with extended metal shelf for positive face fastening

CF FLUTE ▣



PANEL SPECIFICATIONS

Width: 42"

Thickness: 2", 2½", 2¾", 3", 4", 5", 6"

Length: NON-DIRECTIONAL EMBOSSED
8'-0" to 32'-0" Horizontal
8'-0" to 52'-0" Vertical

Exterior Profile: 1" wide, nominal 3/8" deep, longitudinal reveals at 8.4" on center, embossed

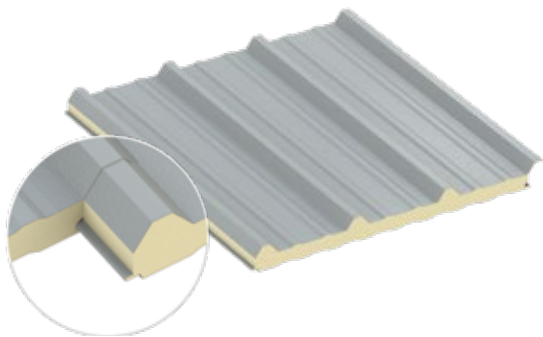
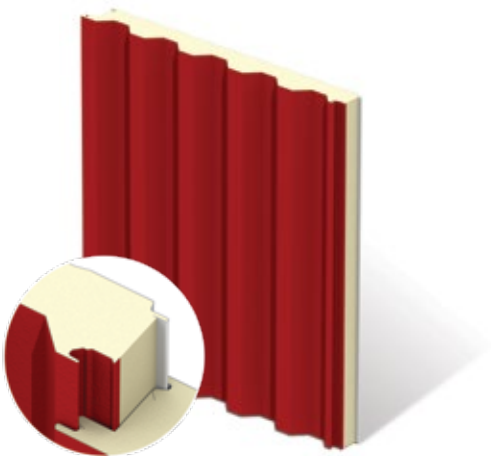
Exterior Face: G-90 galvanized or AZ-50 aluminum-zinc coated steel in 26, 24 and 22 Ga.

Interior Profile: Mesa, nominal 1/8" deep or Light Mesa, nominal 1/16" deep, embossed or unembossed

Interior Face: G-90 galvanized or AZ-50 aluminum-zinc coated steel in 26, 24 and 22 Ga.

Joint: Offset double tongue-and-groove with extended metal shelf for positive face fastening

▣ Contact Metl-Span for reveal options. | • Endfolds, factory pre-formed corners and trimless ends available. | * Available only from Nevada plant.
± Center-to-center corrugation spacing, may vary by manufacturing location. | ** Not available in unembossed.
+ Not available as an exterior application. | Contact Metl-Span for custom length availability.



PROFILE CONTINUED

CF 7.2 INSUL-RIB



PANEL SPECIFICATIONS

Width: Nominal 36"
Thickness:⁺ 3", 4"
Rib height included in thickness

Length: NON-DIRECTIONAL EMBOSSED
8'-0" to 32'-0" Horizontal
8'-0" to 40'-0" Vertical
UNEMBOSSED
8'-0" to 32'-0" Horizontal
8'-0" to 40'-0" Vertical

Exterior Profile: 7.2" on center rib pattern, 1 1/2" tall, embossed or unembossed
Exterior Face: G-90 galvanized or AZ-50 aluminum-zinc coated steel in 26, 24 and **22 Ga.
Interior Profile: Mesa, nominal 1/8" deep, embossed or unembossed
Interior Face: G-90 galvanized or AZ-50 aluminum-zinc coated steel in 26, 24 and 22 Ga.

Joint: Offset double tongue-and-groove with extended metal shelf for positive face fastening

LS-36



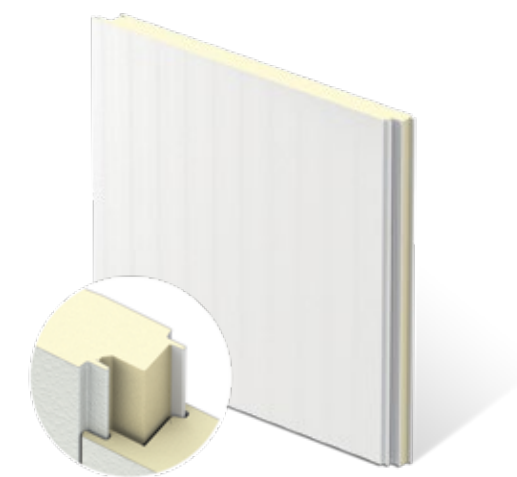
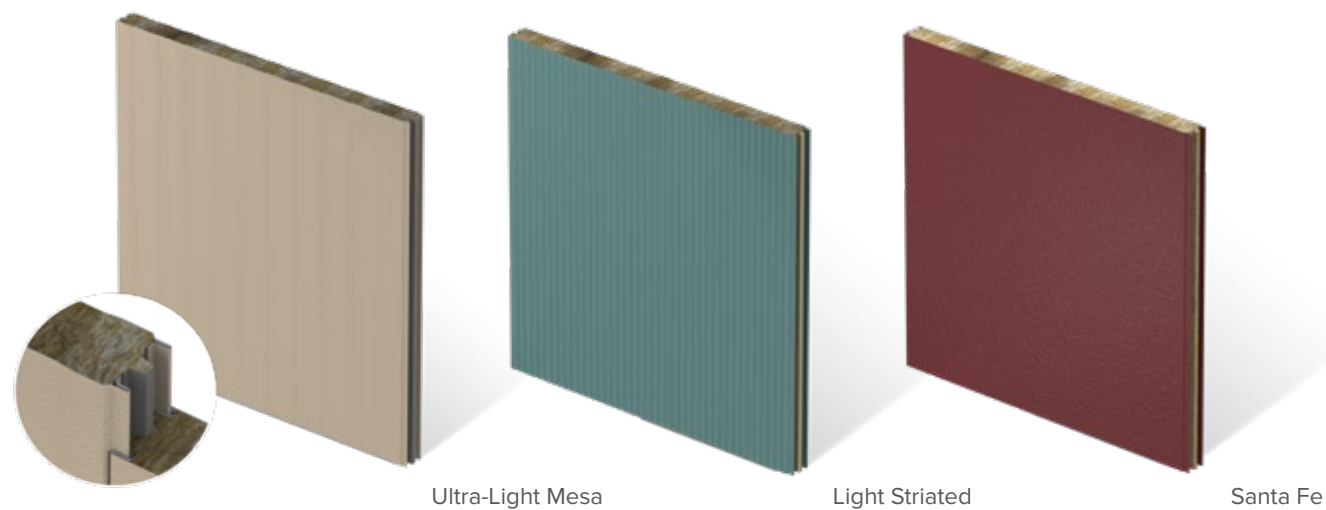
PANEL SPECIFICATIONS

Width: 36"
Thickness: 1 1/2", 2", 2 1/2", 3", 4", 5", 6"
Rib height not included in thickness

Length: NON-DIRECTIONAL EMBOSSED
8'-0" to 50'-0" Vertical
UNEMBOSSED
8'-0" to 50'-0" Vertical

Exterior Profile: 1/2" high major ribs at 12" on center, embossed or unembossed
Exterior Face: G-90 galvanized or AZ-50 aluminum-zinc coated steel in 26, 24 and 22 Ga.
Interior Profile: Mesa, nominal 1/8" deep, embossed
Interior Face: G-90 galvanized or AZ-50 aluminum-zinc coated steel in 26, 24 and 22 Ga.
Joint: Overlapping with a single tongue-and-groove
Fastening: Exposed through fasteners

^oContact Metl-Span for reveal options. | [•]Endfolds, factory pre-formed corners and trimless ends available. | ^{*}Available only from Nevada plant.
[±]Center-to-center corrugation spacing, may vary by manufacturing location. | ^{**}Not available in unembossed.
⁺ Not available as an exterior application. | Contact Metl-Span for custom length availability.



FIRE RESISTANCE

THERMSAFE® & THERMSAFE NON-EXPOSED FASTENER (NEF)

Achieves a one-, two- or three-hour fire resistance rating for walls and 1.5 hours for ceilings.



PANEL SPECIFICATIONS

Width: 42", 43" ~

Thickness: Nominal 3"†, 4", 5", 6", 7", 8"

Length: NON-DIRECTIONAL EMBOSSED
8'-0" to 40'-0"
variable by thickness; contact Metl-Span for
exact maximum length for each thickness

Exterior Profile: Ultra-Light Mesa, Santa Fe or Light
Striated, nominal 1/32" deep, embossed

Exterior Face: G-90 galvanized or AZ-50 aluminum-zinc
coated steel in 26 and 24 Ga.

Interior Profile: Ultra-Light Mesa, nominal 1/32" deep,
embossed

Interior Face: G-90 galvanized or AZ-50 aluminum-zinc
coated steel in 26 and 24 Ga.

Weight, 26 Ga. Faces: 3" is 3.94 PSF, 4" is 4.65 PSF, 5" is
5.49 PSF, 6" is 6.21 PSF, 7" is 6.92 PSF, 8" is 7.63 PSF

Joint: Exclusive LockGuard® side joint has a flush, double
tongue-and-groove connection of the metal faces with an
advanced integral spline to join the mineral wool core

Core: Non-combustible, rigid mineral wool lamellas.
Mineral wool fibers are oriented perpendicular to the
panel faces for maximum structural strength.

Thermal Values: K-Factor** @ 75° F (24° C) is 0.275

R-Value: The core insulating properties are 3.61 "R" per
inch

Fastening: Available with either through-fastening
across the width of the panel to the support framing or
non-exposed fastening (NEF) by securing through the
back of the panel for a flush visual appearance.

Consult fire-resistant listings for fastener types and
spacing. Fastening patterns may vary depending on
specific windload and fire-resistant requirements.

INTERIOR PARTITION

CF PARTITION



PANEL SPECIFICATIONS

Width: 44½"

Thickness: 2", 2½", 2¾", 3", 4", 5", 6"

Length: NON-DIRECTIONAL EMBOSSED
8'-0" to 52'-0" Vertical
UNEMBOSSED
8'-0" to 40'-0" Vertical

Exterior Profile: Mesa, nominal 1/8" deep, embossed or
Light Mesa, nominal 1/16" deep, embossed or unembossed

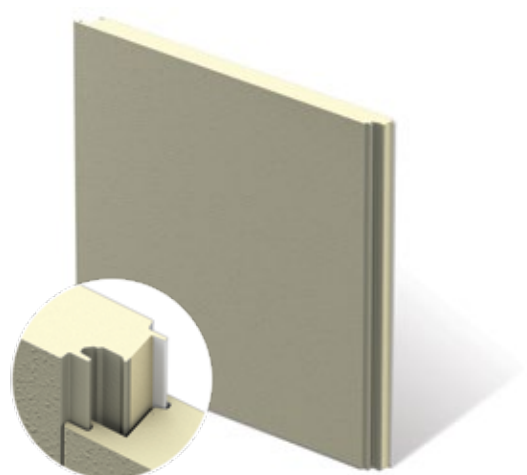
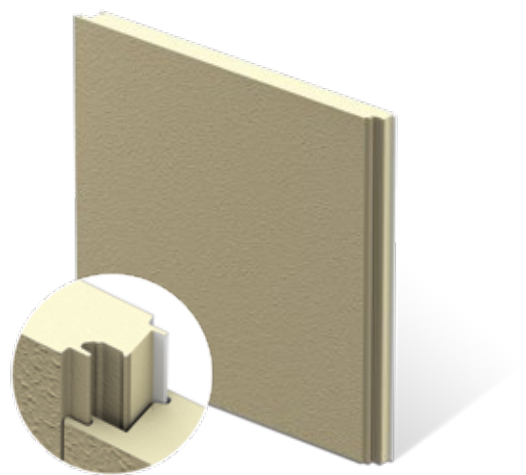
Exterior Face: G-90 galvanized or AZ-50 aluminum-zinc
coated steel in 26, 24 and 22 Ga.

Interior Profile: Mesa, nominal 1/8" deep, embossed or
Light Mesa, nominal 1/16" deep, embossed or unembossed

Interior Face: G-90 galvanized or AZ-50 aluminum-zinc
coated steel in 26, 24 and 22 Ga.

Joint: Offset double tongue-and-groove (the extended
metal shelf is eliminated on the Partition wall panel)

PROJECT: LOUDOUN WATER TREATMENT FACILITY
PANEL TYPE: 7.2 INSUL-RIB, CF ARCHITECTURAL
LOCATION: LEESBURG, VIRGINIA



TUFF COTE® WALL PANELS

CF TUFF WALL™ ◻ •



PANEL SPECIFICATIONS

Width: 36", 42"

Thickness: 2", 2 ½", 3", 4", 5"†, 6"†

Length: 8'-0" to 32'-0" Horizontal
8'-0" to 40'-0" Vertical

Exterior Profile: Factory-applied Tuff Cote® system textured finish similar to stucco and pre-cast like finish

Exterior Face: G-90 galvanized or AZ-50 aluminum-zinc coated steel in 24 and 22 Ga.

Interior Profile: Light Mesa, nominal 1/16" deep, embossed or unembossed

Interior Face: G-90 galvanized or AZ-50 aluminum-zinc coated steel in 26, 24 and 22 Ga.

Joint: Offset double tongue-and-groove with extended metal shelf for positive face fastening

Core: Foamed-in-place, Non-CFC & zero ODP Polyurethane, FM Approved Class 1 with no height restrictions

CF TUFF-CAST® ◻ •

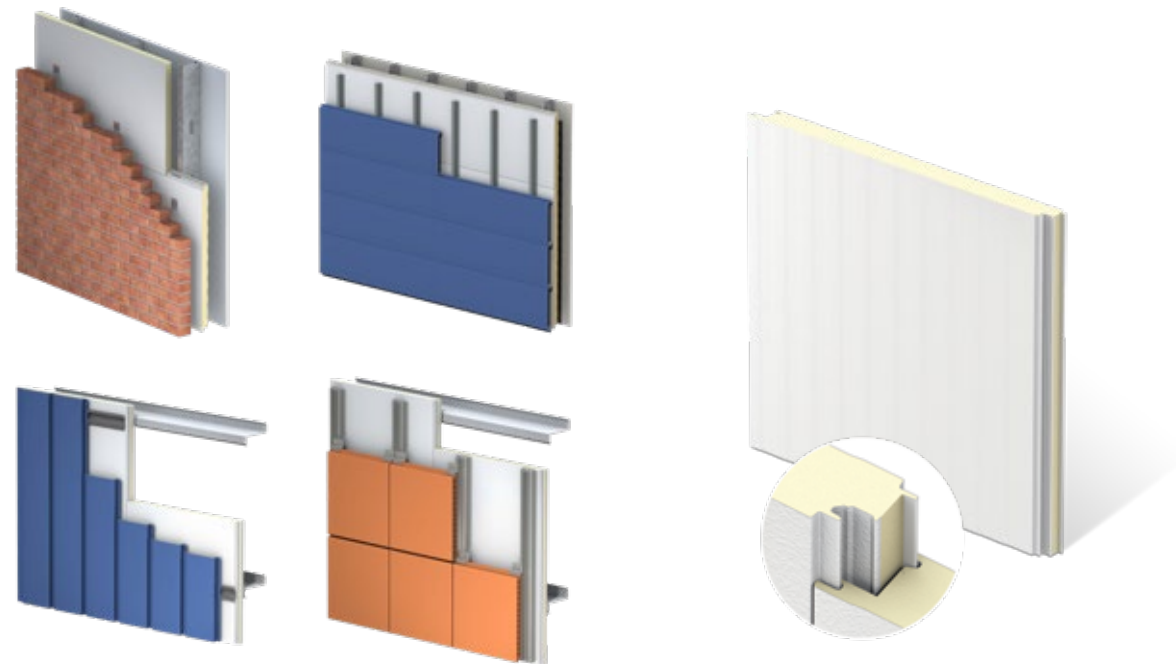


Exterior Texture: Tuff Cote® finish system—a hard aggregated fiber-reinforced polymer coating

Exterior Coatings: Hard aggregated fiber-reinforced polymer coating created with the factory-applied Tuff Cote® finish system. Tuff Cote® finish offers an extremely durable, impact and abrasion-resistant coating that can withstand severe weather conditions.

Fastenings: Fastener and clip concealed in the side joint

◻ Contact Metl-Span for reveal options. | • Endfolds, factory pre-formed corners and trimless ends available.
**K-Factor calculations: Btu in/ft²·hr. °F. | †Mesa 1/8" profile.



SINGLE-PANEL BARRIER WALL

HPCI BARRIER



PANEL SPECIFICATIONS

Width: 42"

Thickness: 2", 2 1/2", 3", 4", 5", 6"

Length: NON-DIRECTIONAL EMBOSSED
8'-0" to 32'-0" Horizontal
8'-0" to 52'-0" Vertical

Exterior Profile: Longitudinal ribs, spaced at nominal 4" on center, nominal 1/16" deep, embossed

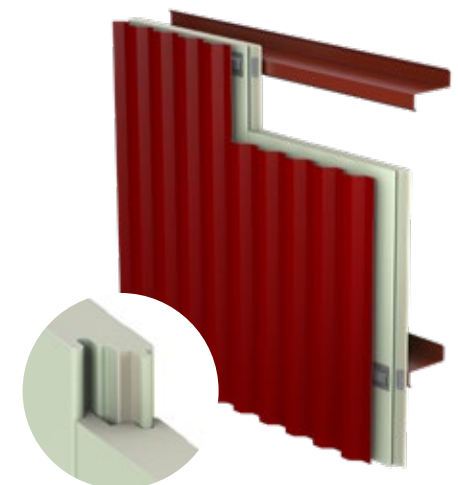
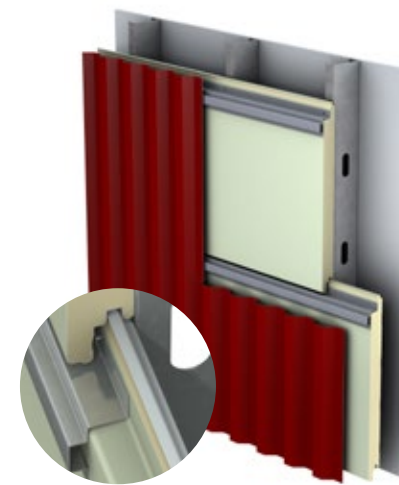
Exterior Face: G-90 galvanized or AZ-50 aluminum-zinc coated steel in min. 26 Ga.

Interior Profile: Light Mesa, nominal 1/16" deep, embossed or unembossed

Interior Face: G-90 galvanized or AZ-50 aluminum-zinc coated steel in min. 26 Ga.

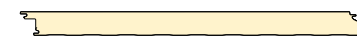
Joint: Offset double tongue-and-groove with extended metal shelf for positive face fastening

Core: Foamed-in-place, zero ozone-depleting polyurethane (zero ODP)



BW SYSTEMS

BW UNIVERSAL SYSTEM™



PANEL SPECIFICATIONS

Width: 32", 36"

Thickness: 2", 3"

Length: 12'-0" or 20'-0" Horizontal

Exterior Profile: No profile, unembossed

Exterior Face: AZ-50 aluminum-zinc coated steel in 29 Ga. with epoxy primer finish

Interior Profile: Shallow Planked, nominal 3/64" deep, unembossed

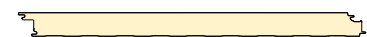
Interior Face: AZ-50 aluminum-zinc coated steel in 29 Ga. with epoxy primer finish

Joint: Tongue-and-groove with concealed face fastening

Core: Foamed-in-place polyisocyanurate

Span Capabilities: Up to 24" o.c.

BW STRETCH SYSTEM™



PANEL SPECIFICATIONS

Width: 30", 36"

Thickness: 2", 2 3/4", 4"

Length: 12'-0" or 20'-0" Vertical

Exterior Profile: No profile, unembossed

Exterior Face: G-90 galvanized aluminum-zinc coated steel in 22 Ga. with epoxy primer finish

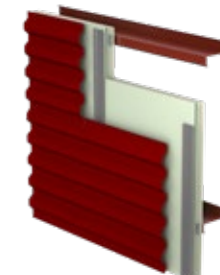
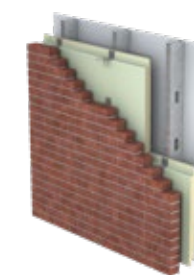
Interior Profile: Shallow Planked, nominal 3/64" deep, unembossed

Interior Face: G-90 galvanized aluminum-zinc coated steel in 26 Ga. with epoxy primer finish

Joint: Double tongue-and-groove

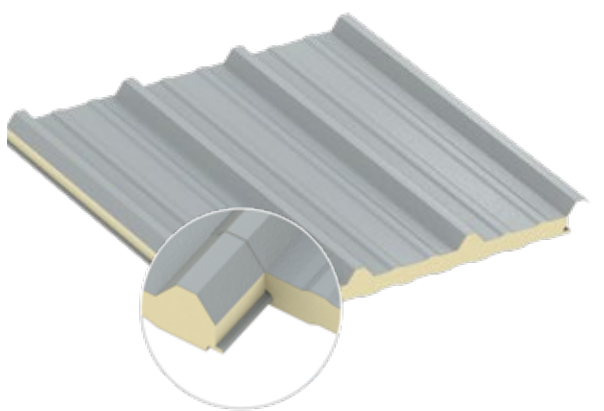
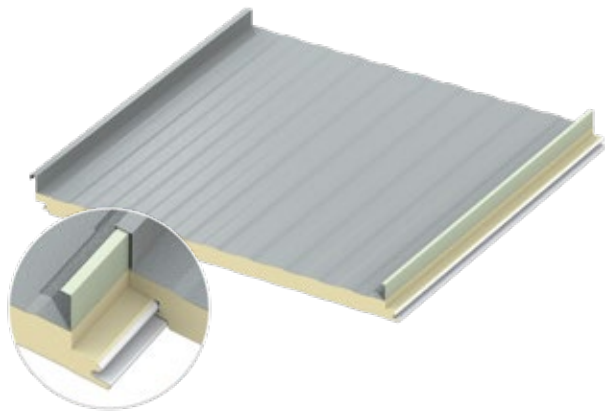
Core: Foamed-in-place polyisocyanurate

Span Capabilities: Greater than 24" o.c., up to 6'





PROJECT: OVERMOUNTAIN VINEYARD GUEST HOUSE
PANEL TYPE: MESA, LS-36
LOCATION: POLK COUNTY, NORTH CAROLINA



ROOF

CFR



PANEL SPECIFICATIONS

Width: 30"x, 36", 42"

Thickness: 2", 2½", 3", 4", 5", 6"

Length: NON-DIRECTIONAL EMBOSSED
9'-6" to 53'-0", contact Metl-Span for
custom availability.

Exterior Profile: 2" high standing seam with a Mesa
profile between the seams, embossed

Exterior Face: G-90 galvanized or AZ-50 aluminum-zinc
coated steel in 24 and 22 Ga.; or AZ-55 aluminum-zinc
coated steel with a clear acrylic coating in 24 Ga.

Interior Profile: Mesa, nominal ⅛" deep, embossed or
unembossed

Interior Face: G-90 galvanized or AZ-50 aluminum-zinc
coated steel in 26, 24 and 22 Ga.

Joint: Concealed clip mechanically seamed singlelock
standing seam at the exterior side joint. The interior
side joint is a single tongue-and-groove interlock.

Uplift Performance: UL 90 rated, FM Approvals
Standard 4471, and Florida Building Code approved.
Dade County NOA.

LS-36



PANEL SPECIFICATIONS

Width: 36"

Thickness: 1½", 2", 2½", 3", 4", 5", 6"
Rib height not included in thickness

Length: NON-DIRECTIONAL EMBOSSED
8'-0" to 50'-0" Vertical
UNEMBOSSED
8'-0" to 50'-0" Vertical

Exterior Profile: 1½" high major ribs at 12" on center,
embossed or unembossed

Exterior Face: G-90 galvanized or AZ-50 aluminum-zinc
coated steel in 26, 24 and 22 Ga.

Interior Profile: Mesa, nominal ⅛" deep, embossed

Interior Face: G-90 galvanized or AZ-50 aluminum-zinc
coated steel in 26, 24 and 22 Ga.

Joint: Overlapping with a single tongue-and-groove

Fastening: Exposed through fasteners

**K-Factor calculations: Btu in/ft2hr. °F. I x Available only from Texas plant. I Contact Metl-Span for custom length availability.

CASE STUDY

THE CANNON

The Cannon, a 120,000 square foot modern, flexible workspace, provides innovators with everything they need to establish a home base for their companies. Home to more than 500 of Greater Houston's most talented and accomplished entrepreneurs, creatives and small business owners, The Cannon includes 131 offices, 300 open and dedicated desks, a movie theater, game room, event space, full-service kitchen, a health and wellness room and a courtyard with outdoor seating. The facility is marketed as "a citywide ecosystem for Houston's entrepreneurs, small businesses, freelancers and creatives."

Insulated metal panels also helped achieve the desired appearance, inside and outside.

"We could have gone the conventional route, with insulation and drywall, but we really wanted to maintain some of the original look of the building," says Ken R. Harry, AIA, NCARB, LEED AP, Principal of Abel Design Group of Houston. "With the insulated metal panels, we were able to leave the interior beams and columns exposed. Plus, we got the levels of insulation that were required for the roof and walls. Right from the start, it seemed like the logical way to go."

CF42" insulated metal roofing panels, with 4 inches of urethane insulation, in the color of Burnished Slate. The exterior panels were 24-gauge Galvalume. The wall panels were two profiles and colors; 37,858 square feet of CF7.2 Insul-Rib in Burnished Slate and 9,437 square feet of CF Architectural 36" in Chestnut, both with 22-gauge Galvalume exterior panels. All interior panels were 24-gauge Galvalume in Igloo White.

Baldwin says FSR needed 180 working days to install the IMPs; but ran into weather delays during the rainy Houston summer of 2019, which pushed back the original completion date approximately 90 days. The project was completed in August 2019.

"We were basically working in a mudhole all summer," Baldwin says. "There were a lot of days we couldn't get anything done. Our equipment was buried in the mud."

The Cannon is the largest IMP project completed by FSR Services. Baldwin says his team, led by owner Steve Seibert and project manager Tommy Pavlicek, did its best to keep the project moving along. Seibert says it was a challenging project, retrofitting an existing structure, but the end product turned out amazing.

"Insulated metal panels are easy and quick to install," Baldwin says. "The larger panels cover a lot of space in a single pass. It's a lot easier than making several passes for the exterior system, interior system and insulation."

FEATURED PRODUCT

CF7.2 Insul-Rib

The original building was stripped down to the steel structure. Some of the 70-year-old purlins and cross members had to be replaced. "We had to verify every dimension of all the beams so shop drawings could be accurate," says David Baldwin, Sales Manager at FSR Services of Houston. "The beams were painted, and the insulated metal panels were installed. The bright blue beams against the white interior finish of the insulated metal panel is a very modern and clean look."

The project called for approximately 67,775 square feet of Metl-Span's



METL-VISION®

Metl-Span has developed the Metl-Vision® window system to further complement the exceptional architectural aesthetics and function of Metl-Span's horizontal wall panels. Metl-Vision® is the first window system engineered to integrate fully with Architectural 2" and 3" horizontal wall panels. The Metl-Vision® flush frame eliminates interface problems commonly encountered with standard windows, and minimizes sight lines to enhance finished assembly appearance. The system offers great flexibility in window size, multiple lite configurations and window-finish options.

PANEL SPECIFICATIONS

Window Height: Available in increments matching standard wall panel widths of 24", 30" and 36". Custom widths and corresponding heights are available between 12" and 36".

Window Width: Virtually unlimited widths are obtainable using spliced head and sill members in combination with intermediate vertical muntins. Window unit jambs can be located to match with vertical wall panel joints or located away.

Glazing Material Thickness: Standard 1"

Window Projection: The frame is 4" deep and designed to fit flush with exterior panels

FINISHES

Anodized: Clear, Dark Bronze, Black

2-Coat Painted: Custom color consisting of fluoropolymer coatings

3-Coat Painted: Custom color consisting of fluoropolymer coatings and clear coat

Mill Finish: Bare aluminum



PROJECT: LAND REMEDIATION INC.
PANEL TYPE: LIGHT MESA, SANTA FE
LOCATION: WATERFORD, NEW YORK

TESTING & CERTIFICATIONS



FM APPROVAL

Metl-Span products carry a standard FM Approval Class 1 certification. The FM Approval certification mark verifies products and services will meet stated conditions of performance, safety and quality useful to the ends of property conservation.

Approval criteria for Class 1 observes test sample production, performance requirements, marking requirements, examination of manufacturing facilities, audit of quality assurance procedures and a follow-up program.

This FM Approval Class 1 rating ensures your investment is a quality product that consistently performs to the standards specified.

THIRD-PARTY CERTIFICATIONS & LISTINGS FOR CF FOAM PANELS

The panels are certified and listed by third-party agencies and tested in accordance with ASTM E84, ASTM E108, CAN/ULC S101, S102, S107, S126, S134, S138, NFPA 259, NFPA 285 and NFPA 286.

FIRE-RESISTANCE TESTS (THERMALSAFE ONLY)

FM Approval Standard 4880 internal wall and ceiling panels, ASTM E119, CAN/ULC S101, UL 263

The ThermalSafe product offers one-, two- and three-hour fire resistance for non-load-bearing walls and a 90-minute fire-resistance rating for a non-load-bearing ceiling.

- 4" thickness offers one-hour fire resistance wall listing at UL and Intertek
- 6" thickness offers two-hour fire resistance wall listing and a 90-minute ceiling listing at Intertek
- 7" thickness offers two-hour fire resistance wall listing at UL
- 8" thickness offers three-hour fire resistance wall listing at UL and Intertek

MIAMI DADE COUNTY NOAS

CF wall panels installed vertically or horizontally and CFR roof panels are approved to be installed in the county subject to the conditions of the published notices of acceptance.

STATE OF FLORIDA

Metl-Span CF Series and ThermalSafe panels all have State of Florida product approval.

CITY OF LOS ANGELES RESEARCH REPORT

ICC Evaluation Service Report ESR - 2218, applicable to CF Flute, CF Mesa, and CF Partition Panels.

ENVIRONMENTALLY CONNECTED

Given today's emphasis on performance-driven building design and construction, Metl-Span's products offer the best solution to help optimize building efficiency for architects, contractors and owners.

Metl-Span, part of the Nucor Company, leads the industry in the development of energy-efficient and cost-effective insulated metal panel systems, through UL-certified and ISO-compliant products. Our company has been dedicated to a cleaner, safer environment since our origination in 1968. As evidence of our leadership in this role, we offer an Environmental Product Declaration (EPD), which provides a detailed analysis of our products' environmental manufacturing footprint, based on an ISO-compliant Life Cycle Assessment (LCA).

Metl-Span's LCA measures the impact of our products on the environment during all phases of their life, from supply chain through the manufacturing process to product use and end of life. ISO LCA standards are applied to accurately report the products' impact on the environment.

See metlspan.com for published EPD and LCA.

DESIGN OPTIONS

APPLICATION

Metl-Span insulated metal panels provide you design flexibility with horizontal and vertical applications. The options to create building curb appeal include panel orientation coupled with a variety of finishes, textures and colors.

COLORS

Insulated metal panels come in a variety of standard colors to meet solar reflective requirements. For a complete list of our standard colors, please review our color chart. We also do custom colors and color matching. For more information regarding specific colors, please contact a local representative.

FINISHES

To ensure a lasting, quality appearance, the exterior face sheet of all Metl-Span insulated metal wall, CFR and ThermalSafe® mineral wool panels are treated with a base primer, followed by a premium, full-strength 70% fluoropolymer coating as standard. A siliconized polyester coating is available in a limited palette of standard colors for projects where economy is the primary consideration. A wide variety of finishes are available. For more information, see color chart or visit metlspan.com.

DESIGN OPTIONS

- IMPs and Masonry
- Mosaic Patterns
- Color and Profile Variations
- Accent Bands
- Flashings and Extrusions
- Interior Exposed
- Interior Finished

For more information, contact your local sales representative.

WARRANTY

Metl-Span insulated metal wall, CFR and ThermalSafe® mineral wool panels are guaranteed to be free from defects in material and workmanship for a period of two years from the date of substantial completion. Ensuring watertightness and/or vaportightness is a function of the installer and is not covered by the warranty from Metl-Span. Complete standard limited warranty information is available upon request.

IN-HOUSE PRE/POST SALES SERVICES OFFERED

- Drafting/Technical Services
- Certified Installer Training
- On-Site Field Training
- Weathertight Warranties



PROJECT: SKS BOTTLE & PACKAGING
PANEL TYPE: LIGHT MESA, SANTA FE
LOCATION: SARATOGA SPRINGS, NEW YORK

SINGLE SKIN PRODUCTS - CONCEALED FASTENER

PRODUCT SPECIFICATIONS

CONCEALED FASTENING SYSTEMS

DESIGNER™ SERIES 16" FLUTED WALL PANEL

PANEL SPECIFICATIONS

Profile: 4" wide Flutes, nominal 3/8" deep with a 13/4" deep leg

Width: 16"

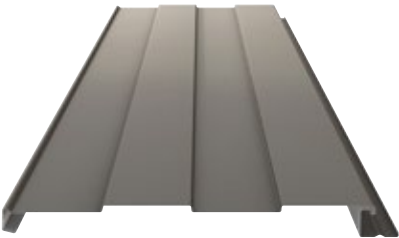
Length: 5'-0" to 35'-0"

Exterior Face: Unembossed as standard G-90 galvanized or AZ-50 aluminum-zinc coated steel in 24 and 22 Ga.

Standard Exterior: Full-strength 70% fluoropolymer or siliconized polyester coating

Fastening: Concealed fastening system

Colors: Standard 1, Standard II, Premium I and Premium II color options



FW-120

PANEL SPECIFICATIONS

Profile: Flat with options of one bead at 6" on center or two beads, 4" apart

Width: 12"

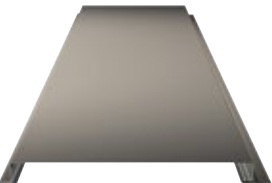
Length: 5'-0" to 30'-0"

Exterior Face: Unembossed as standard G-90 galvanized or AZ-50 aluminum-zinc coated steel in 24, 22 and 20 Ga.

Standard Exterior: Full-strength 70% fluoropolymer coating

Fastening: Concealed fastening system

Colors: Standard 1, Standard II, Premium I and Premium II color options



NUWALL® METAL PANEL

PANEL SPECIFICATIONS

Profile: 2½" deep panel with ½" deep fluting

Width: 12"

Length: 5'-0" to 40'-0"

Exterior Face: Unembossed as standard G-90 galvanized or AZ-50 aluminum-zinc coated steel in 24 and 22 Ga.

Standard Exterior: Full-strength 70% fluoropolymer coating or siliconized polyester coating

Fastening: Concealed fastening system

Colors: Standard 1, Standard II, Premium I and Premium II color options



ARTISAN® SERIES METAL SOFFIT PANEL

PANEL SPECIFICATIONS

Profile: Flat panel

Width: 12"

Length: 12" panel: 4'-0"; inquire about longer lengths

Exterior Face: Unembossed as standard G-90 galvanized or AZ-50 aluminum-zinc coated steel in 26, 24 and 22 Ga.

Standard Exterior: Full-strength 70% fluoropolymer coating or siliconized polyester coating

Fastening: Concealed fastening system



SHADOWRIB® METAL PANEL

PANEL SPECIFICATIONS

Profile: 3" deep panel with 1½" deep by 5¼" wide fluting

Width: 16"

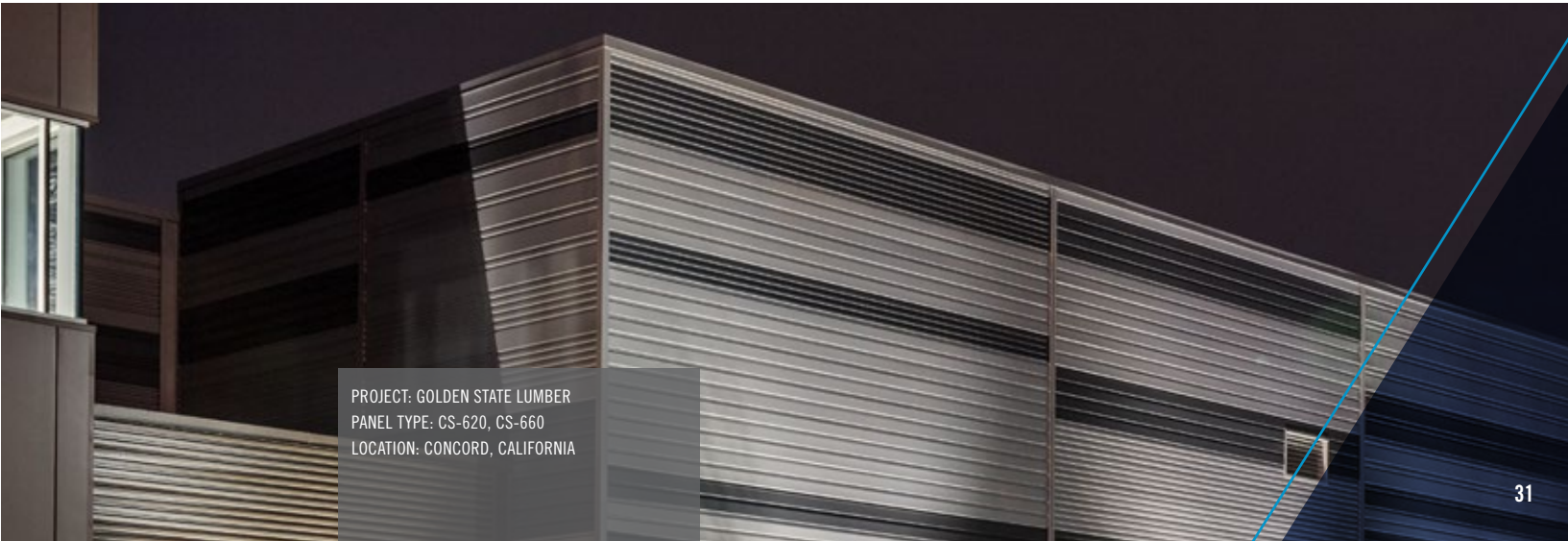
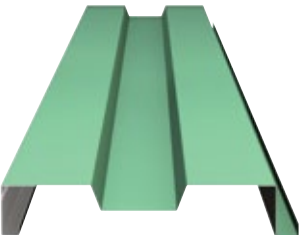
Length: 5'-0" to 40'-0"

Exterior Face: Unembossed as standard G-90 galvanized or AZ-50 aluminum-zinc coated steel in 24 and 22 Ga.

Standard Exterior: Full-strength 70% fluoropolymer coating or siliconized polyester coating

Fastening: Concealed fastening system

Colors: Standard 1, Standard II, Premium I and Premium II color options



PROJECT: GOLDEN STATE LUMBER
PANEL TYPE: CS-620, CS-660
LOCATION: CONCORD, CALIFORNIA



PROJECT: BI-RITE FOOD DISTRIBUTION SERVICE
PANEL TYPE: CS-200, CS-260, CS-620, CS-660
LOCATION: BRISBANE, CALIFORNIA

SINGLE SKIN PRODUCTS - CONCEALED FASTENER

PRODUCT SPECIFICATIONS

CONCEALED FASTENING SYSTEMS

CONCEPT SERIES CS-200

PANEL SPECIFICATIONS

Profile: 7/8" rib height on center with staggered patterns

Width: 12"

Height: 7/8"

Length: 5'-0" to 30'-0"

Exterior Face: G90 galvanized steel 22, 20, and 18 Ga. in unembossed or 22 and 20 Ga. in non-directional embossed

Joint: Interlocking

Fastening: Concealed fastening system

Colors: Standard 1, Standard II, Premium I and Premium II color options



CONCEPT SERIES CS-260

PANEL SPECIFICATIONS

Profile: 7/8" rib height on center with staggered patterns

Width: 12"

Height: 7/8"

Length: 5'-0" to 30'-0"

Exterior Face: G90 galvanized steel 24, 22, 20, and 18 Ga. in unembossed or non-directional embossed (18 Ga. not available).

Joint: Interlocking

Fastening: Concealed fastening system

Colors: Standard 1, Standard II, Premium I and Premium II color options



CONCEPT SERIES CS-620

PANEL SPECIFICATIONS

Profile: 7/8" rib height on center with staggered patterns

Width: 16"

Height: 7/8"

Length: 5'-0" to 30'-0"

Exterior Face: G90 galvanized steel 22, 20, and 18 Ga. in unembossed or 22 and 20 Ga. in non-directional embossed

Joint: Interlocking

Fastening: Concealed fastening system

Colors: Standard 1, Standard II, Premium I and Premium II color options



SINGLE SKIN PRODUCTS - CONCEALED FASTENER

PRODUCT SPECIFICATIONS

CONCEALED FASTENING SYSTEMS

CONCEPT SERIES CS-660

PANEL SPECIFICATIONS

Profile: ⅞" rib height on center with staggered patterns

Width: 16"

Height: ⅞"

Length: 5'-0" to 30'-0"

Exterior Face: G90 galvanized steel 24, 22, 20, and 18 Ga. in unembossed or non-directional embossed (18 Ga. not available)

Joint: Interlocking

Fastening: Concealed fastening system

Colors: Standard 1, Standard II, Premium I and Premium II color options



IW SERIES IW-10A*

PANEL SPECIFICATIONS

Profile: 1 ½" rib height on center with staggered patterns

Width: 12"

Height: 1 ½"

Length: 5'-0" to 25'-0"

Exterior Face: G90 galvanized steel 22, and 20 Ga. in non-directional embossed or 22, 20, and 18 Ga. in unembossed

Joint: Interlocking

Fastening: Concealed fastening system

Colors: Standard 1, Standard II, Premium I and Premium II color options



IW SERIES IW-13A

PANEL SPECIFICATIONS

Profile: 1 ½" rib height on center with staggered patterns

Width: 12"

Height: 1 ½"

Length: 5'-0" to 25'-0"

Exterior Face: G90 galvanized steel 22, and 20 Ga. in non-directional embossed or 22, 20, and 18 Ga. in unembossed

Joint: Interlocking

Fastening: Concealed fastening system

Colors: Standard 1, Standard II, Premium I and Premium II color options



IW SERIES IW-20A

PANEL SPECIFICATIONS

Profile: 1 ½" rib height on center with staggered patterns

Width: 12"

Height: 1 ½"

Length: 5'-0" to 25'-0"

Exterior Face: G90 galvanized steel 22, and 20 Ga. in non-directional embossed or 22, 20, and 18 Ga. in unembossed

Joint: Interlocking

Fastening: Concealed fastening system

Colors: Standard 1, Standard II, Premium I and Premium II color options



IW SERIES IW-40A*

PANEL SPECIFICATIONS

Profile: 1 ½" rib height on center with staggered patterns

Width: 12"

Height: 1 ½"

Length: 5'-0" to 25'-0"

Exterior Face: G90 galvanized steel 22, and 20 Ga. in non-directional embossed or 22, 20, and 18 Ga. in unembossed

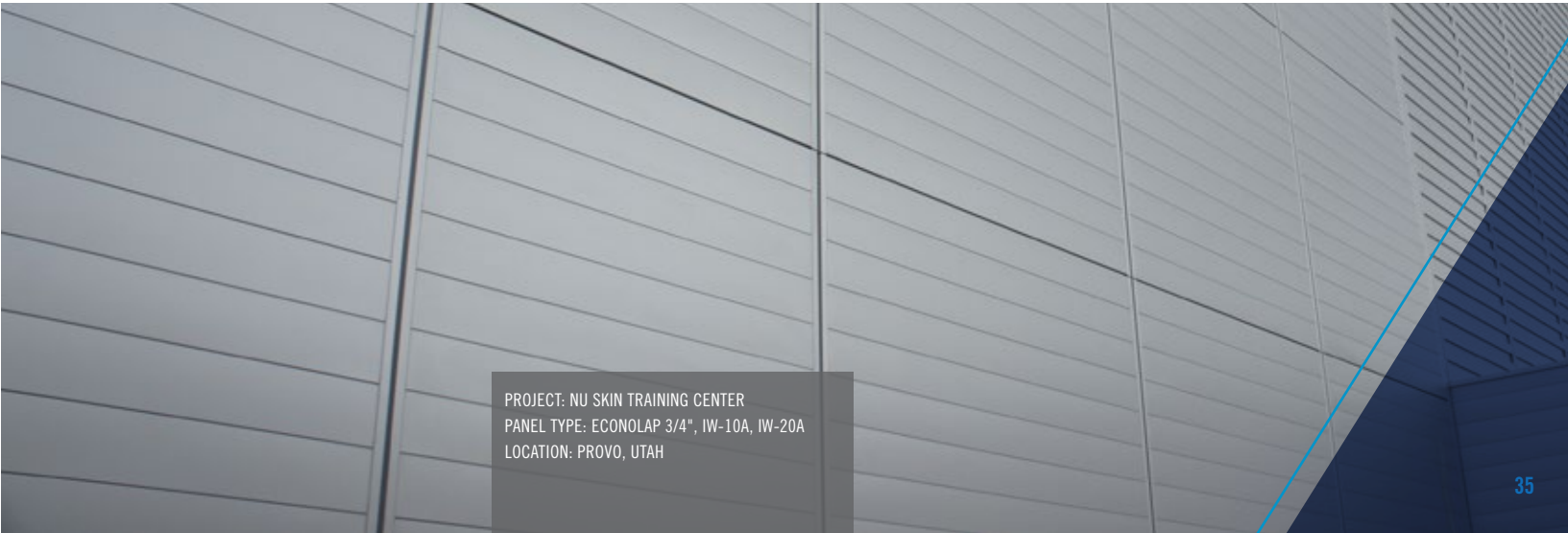
Joint: Interlocking

Fastening: Concealed fastening system

Colors: Standard 1, Standard II, Premium I and Premium II color options



*Oil canning" is an inherent part of light-gauge cold-formed metal products, particularly those with broad flat areas. Metl-Span takes every precaution, as defined by MCA, to minimize the effects of oil canning. Lack of flatness or waviness due to oil canning is not sufficient cause for rejection of material.



PROJECT: NU SKIN TRAINING CENTER
PANEL TYPE: ECONOLAP 3/4", IW-10A, IW-20A
LOCATION: PROVO, UTAH

SINGLE SKIN PRODUCTS - EXPOSED FASTENER

PRODUCT SPECIFICATIONS

EXPOSED FASTENING SYSTEMS

7.2 METAL WALL PANEL

PANEL SPECIFICATIONS

Profile: Traditional 1½" high-rib height at 7.2" on center
Width: 36"
Length: 5'-0" to 50'-0"
Exterior Face: Unembossed as standard G-90 galvanized or AZ-50 aluminum-zinc coated steel in 26, 24 and 22 Ga.

Standard Exterior: Full-strength 70% fluoropolymer coating or siliconized polyester coating
Fastening: Exposed Through Fasteners
Colors: Standard 1, Standard II, Premium I and Premium II color options



PBR METAL WALL PANEL

PANEL SPECIFICATIONS

Profile: 1¼" rib height at 12" on center
Width: 36"
Length: 5'-0" to 50'-0"
Exterior Face: Unembossed as standard G-90 galvanized or AZ-50 aluminum-zinc coated steel in 26, 24 and 22 Ga.

Standard Exterior: Full-strength 70% fluoropolymer coating or siliconized polyester coating
Fastening: Exposed Through Fasteners
Colors: Standard 1, Standard II, Premium I and Premium II color options



PBU METAL WALL PANEL

PANEL SPECIFICATIONS

Profile: ¾" rib height at 6" on center
Width: 36"
Length: 5'-0" to 50'-0"
Exterior Face: Unembossed as standard G-90 galvanized or AZ-50 aluminum-zinc coated steel in 26, 24 and 22 Ga.

Standard Exterior: Full-strength 70% fluoropolymer coating or siliconized polyester coating
Fastening: Exposed Through Fasteners
Colors: Standard 1, Standard II, Premium I and Premium II color options



PBC METAL WALL PANEL

PANEL SPECIFICATIONS

Profile: ⅞" rib height at 2 ⅔" on center
Width: 32"
Length: 5'-0" to 50'-0"
Exterior Face: Unembossed as standard G-90 galvanized or AZ-50 aluminum-zinc coated steel in 26, 24 and 22 Ga.

Standard Exterior: Full-strength 70% fluoropolymer coating or siliconized polyester coating
Fastening: Exposed Through Fasteners
Colors: Standard 1, Standard II, Premium I and Premium II color options



PBD METAL WALL PANEL

PANEL SPECIFICATIONS

Profile: ⅝" rib height at 2 ⅔" on center
Width: 32"
Length: 5'-0" to 50'-0"
Exterior Face: Unembossed as standard G-90 galvanized or AZ-50 aluminum-zinc coated steel in 26, 24 and 22 Ga.

Standard Exterior: Full-strength 70% fluoropolymer coating or siliconized polyester coating
Fastening: Exposed Through Fasteners
Colors: Standard 1, Standard II, Premium I and Premium II color options



SINGLE SKIN PRODUCTS - EXPOSED FASTENER

PRODUCT SPECIFICATIONS

EXPOSED FASTENING SYSTEMS

ECONOLAP ¾"

PANEL SPECIFICATIONS

Profile: ¾" rib height on center with staggered patterns

Width: 34 ⅔"

Height: ¾"

Length: 5'-0" to 40'-0"

Exterior Face: G90 galvanized steel 24, 22, 20, and 18 Ga. in unembossed or non-directional embossed (18 Ga. not available)

Joint: Overlapping

Fastening: Exposed Through Fasteners

Colors: Standard 1, Standard II, Premium I and Premium II color options



BR5-36

PANEL SPECIFICATIONS

Profile: 1 ½" rib height on center with staggered patterns

Width: 36"

Height: 1 ½"

Length: 5'-0" to 40'-0"

Exterior Face: G90 galvanized steel 24, 22, 20, and 18 Ga. in unembossed or non-directional embossed (18 Ga. not available)

Joint: Overlapping

Fastening: Exposed Through Fasteners

Colors: Standard 1, Standard II, Premium I and Premium II color options



MR3-36

PANEL SPECIFICATIONS

Profile: 3" rib height on center with staggered patterns

Width: 36"

Height: 3"

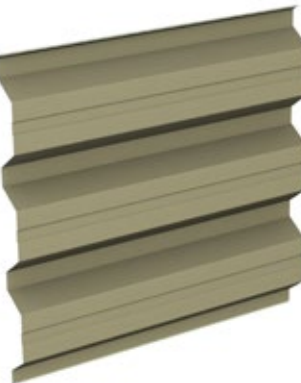
Length: 5'-0" to 40'-0"

Exterior Face: G90 galvanized steel 24, 22, 20, and 18 Ga. in unembossed or non-directional embossed (18 Ga. not available)

Joint: Overlapping

Fastening: Exposed Through Fasteners

Colors: Standard 1, Standard II, Premium I and Premium II color options



TR4-36

PANEL SPECIFICATIONS

Profile: 1 ½" rib height on center with staggered patterns

Width: 36"

Height: 1 ½"

Length: 5'-0" to 40'-0"

Exterior Face: G90 galvanized steel 24, 22, 20, and 18 Ga. in unembossed or non-directional embossed (18 Ga. not available)

Joint: Overlapping

Fastening: Exposed Through Fasteners

Colors: Standard 1, Standard II, Premium I and Premium II color options



STYLE-RIB

PANEL SPECIFICATIONS

Profile: Nominal 1 ½" rib height on center with staggered patterns

Width: 36"

Height: Nominal 1 ½"

Length: 5'-0" to 40'-0"

Exterior Face: G90 galvanized steel 24, 22, 20, and 18 Ga. in unembossed or non-directional embossed (18 Ga. not available)

Joint: Overlapping

Fastening: Exposed Through Fasteners

Colors: Standard 1, Standard II, Premium I and Premium II color options



SUPER-RIB

PANEL SPECIFICATIONS

Profile: 4" rib height on center with staggered patterns

Width: 24"

Height: 4"

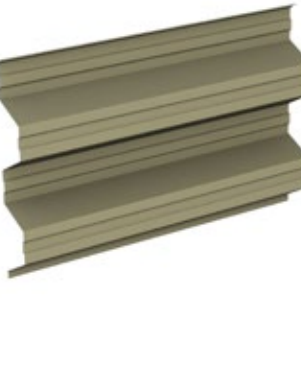
Length: 5'-0" to 40'-0"

Exterior Face: G90 galvanized steel 22, 20, and 18 Ga. in unembossed or 22 and 20 Ga. in non-directional embossed

Joint: Overlapping

Fastening: Exposed Through Fasteners

Colors: Standard 1, Standard II, Premium I and Premium II color options



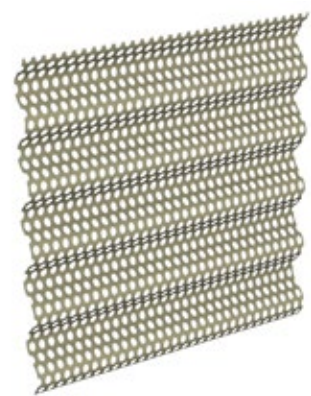
SINGLE SKIN PRODUCTS - EXPOSED FASTENER

PRODUCT SPECIFICATIONS

PERFORATED SCREENWALL SYSTEMS

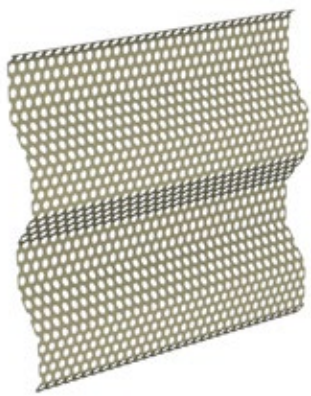
ECOSCREEN ECONOLAP 3/4"

PANEL SPECIFICATIONS	
Width: 34 2/5"	Joint: Overlapping
Height: 3/4"	Fastening: Exposed Through Fasteners
Length: 5'-0" to 30'-0" (Stainless Steel) or 5'-0" to 20'-0" (Aluminum)	Colors: Stainless Steel: 2B, Aluminum: Standard I, Standard II, Premium I and Premium II color options*
Exterior Profile: 3/4" rib height on center with reversed or staggered pattern unembossed	
Exterior Face: Unembossed Stainless Steel (304) in 20 Ga. Or Aluminum (3003-H14) in 0.040"	



ECOSCREEN STYLE-RIB

PANEL SPECIFICATIONS	
Width: 36"	Joint: Overlapping
Height: 1 1/2"	Fastening: Exposed Through Fasteners
Length: 5'-0" to 30'-0" (Stainless Steel) or 5'-0" to 20'-0" (Aluminum)	Colors: Stainless Steel: 2B, Aluminum: Standard I, Standard II, Premium I and Premium II color options*
Exterior Profile: 1 1/2" rib height on center with reversed or staggered pattern unembossed	
Exterior Face: Unembossed Stainless Steel (304) in 20 Ga. Or Aluminum (3003-H14) in 0.040"	



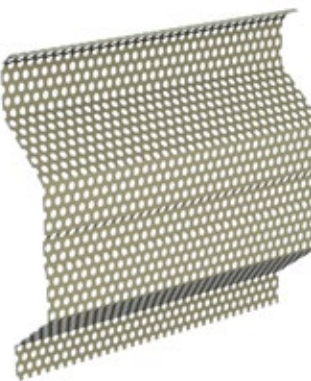
ECOSCREEN BR5-36

PANEL SPECIFICATIONS	
Width: 36"	Joint: Overlapping
Height: 1 1/2"	Fastening: Exposed Through Fasteners
Length: 5'-0" to 30'-0" (Stainless Steel) or 5'-0" to 20'-0" (Aluminum)	Colors: Stainless Steel: 2B, Aluminum: Standard I, Standard II, Premium I and Premium II color options*
Exterior Profile: 1 1/2" rib height on center with reversed or staggered pattern unembossed	
Exterior Face: Unembossed Stainless Steel (304) in 20 Ga. Or Aluminum (3003-H14) in 0.040"	



ECOSCREEN MR3-36

PANEL SPECIFICATIONS	
Width: 36"	Joint: Overlapping
Height: 3"	Fastening: Exposed Through Fasteners
Length: 5'-0" to 30'-0" (Stainless Steel) or 5'-0" to 20'-0" (Aluminum)	Colors: Stainless Steel: 2B, Aluminum: Standard I, Standard II, Premium I and Premium II color options*
Exterior Profile: 3" rib height on center with reversed or staggered pattern unembossed	
Exterior Face: Unembossed Stainless Steel (304) in 20 Ga. Or Aluminum (3003-H14) in 0.040"	



PERFORATION PATTERN OPTIONS

OPEN / FREE AREA PERCENTAGE	PATTERN	DIAMETER	SPACING
10%	Reverse	1/8"	3/8"
23%	Reverse	1/8"	1/4"
23%	Reverse	1/4"	1/2"
30%	Staggered	1/8"	7/32"
33%	Staggered	3/16"	5/16"
40°	Staggered	1/8"	3/16"
40%	Staggered	3/8"	9/16"

* Pre-painted coils. No finish warranty available.
° Pattern is not available in stainless steel for Style-Rib, BR5-36 or MR3-36





Metl-Span: All-In-One Performance
1720 Lakepointe Drive, Suite 101, Lewisville, Texas 75057
(p) 877.585.9969 | metlspan.com

© Metl-Span 2022, a NUCOR® company. All Rights Reserved. Printed in the U.S.A.
SKU #: 0307209991198 Revised NJ/10_22